

WAAS CH 42524 W10A	APP CRS 096°	Rwy Idg TDZE Apt Elev	3013 237 237
--	------------------------	-----------------------------	---

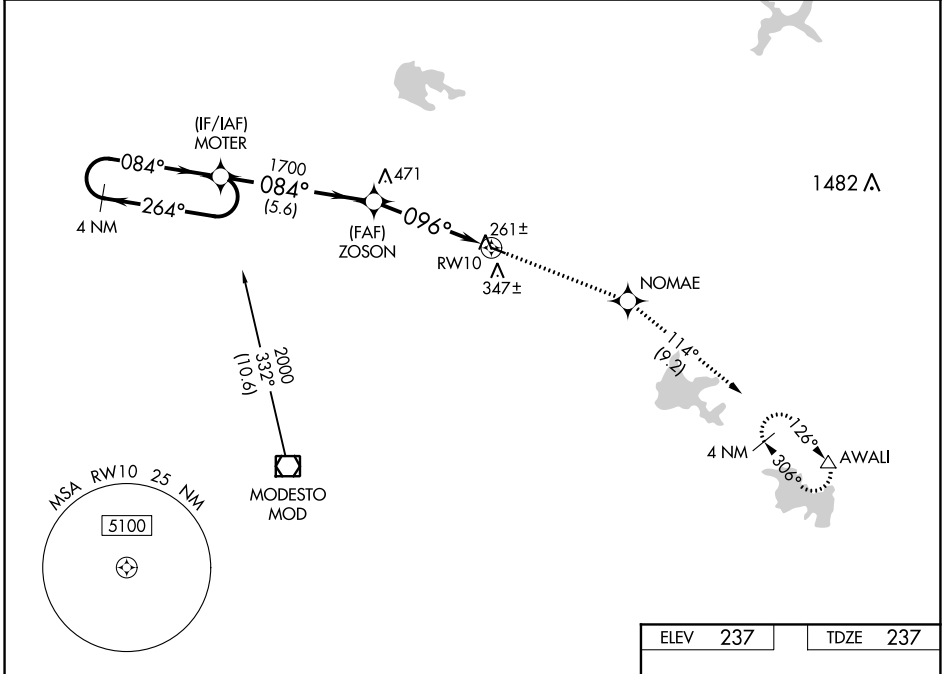
RNAV (GPS) RWY 10

OAKDALE (O27)

Baro-VNAV NA. DME/DME RNP-0.3 NA.
NA Use Modesto altimeter setting; when not received, use Stockton altimeter setting and increase all DA 36 feet and all MDA 40 feet; increase LPV and LNAV/VNAV all Cats and LNAV Cat C visibility 1/8 SM.

MISSED APPROACH: Climb to 4000 direct NOMAE and on track 114° to AWALI and hold, continue climb-in-hold to 4000.

MOD ASOS 127.7	NORCAL APP CON 125.1 363.2	UNICOM 122.8 (CTAF)
--------------------------	--------------------------------------	-------------------------------



SW-2, 28 JAN 2021 to 25 FEB 2021

SW-2, 28 JAN 2021 to 25 FEB 2021

VGSi and RNAV glidepath not coincident (VGSi Angle 2.50/TCH 22).		4000	NOMAE	tr 114°	AWALI
4 NM Holding Pattern		MOTER	ZOSON	RWY 10	AWALI
2000 ← 264°		← 084°	084°	1700	096°
GP 3.00°		5.6 NM		4.5 NM	
TCH 40		0.4% UP		3013 X.75	
CATEGORY	A	B	C	D	
LPV DA	531-1 294 (300-1)			NA	
LNAV/VNAV DA	555-1 1/8 318 (400-1 1/8)			NA	
LNAV MDA	760-1	523 (600-1)	760-1 1/2 523 (600-1 1/2)	NA	
CIRCLING	760-1 523 (600-1)	820-1 583 (600-1)	920-2 683 (700-2)	NA	REIL Rwy 10 and 28 MIRL Rwy 10-28