

SOUTHLAND THREE DEPARTURE

AL-410 (FAA)

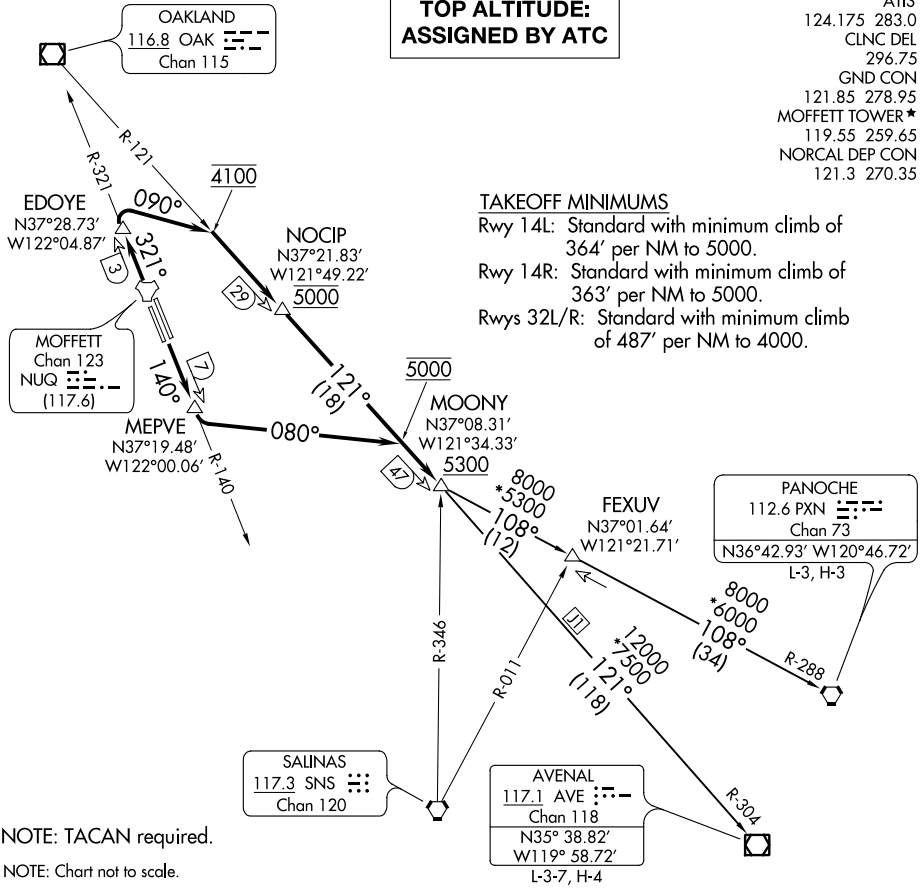
MOFFETT FEDERAL AFLD (NUQ)
MOUNTAIN VIEW, CALIFORNIA

**TOP ALTITUDE:
ASSIGNED BY ATC**

- ATIS 124.175 283.0
- CLNC DEL 296.75
- GND CON 121.85 278.95
- MOFFETT TOWER * 119.55 259.65
- NORCAL DEP CON 121.3 270.35

TAKEOFF MINIMUMS

- Rwy 14L: Standard with minimum climb of 364' per NM to 5000.
- Rwy 14R: Standard with minimum climb of 363' per NM to 5000.
- Rwys 32L/R: Standard with minimum climb of 487' per NM to 4000.



SW-2, 21 MAY 2020 to 18 JUN 2020

SW-2, 21 MAY 2020 to 18 JUN 2020

NOTE: TACAN required.
NOTE: Chart not to scale.

DEPARTURE ROUTE DESCRIPTION

TAKEOFF RUNWAYS 14L/R: Climb on NUQ R-140 to MEPVE/NUQ 7 DME, then climbing left turn on heading 080° to intercept OAK R-121 at 5000, then on OAK R-121 to cross MOONY INT at or above 5300, thence . . .

TAKEOFF RUNWAYS 32L/R: Climb on NUQ R-321 to EDOYE/NUQ 3 DME, then climbing right turn on heading 090° to intercept OAK R-121 at 4100, then on OAK R-121 to cross NOCIP/OAK 29 DME at 5000, then on OAK R-121 to cross MOONY INT at or above 5300, thence . . .

. . . on (transition), maintain ATC assigned altitude.

AVENAL TRANSITION (SOLN3.AVE): From over MOONY INT on OAK R-121 and AVE R-304 to AVE VOR/DME.

PANOCHE TRANSITION (SOLN3.PXN): From over MOONY INT on PXN R-288 to PXN VORTAC.

SOUTHLAND THREE DEPARTURE