

VIRGINIA BEACH, VIRGINIA

TACAN RWY 5L

TACAN NTU Chan 113	APCH CRS 043°	Rwy Idg 8000
		TDZE 20
		Arprt Elev 22

AL-934 [USN] OCEANA NAS (APOLLO SOUCEK FIELD) (KNTU)

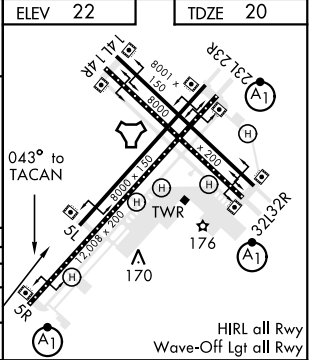
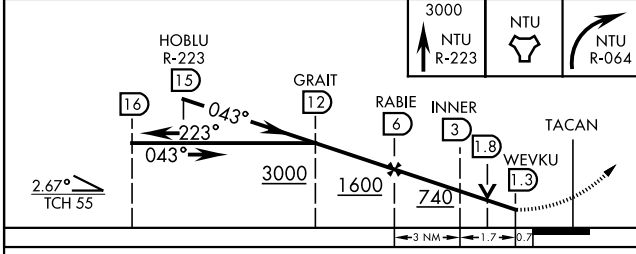
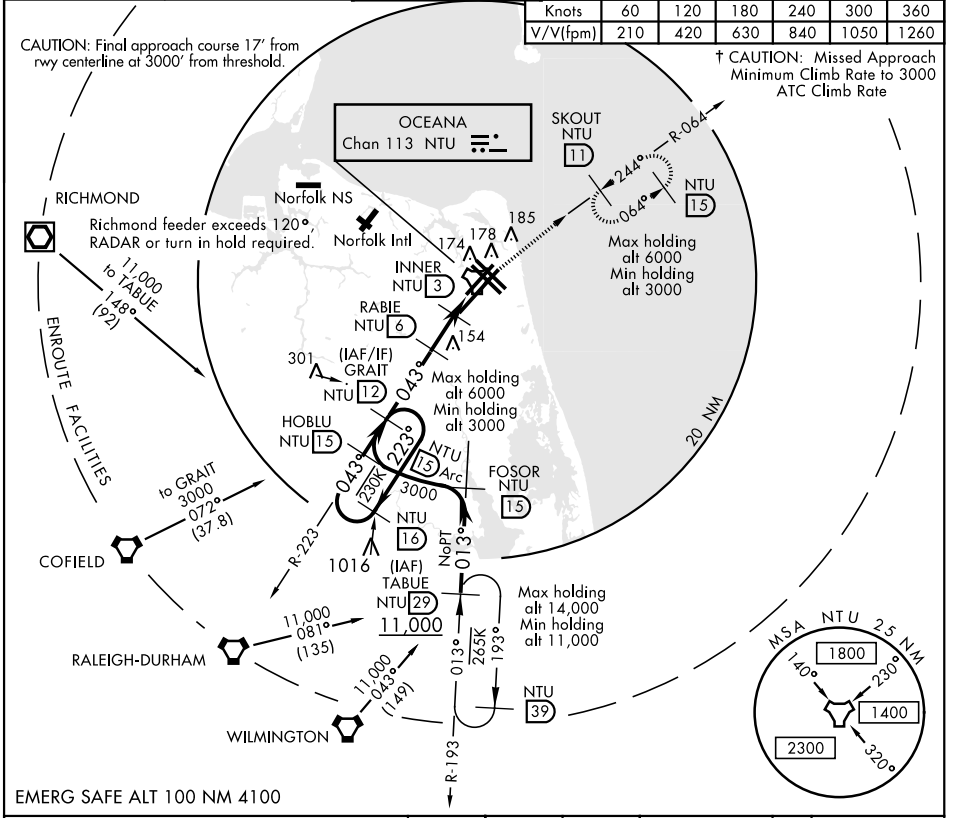
↑ MISSED APPROACH: Climb to 3000 via R-223 to NTU TACAN and via R-064 to SKOUT and hold.

ATIS 317.6	APP CON 123.9 266.8	OCEANA TOWER 127.075 360.2	GND CON 119.6 336.4	CLNC DEL 254.4	ASR/ PAR
----------------------	-------------------------------	--------------------------------------	-------------------------------	--------------------------	-------------

Knots	60	120	180	240	300	360
V/V(fpm)	210	420	630	840	1050	1260

CAUTION: Final approach course 17° from rwy centerline at 3000' from threshold.

↑ CAUTION: Missed Approach Minimum Climb Rate to 3000 ATC Climb Rate



CATEGORY	A	B	C	D
S-5L	440-1	420 (500-1)	440-1 1/8	420 (500-1 1/8)
CIRCLING	500-1	478 (500-1)	640-1 3/4 618 (700-1 3/4)	640-2 618 (700-2)

VIRGINIA BEACH, VIRGINIA
Amdt 4 10OCT19

36° 49' N-76° 02' W

OCEANA NAS (APOLLO SOUCEK FIELD) (KNTU)

TACAN RWY 5L

NE-3, 15 JUL 2021 to 12 AUG 2021

NE-3, 15 JUL 2021 to 12 AUG 2021