

# HI-TACAN RWY 32L/R

TACAN NTU Chan 113	APCH CRS 309°	Rwy ldg TDZE 32L 8000 32R 8001	Rwy ldg TDZE 32L 22 32R 21
		Arprt Elev 22	

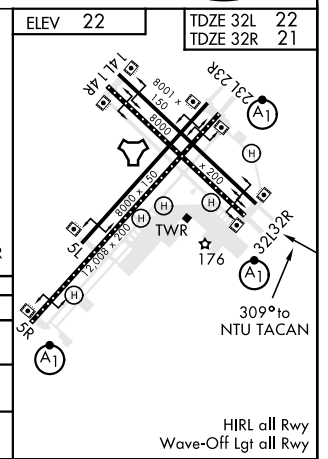
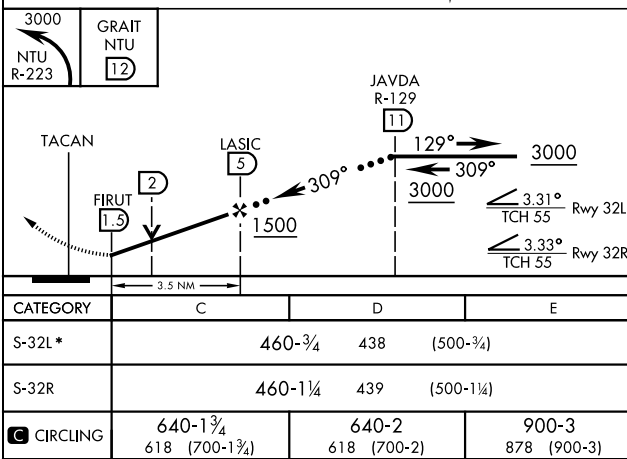
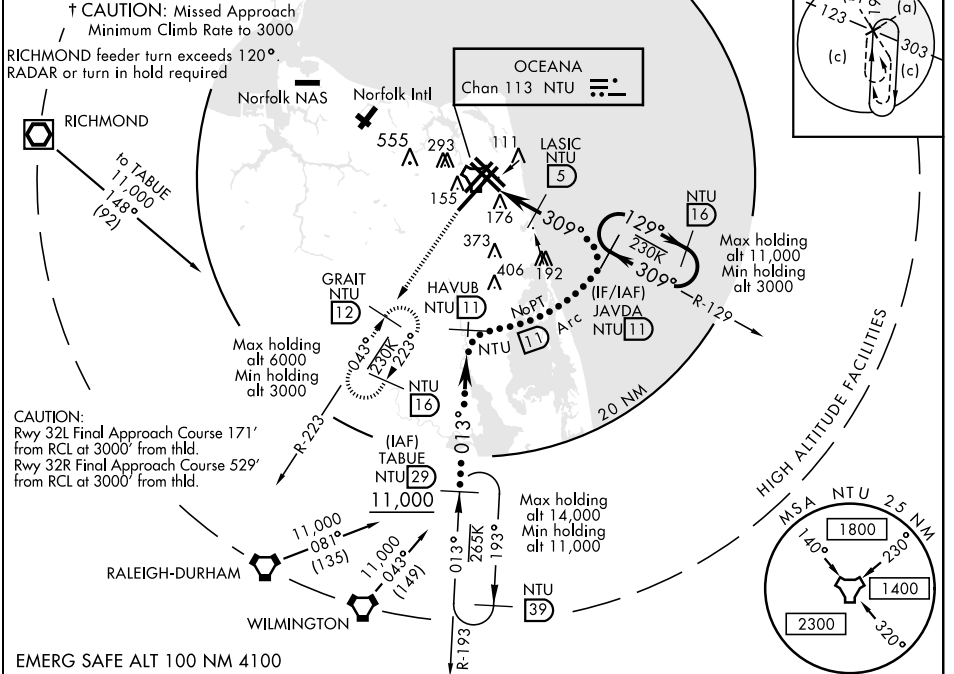
JAL-934 [USN]  
 OCEANA NAS (APOLLO SOUCEK FIELD) (KNTU)

\* When ALS inop, increase CAT CDE vis to 1¼ miles.  
 ALSF-1

† MISSED APPROACH: Climbing left turn to 3000, intercept NTU TACAN R-223 to GRAIT and hold.

ATIS 317.6	APP CON 123.9 266.8	OCEANA TOWER 127.075 360.2	GND CON 119.6 336.4	CLNC DEL 254.4	ASR/PAR
------------	---------------------	----------------------------	---------------------	----------------	---------

Knots	60	120	180	240	300	360
V/V(fpm)	220	440	660	880	1100	1320



VIRGINIA BEACH, VIRGINIA 36°49'N-76°02'W OCEANA NAS (APOLLO SOUCEK FIELD) (KNTU)

Amtd 4 03JAN19

# HI-TACAN RWY 32L/R

NE-3, 15 JUL 2021 to 12 AUG 2021

NE-3, 15 JUL 2021 to 12 AUG 2021