

PENSACOLA, FLORIDA

# ILS Y or RNAV (GPS) RWY 7L

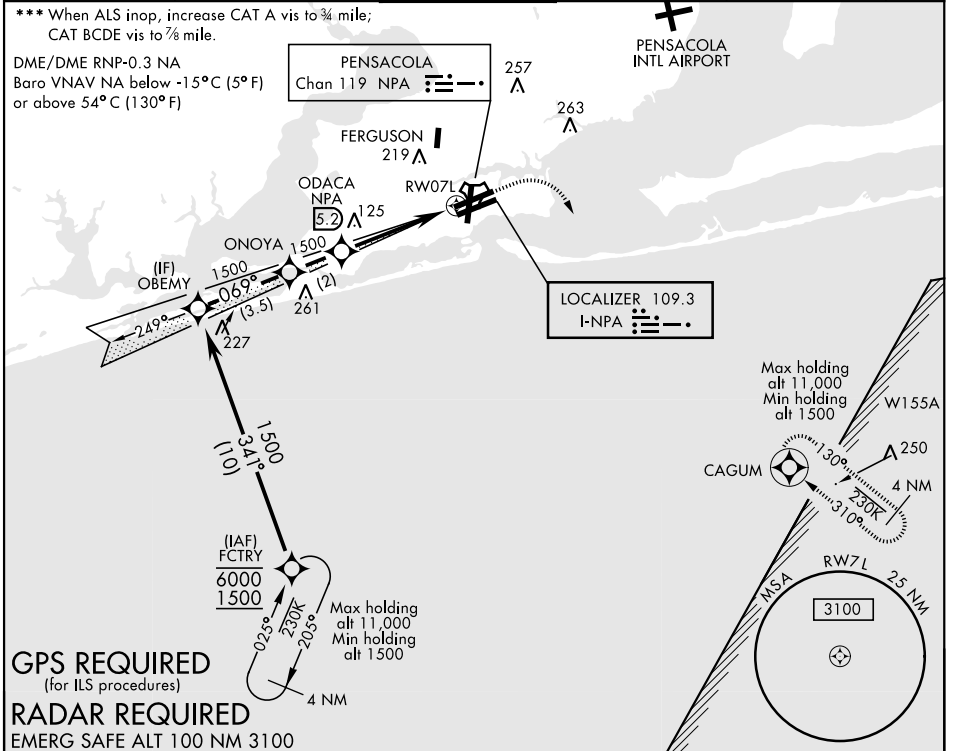
LOC I-NPA <b>109.3</b>	APCH CRS <b>069°</b>	Rwy Idg TDZE Arpt Elev <b>8001</b> <b>23</b> <b>28</b>	AL-736 [USN]	PENSACOLA NAS (FORREST SHERMAN FLD) (KNPA)	
---------------------------	-------------------------	---	--------------	--	--

▼ \* When ALS inop, increase vis to ½ mile.  
 \*\* When ALS inop, increase CAT AB vis to 1 mile, CAT CDE vis to 1½ miles.
 

 ALSF-1  

 MISSED APPROACH: Climb to 600, then climbing right turn to 1500 direct CAGUM and hold.

ATIS <b>124.35 266.8</b>	PENSACOLA APP CON <b>120.65 270.8</b>	SHERMAN TOWER <b>120.7 340.2</b>	GND CON <b>121.7 336.4</b>	CLNC DEL <b>134.1 268.7</b>	ASR/PAR
-----------------------------	--	-------------------------------------	-------------------------------	--------------------------------	---------



**GPS REQUIRED**  
(for ILS procedures)

**RADAR REQUIRED**

EMERG SAFE ALT 100 NM 3100

			600	1500	CAGUM	ELEV 28	TDZE 23
			↑ crs 069°				
	FCTRY	OBEMY	ONOYA	ODACA	TACAN		
	6000 1500	341° 1500	069° 1500	5.2 1500	↑ 1.1 NM to RW7L		
	GS 3.00° TCH 55				4.5 NM		
CATEGORY	A	B	C	D	E		
S-ILS 7L *		223-½	200	(200-½)			
LNAV/VNAV	274-½	285-½	293-½	304-½	281 (300-½)		
DA ***	251 (300-½)	262 (300-½)	270 (300-½)				
LNAV MDA**	420-½	397 (400-½)	420-⅝	397 (400-⅝)			
Ⓢ CIRCLING	520-1	492 (500-1)	540-1½ 512 (600-1½)	580-2	552 (600-2)		
						HIRL all Rwy REIL Rwy 1-19, 7L-25R	

PENSACOLA, FLORIDA 30°21'N-87°19'W PENSACOLA NAS (FORREST SHERMAN FLD) (KNPA)

# ILS Y or RNAV (GPS) RWY 7L

SE-3. 02 JAN 2020 to 30 JAN 2020

SE-3. 02 JAN 2020 to 30 JAN 2020