

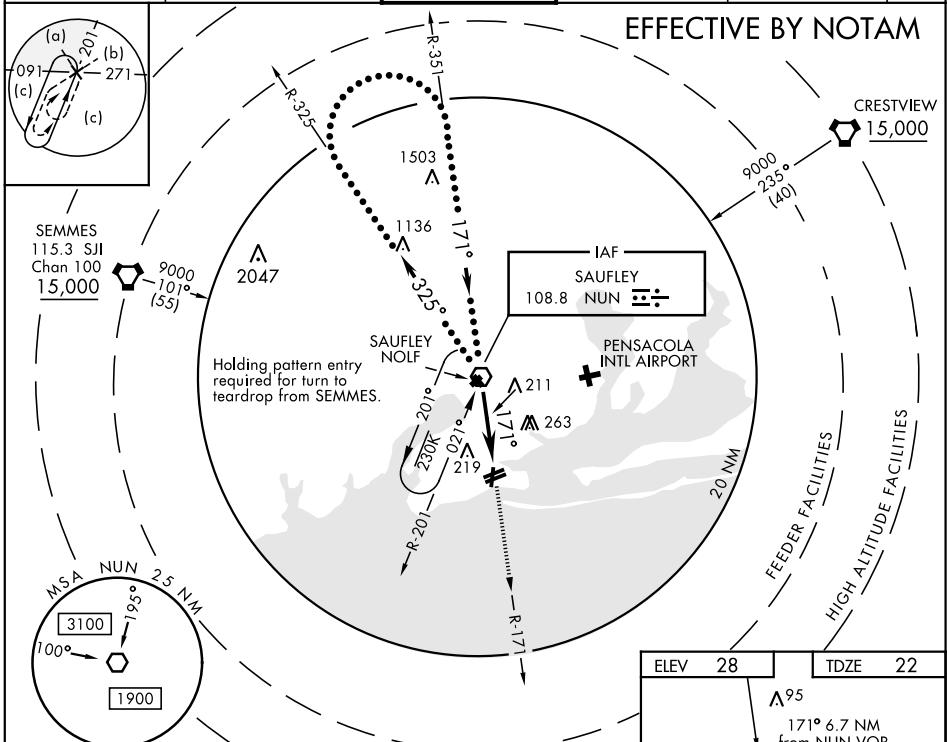
HI-VOR RWY 19

VOR NUN 108.8	APCH CRS 171°	Rwy ldg TDZE 7136 Arprt Elev 28	JAL-736 [USN]	PENSACOLA NAS (FORREST SHERMAN FLD) (KNPA)
-------------------------	-------------------------	---	---------------	--

▼ Procedure not available when Pensacola South Military Operating Area (MOA) is active.

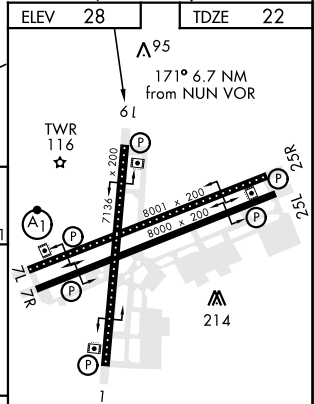
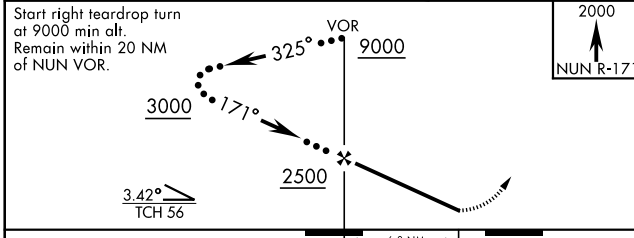
MISSED APPROACH: Climb to 2000 via NUN R-171. Expect RADAR vectors within 3 NM of MAP.

ATIS 124.35 266.8	PENSACOLA APP CON 120.65 270.8	SHERMAN TOWER 120.7 340.2	GND CON 121.7 336.4	CLNC DEL 134.1 268.7	ASR/PAR
-----------------------------	--	-------------------------------------	-------------------------------	--------------------------------	---------



EFFECTIVE BY NOTAM

RADAR REQUIRED
EMERG SAFE ALT 100 NM 3100



CATEGORY	C	D	E	HIRL all Rwy REIL Rwy 1-19, 7L-25R FAF to MAP 6.0 NM
S-19	540-1 $\frac{3}{8}$	518 (600-1 $\frac{3}{8}$)		Knots 120 140 160 180 200 Min:Sec 3:00 2:34 2:15 2:00 1:48
CIRCLING	540-1 $\frac{1}{2}$ 512 (600-1 $\frac{1}{2}$)	580-2 552 (600-2)	580-2 552 (600-2)	

HI-VOR RWY 19

SE-3, 05 DEC 2019 to 02 JAN 2020

SE-3, 05 DEC 2019 to 02 JAN 2020