

HI-ILS or LOC/DME RWY 18

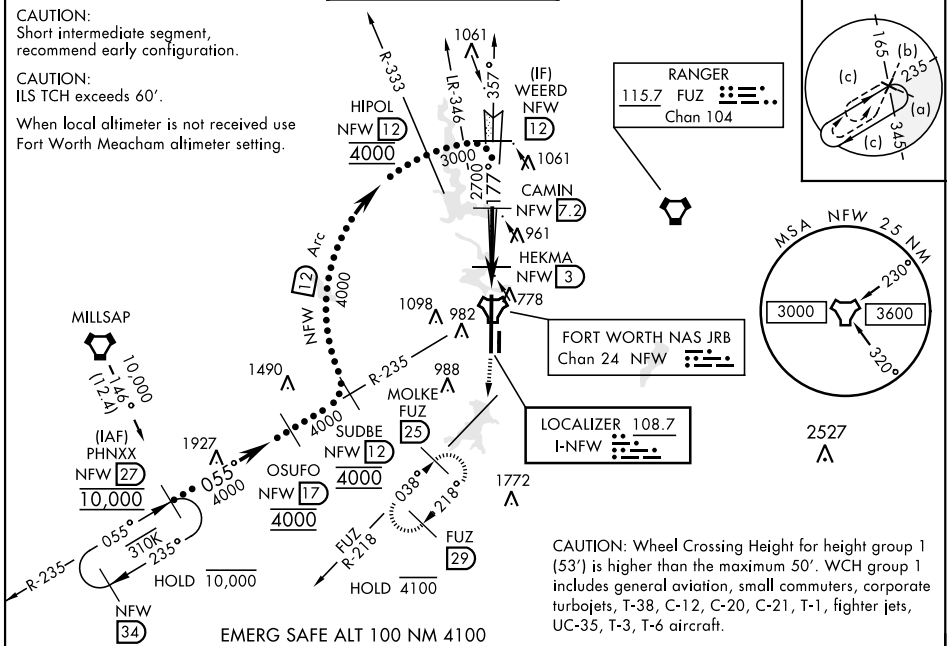
LOC I-NFW 108.7	APCH CRS 177°	Rwy Ldg 11,999 TDZE 636 Arpt Elev 650	AL-160 [USN]	FORT WORTH NAS JRB (CARSWELL FLD) (KNFW)
---------------------------	-------------------------	---	--------------	--

TACAN required.

* Circling not authorized E of Rwy 18-36.

MISSED APPROACH: Climb to 3000 heading 177° and FUZ VORTAC R-218 to MOLKE and hold. FUZ VORTAC required for missed approach.

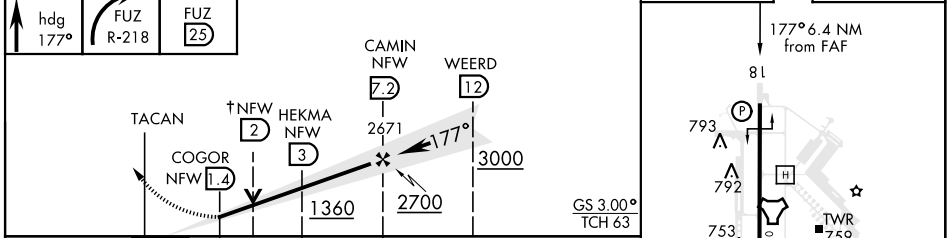
ATIS* 351.675	REGIONAL APP CON 125.8 257.95	NAVY FORT WORTH TOWER* 120.950 269.325	GND CON 121.675 279.575	CLNC DEL 126.4 254.325	ASR/PAR
-------------------------	---	--	-----------------------------------	----------------------------------	---------



SC-2, 27 JAN 2022 to 24 FEB 2022

SC-2, 27 JAN 2022 to 24 FEB 2022

EMERG SAFE ALT 100 NM 4100



CATEGORY	C		D		E	
	Distance	Altitude	Distance	Altitude	Distance	Altitude
S-ILS 18	836-3/4	200	(200-3/4)			
S-LOC 18	1040-1 1/8	404	(400-1 1/8)			
CIRCLING*	1320-1 3/4 670 (700-1 3/4)	1320-2 670 (700-2)	1440-2 3/4 790 (800-2 3/4)			
FORT WORTH MEACHAM ALTIMETER						
S-ILS 18	856-3/4	220	(300-3/4)			
S-LOC 18	1060-1 1/4	424	(500-1 1/4)			
CIRCLING*	1340-2 690 (700-2)	1340-2 1/4 690 (700-2 1/4)	1460-2 3/4 810 (900-2 3/4)			

FORT WORTH, TEXAS 32° 46' N-97° 26' W FORT WORTH NAS JRB (CARSWELL FLD) (KNFW)

Amtd 2 25MAR21

HI-ILS or LOC/DME RWY 18

