

TACAN RWY 14

TACAN NBC Chan 42	APCH CRS 127°	Rwy Idg TDZE Arprt Elev	8001 33 37
-----------------------------	-------------------------	-------------------------------	---------------------------------------

AL-916 [USN]

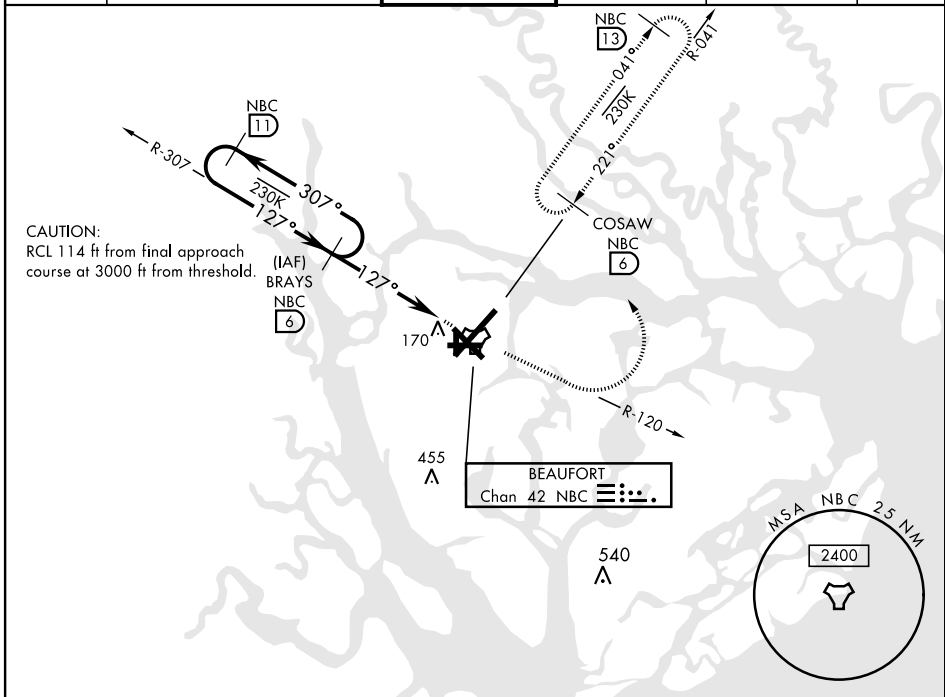
BEAUFORT MCAS (MERRITT FLD) (KNBC)

RADAR required.

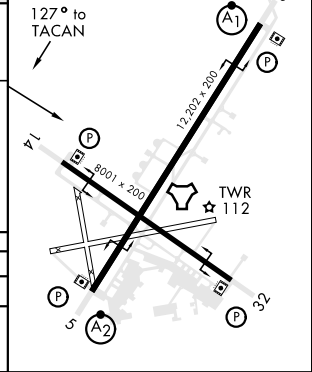
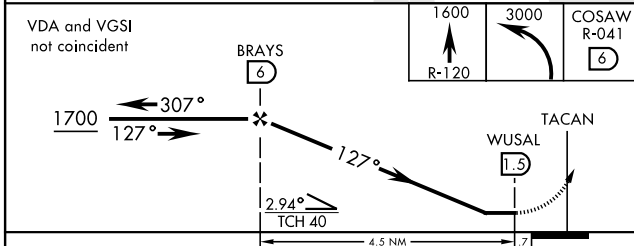
▼

MISSED APPROACH: Climb to 1600 on NBC TACAN R-120, then climbing left turn to 3000 via hdg 330° to intercept NBC R-041 to 6 DME (COSAW) and hold. Continue climb in hold to 3000.

ATIS ★ 279.525	BEAUFORT APP CON 125.125 292.125 (ABV 3000) 123.7 269.125 (3000 and BLW)	TOWER ★ 119.05 342.875	GND CON 128.15 348.625	CLNC DEL 128.15 254.375	ASR/PAR
--------------------------	--	----------------------------------	----------------------------------	-----------------------------------	---------



ELEV 37	TDZE 33
HIRL Rwy 5-23 and 14-32	



CATEGORY	A	B	C	D	E
S-14	420-1 387 (400-1)		420-1½ 387 (400-1½)		
CIRCLING	500-1 463 (500-1)		580-1½ 543 (600-1½)	600-2 563 (600-2)	740-2½ 703 (800-2½)

TACAN RWY 14

SE-2, 17 JUN 2021 to 15 JUL 2021

SE-2, 17 JUN 2021 to 15 JUL 2021