
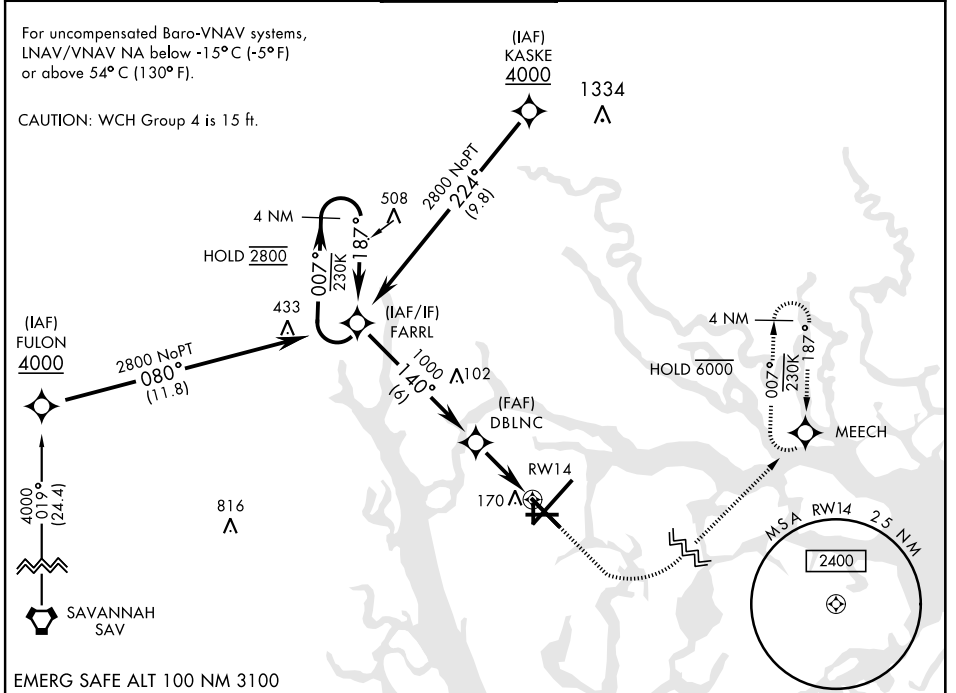


RNAV (GPS) RWY 14

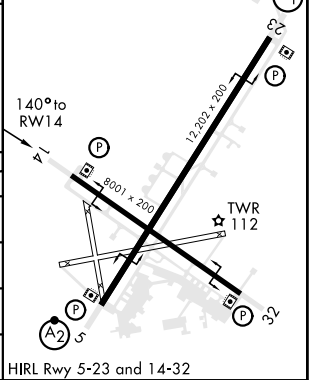
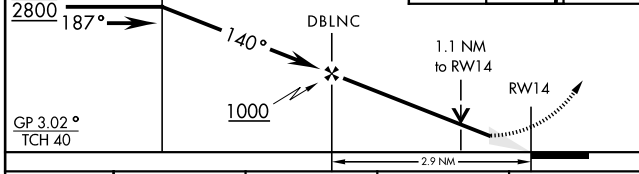
WAAS Chan 91240 W14A	APCH CRS 140°	Rwy ldg TDZE Arpt Elev 8001 33 37	AL-916 [USN]	BEAUFORT MCAS (MERRITT FLD) (KNBC)
--	-------------------------	---	--------------	------------------------------------

RNP APCH - DME/DME RNP-0.3 NA RADAR required for arrivals via KASKE or FARRL IAFs. 	MISSED APPROACH: Climb to 700, then climbing left turn to 3000 direct MEECH and hold.
--	---

ATIS ★ 279.525	BEAUFORT APP CON (ABV 3000) 125.125 292.125 (3000 and BLW) 123.7 269.125	BEAUFORT TOWER ★ 119.05 342.875	GND CON 128.15 348.625	CLNC DEL 128.15 254.375	ASR/ PAR
--------------------------	--	---	----------------------------------	-----------------------------------	-------------



EMERG SAFE ALT 100 NM 3100	700	3000	MEECH	ELEV 37	TDZE 33
----------------------------	-----	------	-------	---------	---------



CATEGORY	A	B	C	D
LPV DA	233-3/4	200	(200-3/4)	
LNAV/VNAV DA	420-1 1/8	387	(400-1 1/8)	
LNAV MDA	420-1	387 (400-1)	420-1 1/8	387 (400-1 1/8)
C CIRCLING	500-1	463 (500-1)	580-1 1/2	600-2
			543 (600-1 1/2)	563 (600-2)

RNAV (GPS) RWY 14

SE-2, 17 JUN 2021 to 15 JUL 2021

SE-2, 17 JUN 2021 to 15 JUL 2021