

WAAS CH <b>77537</b> <b>W25A</b>	APP CRS <b>251°</b>	Rwy Idg TDZE Apt Elev	<b>4201</b> <b>1027</b> <b>1027</b>
--	------------------------	-----------------------------	---

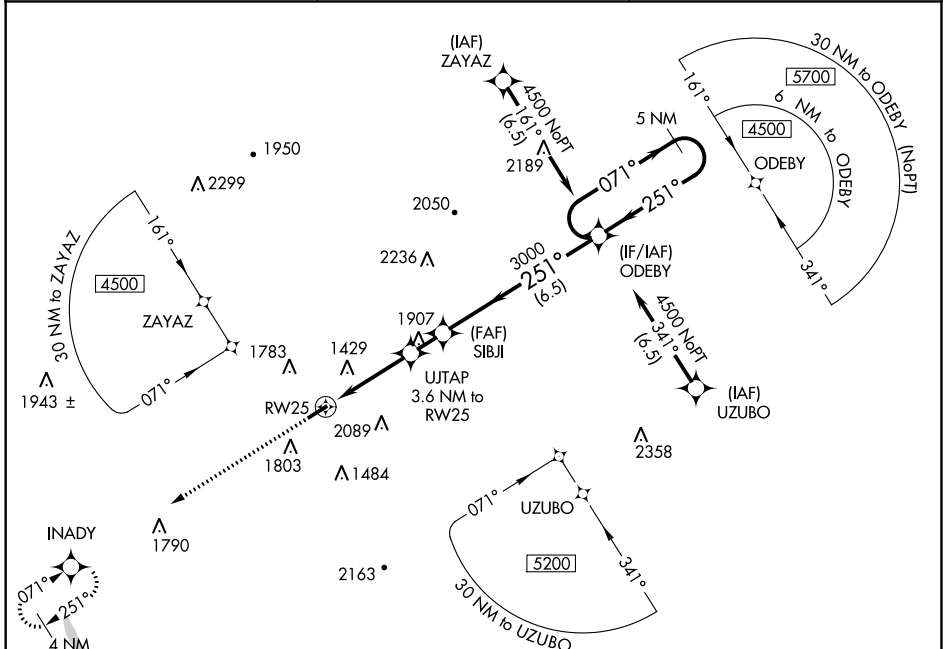
# RNAV (GPS) RWY 25

SIDNEY MUNI (N23)

**NA** DME/DME RNP-0.3 NA. When local altimeter setting not received, use Binghamton altimeter setting and increase all MDA 160 feet. Rwy 7, 25 helicopter visibility reduction below 1 SM NA. Circling Rwy 7 NA at night. When Rwy 25 VGSI inop, Straight-in and Circling minimums NA at night.

MISSED APPROACH: Climb to 3500 direct INADY and hold.

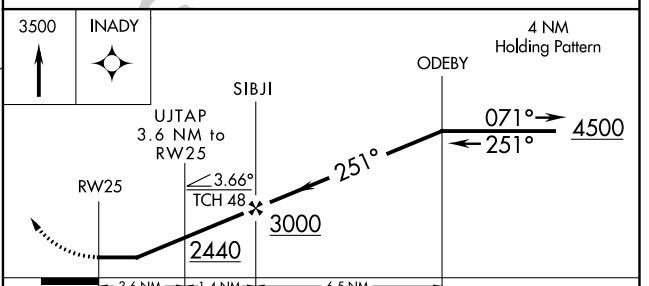
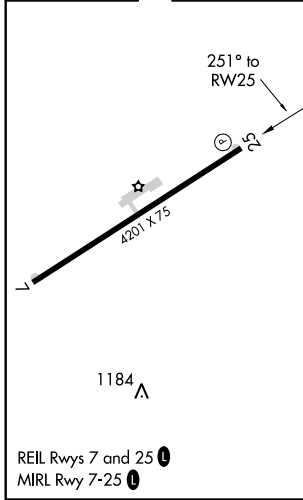
AWOS-3 <b>118.275</b>	BOSTON CENTER <b>133.25 279.5</b>	UNICOM <b>122.8 (CTAF) 0</b>
--------------------------	--------------------------------------	---------------------------------



NE-2, 24 MAY 2018 to 21 JUN 2018

NE-2, 24 MAY 2018 to 21 JUN 2018

ELEV 1027	TDZE 1027
-----------	-----------



CATEGORY	A	B	C	D
LP MDA	2080-1¼ 1053 (1100-1¼)	2080-1½ 1053 (1100-1½)	2080-3 1053 (1100-3)	NA
LNAV MDA	2200-1¼ 1173 (1200-1¼)	2200-1½ 1173 (1200-1½)	2200-3 1173 (1200-3)	NA
<b>C</b> CIRCLING	2200-1¼ 1153 (1200-1¼)	2240-1½ 1213 (1300-1½)	2460-3 1433 (1500-3)	NA

APP CRS <b>071°</b>	Rwy ldg <b>4201</b>
	TDZE <b>1027</b>
	Apt Elev <b>1027</b>

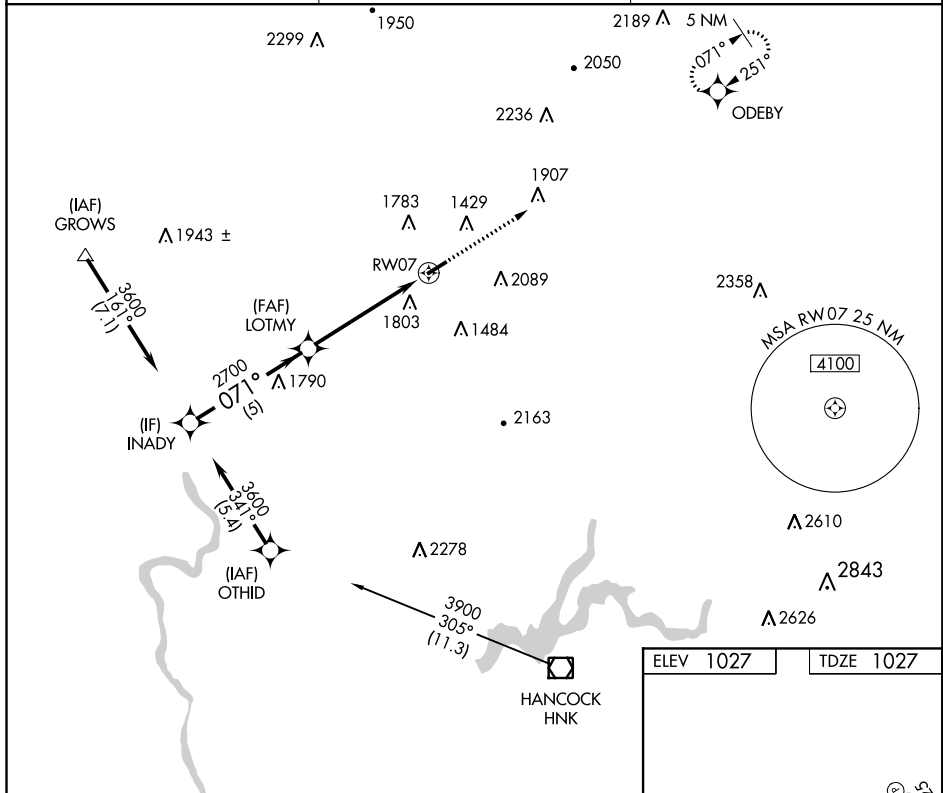
# RNAV (GPS) RWY 7

SIDNEY MUNI (N23)

**▽** DME/DME RNP-0.3 NA. When local altimeter setting not received, use Binghamton altimeter setting and increase all MDA 160 feet. Rwy 7, 25 helicopter visibility reduction below 1 SM NA. Straight-in Rwy 7 NA at night, Circling Rwy 7, 25 NA at night.

**MISSED APPROACH:** Climb to 3700 direct ODEBY and hold.

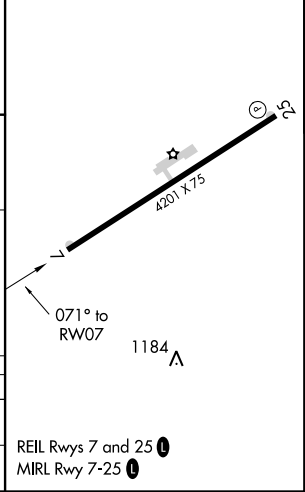
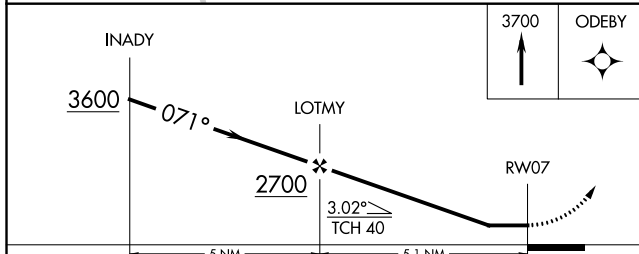
AWOS-3 <b>118.275</b>	BOSTON CENTER <b>133.25 279.5</b>	UNICOM <b>122.8 (CTAF)</b>
--------------------------	--------------------------------------	-------------------------------



NE-2, 24 MAY 2018 to 21 JUN 2018

NE-2, 24 MAY 2018 to 21 JUN 2018

ELEV 1027	TDZE 1027
-----------	-----------



CATEGORY	A	B	C	D
LNVA MDA	2140-1½ 1113 (1200-1¼)	2140-1½ 1113 (1200-1½)	2140-3 1113 (1200-3)	NA
<b>Ⓢ</b> CIRCLING	2180-1¼ 1153 (1200-1¼)	2240-1½ 1213 (1300-1½)	2460-3 1433 (1500-3)	NA

REIL Rws 7 and 25 **Ⓢ**  
MIRL Rwy 7-25 **Ⓢ**