

APP CRS	Rwy Idg	<b>2103</b>
<b>008°</b>	TDZE	<b>182</b>
	Apt Elev	<b>182</b>

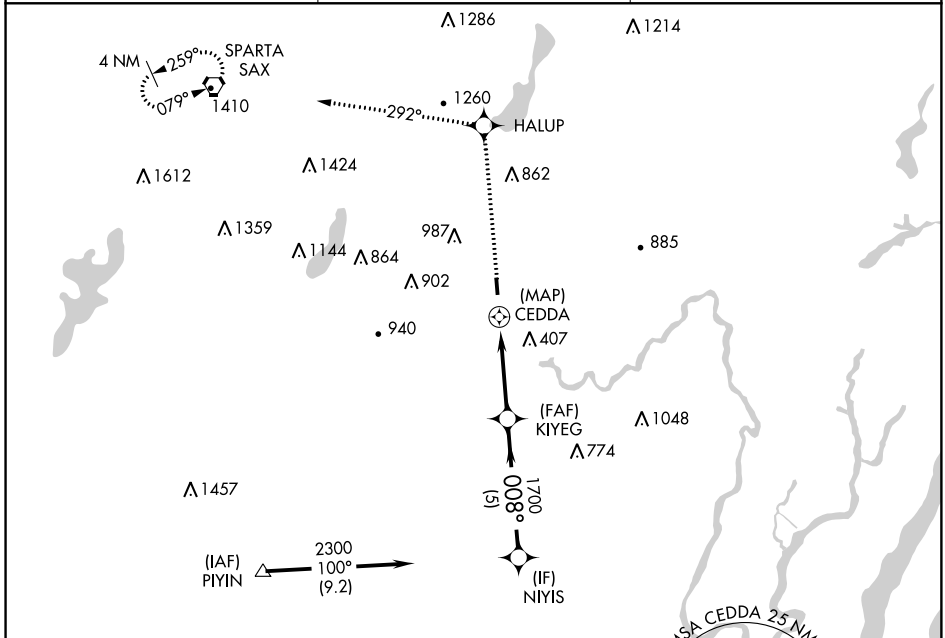
# RNAV (GPS) RWY 1

LINCOLN PARK (NØ7)

Use Teterboro altimeter setting. DME/DME RNP-0.3 NA.  
 Visibility reduction by helicopters NA.

MISSED APPROACH: Climb to 3000 direct HALUP and via 292° track to SAX VORTAC and hold.

NEW YORK APP CON <b>127.6 379.9</b>	GCO <b>121.725</b>	UNICOM <b>122.8 (CTAF) Ø</b>
--	-----------------------	---------------------------------

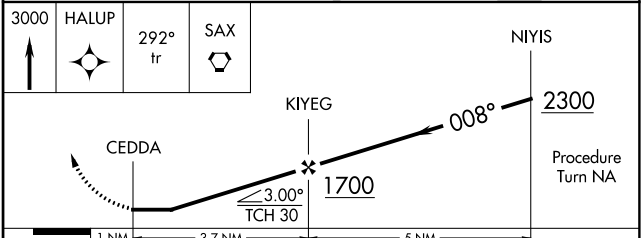
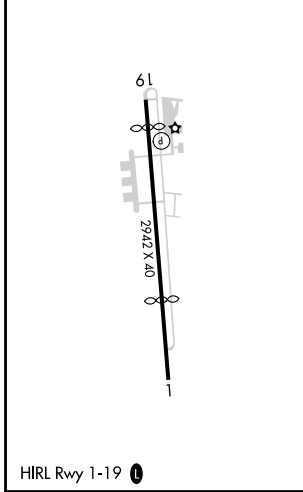


NE-2: 01 FEB 2018 to 01 MAR 2018

NE-2: 01 FEB 2018 to 01 MAR 2018

ELEV 182	TDZE 182
----------	----------

Procedure NA for arrivals at PIYIN via V3-405-419 southwestbound.



CATEGORY	A	B	C	D
LNAV MDA	1240-1¼ 1058 (1100-1¼)		NA	
CIRCLING	1460-1¼ 1278 (1300-1¼)		NA	

APP CRS	Rwy Idg	<b>2683</b>
<b>203°</b>	TDZE	<b>182</b>
	Apt Elev	<b>182</b>

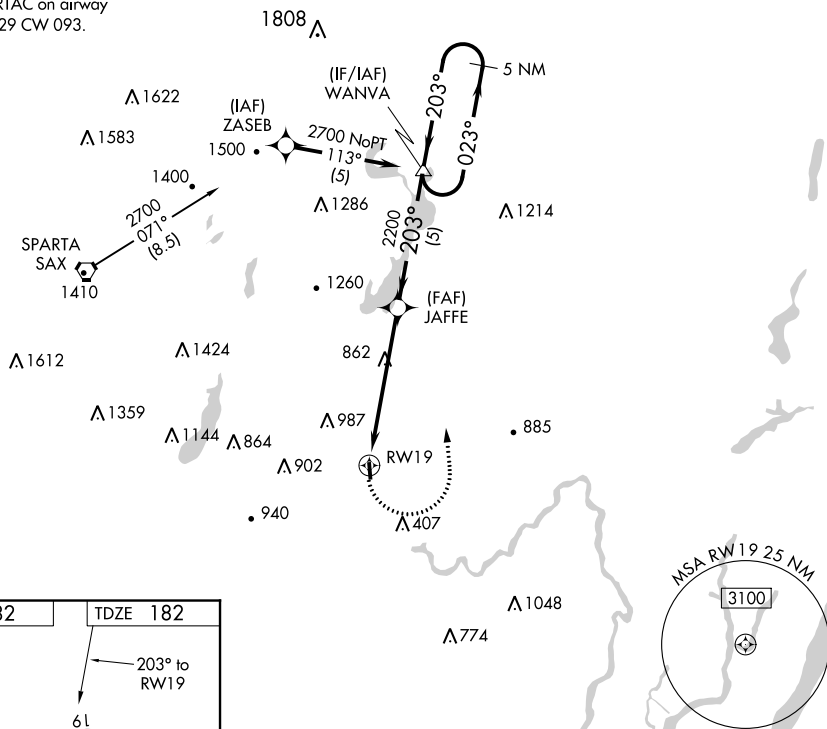
# RNAV (GPS) RWY 19

LINCOLN PARK (NØ7)

<p><b>▼</b> Use Teterboro altimeter setting. DME/DME RNP-0.3 NA.</p> <p><b>▲</b> NA Visibility reduction by helicopters NA.</p>	<p>MISSED APPROACH: Climbing left turn to 2700 direct WANVA and hold.</p>
---	---

<p>NEW YORK APP CON</p> <p><b>127.6 379.9</b></p>	<p>GCO</p> <p><b>121.725</b></p>	<p>UNICOM</p> <p><b>122.8 (CTAF) 0</b></p>
---	----------------------------------	--

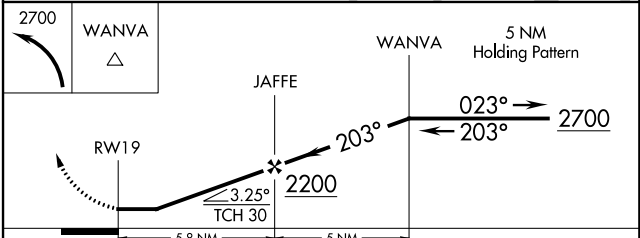
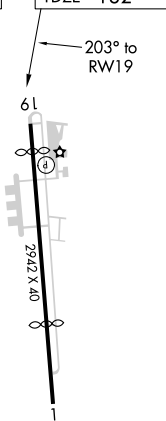
Procedure NA for arrivals at SAX VORTAC on airway radials 029 CW 093.



NE-2: 01 FEB 2018 to 01 MAR 2018

NE-2: 01 FEB 2018 to 01 MAR 2018

ELEV 182	TDZE 182
----------	----------



CATEGORY	A	B	C	D
LNAV MDA	1280-1¼ 1098 (1100-1¼)		NA	
CIRCLING	1460-1¼ 1278 (1300-1¼)		NA	