

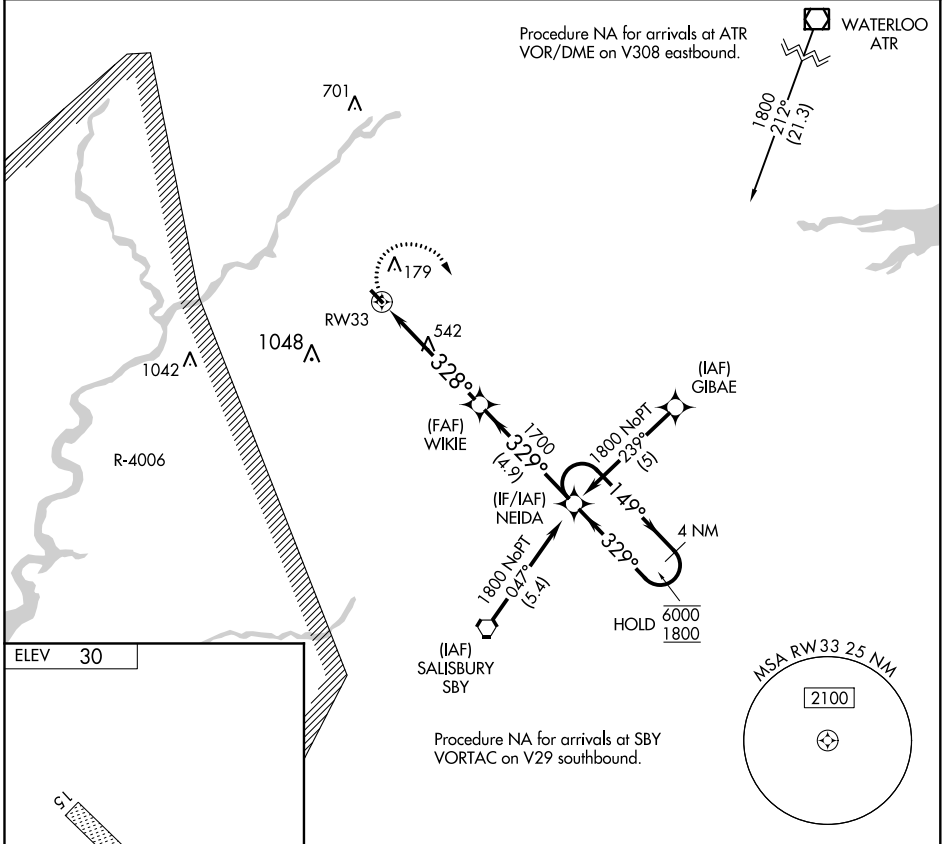
APP CRS 328°	Rwy Idg TDZE Apt Elev	N/A N/A 30
------------------------	-----------------------------	---------------------------------------

RNAV (GPS)-A

LAUREL (N06)

RNP APCH.	<p>Procedure NA at night. Use Salisbury altimeter setting; when not received, use Georgetown altimeter setting.</p>	<p>MISSED APPROACH: Climbing right turn to 1800 direct NEIDA and hold.</p>
-----------	---	--

<p>PATUXENT APP CON* 127.95 314.0</p>	<p>UNICOM 122.8 (CTAF) 0</p>
--	---



1800	NEIDA	Visual Segment - Obstacles.	4 NM Holding Pattern
CATEGORY	A	B	C D
CIRCLING	880-1¼	850 (900-1¼)	NA

LIRL Rwy 15-33 0

NE-3, 17 JUN 2021 to 15 JUL 2021

NE-3, 17 JUN 2021 to 15 JUL 2021