

| | | |
|-------------|----------|--------------|
| APP CRS | Rwy Idg | 10000 |
| 036° | TDZE | 1189 |
| | Apt Elev | 1189 |

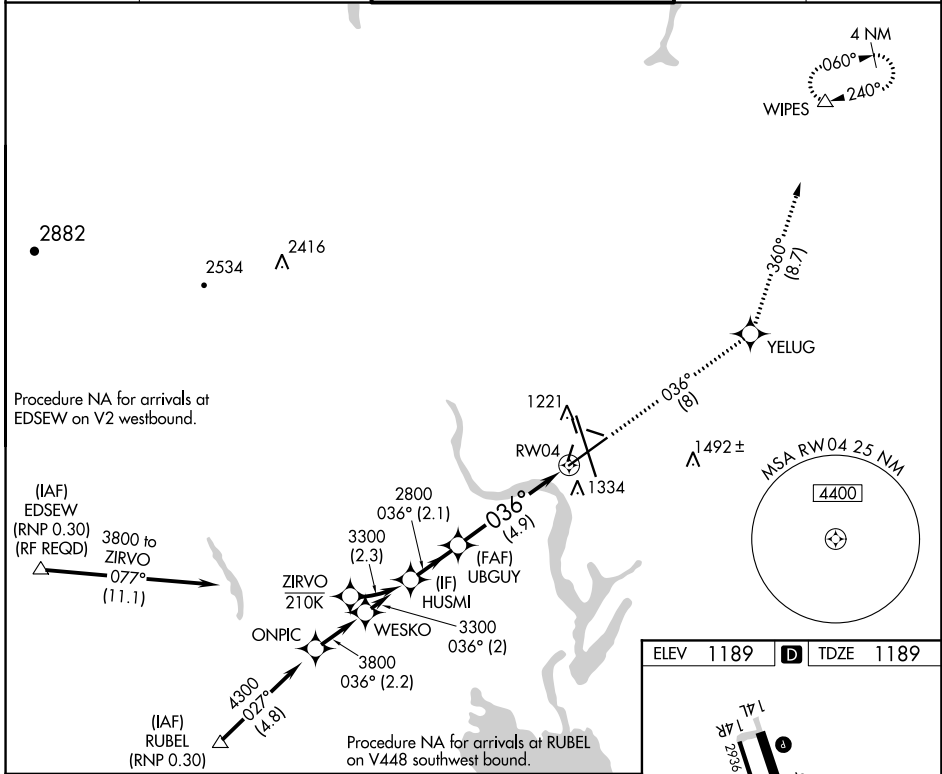
RNAV (RNP) Z RWY 4

GRANT COUNTY INTL (MWH)

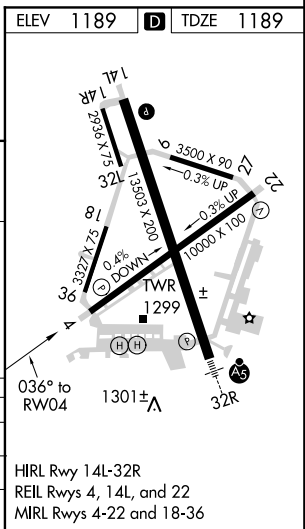
For uncompensated Baro-VNAV systems, procedure NA below -17°C (2°F) or above 46°C (114°F). GPS required.

MISSED APPROACH: Climb to 4000 on track 036° to YELUG and on track 360° to WIPES and hold.

| | | | | |
|-----------------------|---|--|-------------------------|-------------------------|
| ATIS 119.05 | GRANT COUNTY APP CON * 126.4 379.95 | GRANT COUNTY TOWER * 118.25 (CTAF) 0 257.8 (EAST) 128.0 257.8 (WEST) | GND CON 121.9 | UNICOM 122.95 |
|-----------------------|---|--|-------------------------|-------------------------|



| | | | | |
|-------------------|--------|----------|---------------|---------|
| Procedure Turn NA | HUSMI | UBGUY | YELUG | WIPES |
| | | | tr 036° | tr 360° |
| GP 3.00° TCH 50 | 3300 | 2800 | | |
| | 036° | | | |
| | 2.1 NM | 4.9 NM | | |
| CATEGORY | A | B | C | D |
| RNP 0.10 DA | | 1439-3/4 | 250 (300-3/4) | |
| RNP 0.30 DA | | 1498-1 | 309 (400-1) | |



AUTHORIZATION REQUIRED

HIRL Rwy 14L-32R
REIL Rwys 4, 14L, and 22
MIRL Rwys 4-22 and 18-36

NW-1, 03 JAN 2019 to 31 JAN 2019

NW-1, 03 JAN 2019 to 31 JAN 2019