

WAAS CH 61230 W02A	APP CRS 022°	Rwy Idg TDZE 466 Apt Elev 472	8012
--	------------------------	---	-------------

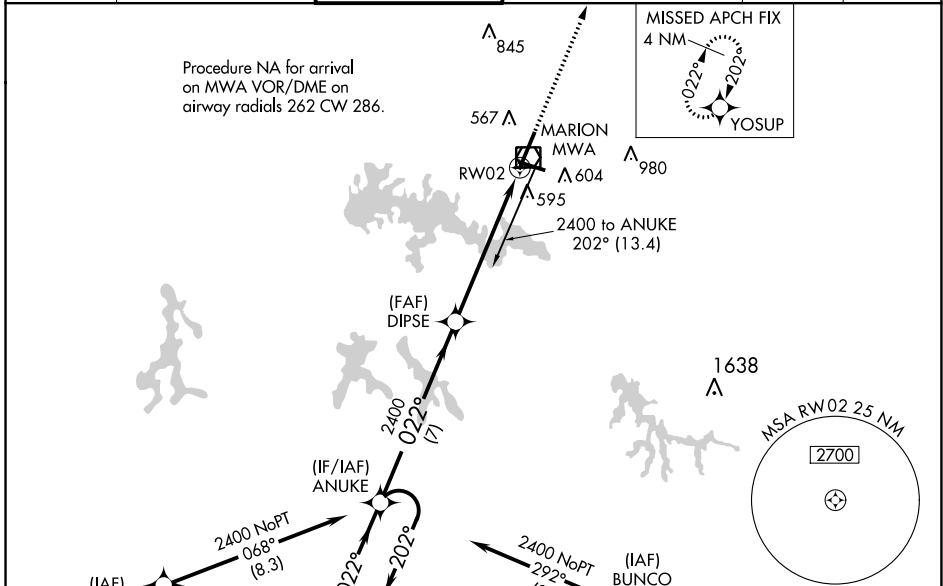
RNAV (GPS) RWY 2

VETERANS AIRPORT OF SOUTHERN ILLINOIS (MWA)

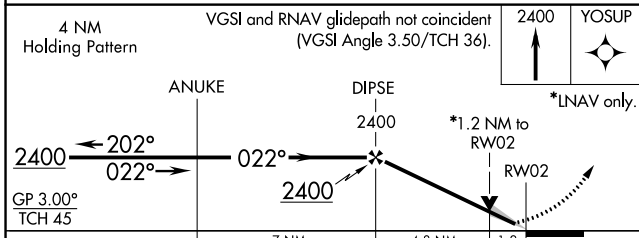
⚠ For uncompensated Baro-VNAV systems, LNAV/VNAV NA below -15°C (5°F) or above 54°C (130°F). DME/DME RNP-0.3 NA. When local altimeter setting not received, use Carbondale/Murphysboro altimeter setting and increase all DA/MDA 40 feet, and increase LNAV/VNAV all Cats and LNAV Cat C and D visibility 1/8 mile. Baro-VNAV and VDP NA when using Carbondale/Murphysboro altimeter setting. Circling Rwy 11 NA at night.

MISSED APPROACH:
Climb to 2400 direct YOSUP and hold.

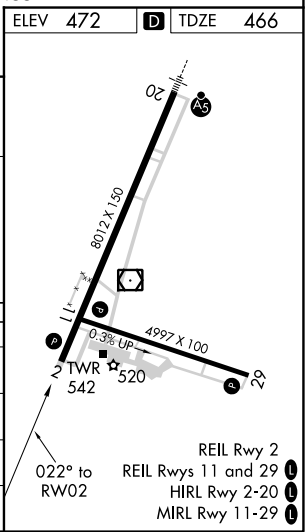
AWOS-3 119.675	KANSAS CITY CENTER 127.475 346.275	MARION TOWER ★ 128.4 (CTAF) 0	CLNC DEL 127.475 (When twr closed)	GND CON 121.7	UNICOM 122.95
--------------------------	--	---	--	-------------------------	-------------------------



ELEV 472	D TDZE 466
----------	-------------------



CATEGORY	A	B	C	D
LPV DA		666-3/4	200 (200-3/4)	
LNAV/VNAV DA		753-1	287 (300-1)	
LNAV MDA	940-1	474 (500-1)	940-1 3/8	474 (500-1 3/8)
CIRCLING	940-1	468 (500-1)	940-1 1/2	1040-2 568 (600-2)



EC-3, 25 FEB 2021 to 25 MAR 2021

EC-3, 25 FEB 2021 to 25 MAR 2021