

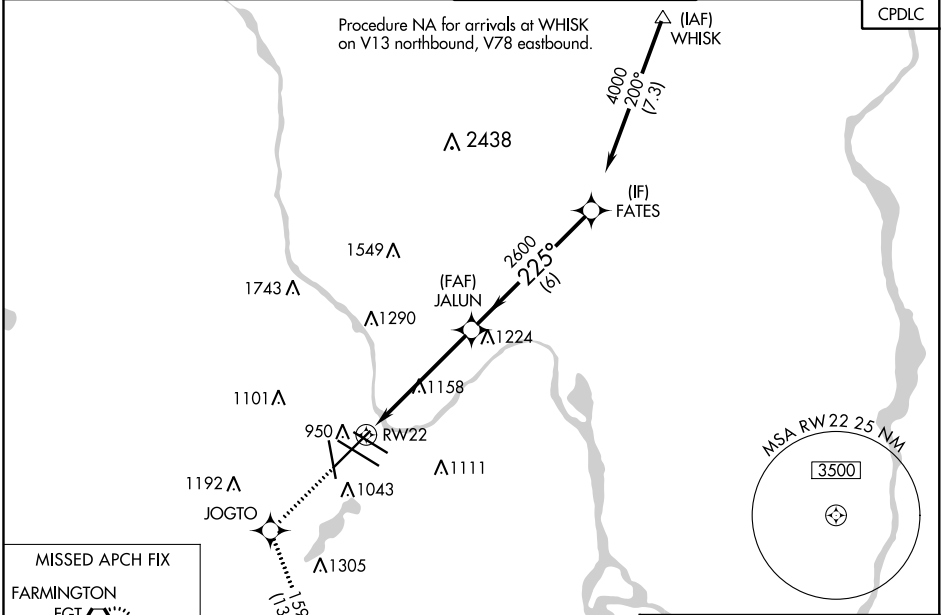
WAAS CH 60927 W22A	APP CRS 225°	Rwy Idg 10006 TDZE 828 Apt Elev 842
--	------------------------	--

RNAV (GPS) RWY 22

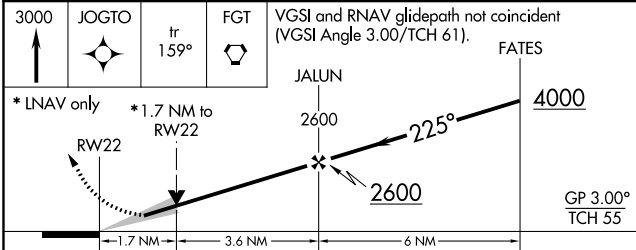
MINNEAPOLIS-ST PAUL INTL/WOLD-CHAMBERLAIN (MSP)

<p>⚠ DME/DME RNP-0.3 NA. For uncompensated Baro-VNAV systems, LNAV/VNAV NA below -27°C (-16°F) or above 54°C (130°F). For inop MALS, increase LPV all Cats visibility to 1½ mile, LNAV/VNAV all Cats visibility to 1¼ mile and LNAV Cat E visibility to 1¼ mile.</p>	<p>MALS R</p>	<p>MISSED APPROACH: Climb to 3000 direct JOGTO and on track 159° to FGT VORTAC and hold.</p>

D-ATIS ARR 135.35 239.275 DEP 120.8	MINNEAPOLIS APP CON 118.725 335.65 (Rwy 35) 119.3 335.65 (12L-30R, 4-22, 17) 126.95 335.65 (12R-30L)	MINNEAPOLIS TOWER 123.675 273.55 (17-35) 123.95 273.55 (12L-30R) 126.7 273.55 (12R-30L, 4-22)	GND CON N 121.8 348.6 S 121.9 348.6 W 127.925 348.6	CLNC DEL 133.2
---	--	---	---	--------------------------



3000	JOGTO	fr 159°	FGT	VGSI and RNAV glidepath not coincident (VGSI Angle 3.00/TCH 61).
------	-------	---------	-----	--



CATEGORY	A	B	C	D	E
LPV DA		1190/40	362 (400-¾)		
LNAV/VNAV DA		1227/45	399 (400-⅝)		
LNAV MDA	1420/40	592 (600-¾)	1420-1¼	592 (600-1¼)	
CIRCLING	1420-1	578 (600-1)	1460-1¾ 618 (700-1¾)	1660-2¾ 818 (900-2¾)	1800-3 958 (1000-3)

ELEV 842	TDZE 828
----------	----------

HIRL all Rwsys
REIL Rwy 17
TDZ/CL Rwsys 12L, 12R, 30L, and 35

NC-1, 29 MAR 2018 to 26 APR 2018

NC-1, 29 MAR 2018 to 26 APR 2018