

PAATS THREE ARRIVAL (RNAV)

PHILADELPHIA, PENNSYLVANIA

NE-4, 02 DEC 2021 to 30 DEC 2021

ARRIVAL ROUTE DESCRIPTION

- FLAT ROCK TRANSITION (FAK.PAATS3):
- GORDONSVILLE TRANSITION (GVE.PAATS3):
- PATUXENT TRANSITION (PXT.PAATS3):

From over ESSO on track 046° to PAATS thence....

Landing MQS: From over PAATS on track 026° to RANSM, then on heading 352°. Expect RADAR vectors to final approach course.

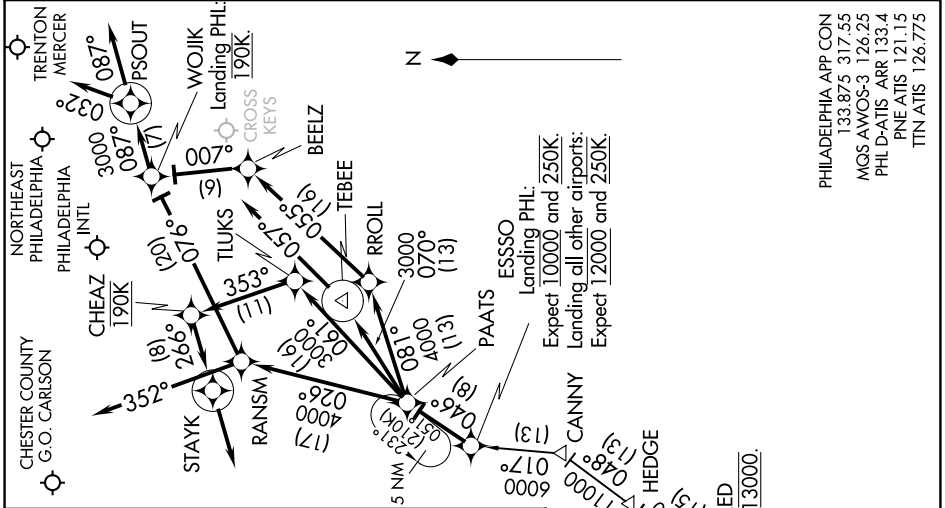
Landing PNE, TTN: From over PAATS on track 026° to RANSM, then on track 076° to WOJIK, then on track 087° to PSOUT, then on heading 032°. Expect RADAR vectors to final approach course.

Landing PHL Rwy 9L, 9R: From over PAATS on track 061° to TLUKS, then on track 353° to cross CHEAZ at 190K, then on track 266° to STAYK, then on track 266°. Expect RADAR vectors to final approach course.

Landing PHL Rwy 17, 35: From over PAATS on track 070° to TEBEE, then on heading 057°. Expect RADAR vectors to final approach course.

Landing PHL Rwy 26, 27L, 27R: From over PAATS on track 081° to RROLL, then on track 055° to BEEZ, then on track 007° to cross WOJIK at 190K, then on track 087° to PSOUT, then on track 087°. Expect RADAR vectors to final approach course.

- NOTE: DME/DME/IRU or GPS required.
- NOTE: RNAV 1.
- NOTE: For turbojets only.
- NOTE: PXT transition as assigned by ATC.
- NOTE: RADAR required.
- NOTE: CAUTION: Parachute Jumping 3.3 NM NE BEEZ, 1.5 NM radius Cross Keys Airport AOB 13,500 (SR-55).



PHILADELPHIA APP CON
133.875 317.55
MQS AMWOS-3 126.25
PHL D-ATIS ARR 133.4
PNE ATIS 121.15
TTN ATIS 126.775

Expect 10000 and 250K.
Landing all other airports:
Expect 12000 and 250K.

PAATS THREE ARRIVAL (RNAV)

PHILADELPHIA, PENNSYLVANIA

NE-4, 02 DEC 2021 to 30 DEC 2021

NOTE: Chart not to scale.