

WAAS CH 63006 W11A	APP CRS 113°	Rwy Idg TDZE Apt Elev	5400 644 660
--	------------------------	-----------------------------	---

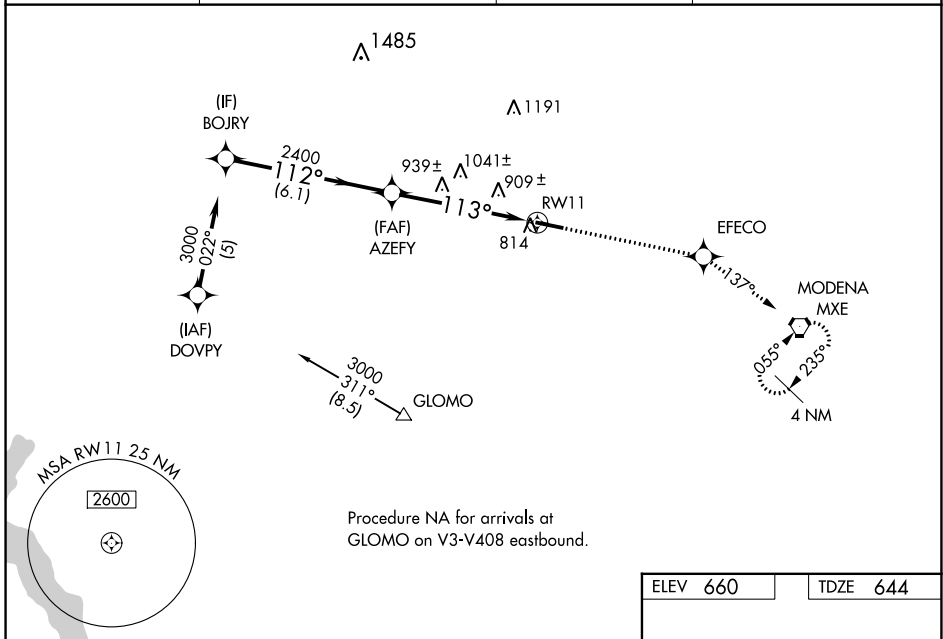
RNAV (GPS) RWY 11

CHESTER COUNTY G O CARLSON (MQS)

⚠ Baro-VNAV NA when using Heritage Fld altimeter setting. For uncompensated Baro-VNAV systems, LNAV/VNAV NA below -16°C (4°F) or above 47°C (116°F). DME/DME RNP-0.3 NA. Rwy 11 helicopter visibility reduction below 3/4 SM NA. When local altimeter setting not received, use Heritage Fld altimeter setting and increase all DA 98 feet and all MDA 100 feet, LPV visibility 1/2 mile all Cats, LNAV/VNAV visibility 1/2 mile all Cats, LNAV visibility Cats C and D 1/4 mile, and Circling visibility Cat C and D 1/4 mile.

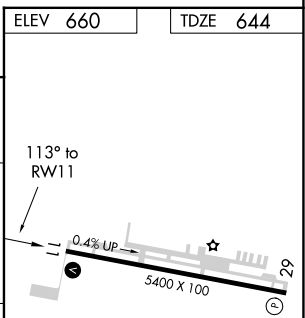
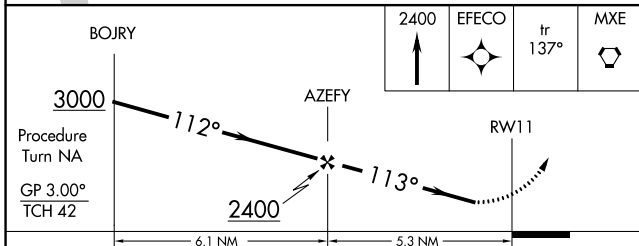
MISSED APPROACH:
Climb to 2400 direct EFECO and on 137° track to MXE VORTAC and hold.

AWOS-3 126.25	PHILADELPHIA APP CON 124.35 319.15	CLNC DEL 125.6	UNICOM 122.7 (CTAF) 0
-------------------------	--	--------------------------	---------------------------------



NE-4, 12 AUG 2021 to 09 SEP 2021

NE-4, 12 AUG 2021 to 09 SEP 2021



CATEGORY	A	B	C	D
LPV DA	955-1		311 (300-1)	
LNAV/VNAV DA	1274-2 1/4		630 (700-2 1/4)	
LNAV MDA	1200-1	556 (600-1)	1200-1 1/2 556 (600-1 1/2)	1200-1 3/4 556 (600-1 3/4)
CIRCLING	1200-1 540 (600-1)	1240-1 580 (600-1)	1280-1 3/4 620 (700-1 3/4)	1440-2 780 (800-2)