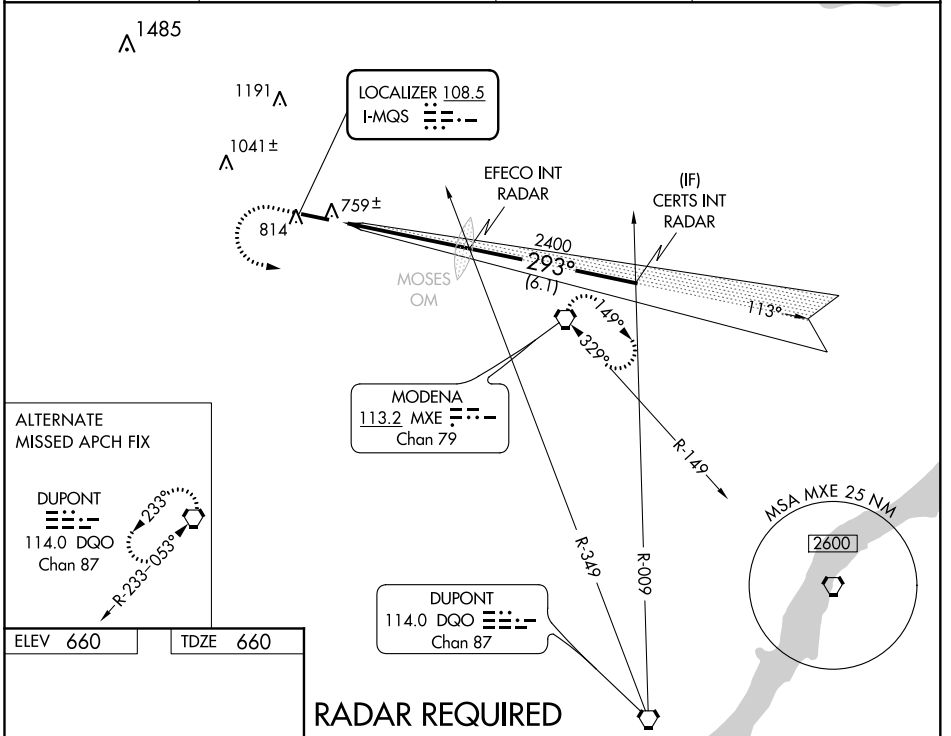


LOC I-MQS <b>108.5</b>	APP CRS <b>293°</b>	Rwy Idg TDZE Apt Elev	<b>5400</b> <b>660</b> <b>660</b>
---------------------------	------------------------	-----------------------------	---

**ILS or LOC RWY 29**  
CHESTER COUNTY G O CARLSON (MQS)

<p><b>⚠</b> Rwy 29 helicopter visibility reduction below ¾ SM NA. When local altimeter setting not received, use Heritage Fld altimeter setting and increase all DA 98 feet, and all MDA 100 feet, S-ILS 29 visibility ¼ mile all Cats, S-LOC 29 visibility Cats C and D ¼ mile, and Circling visibility Cat C and D ¼ mile.</p>		<p><b>MISSED APPROACH:</b> Climb to 1300 then climbing left turn to 2400 direct MXE VORTAC and hold.</p>	
AWOS-3 <b>126.25</b>	PHILADELPHIA APP CON <b>124.35 319.15</b>	CLNC DEL <b>125.6</b>	UNICOM <b>122.7 (CTAF) 0</b>

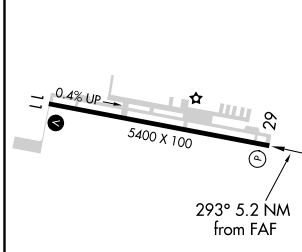


**ALTERNATE MISSED APCH FIX**

**DUPONT**  
114.0 DGO  
Chan 87

**R-233-053°**

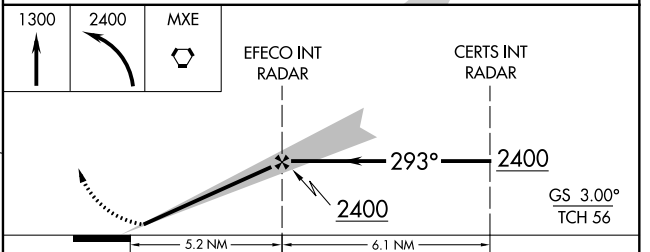
ELEV 660	TDZE 660
----------	----------



HIRL Rwy 11-29 0  
REIL Rwy 11-29 0

FAF to MAP 5.2 NM

Knots	60	90	120	150	180
Min:Sec	5:12	3:28	2:36	2:05	1:44



CATEGORY	A	B	C	D
S-ILS 29	919-1 259 (300-1)			
S-LOC 29	1040-1 380 (400-1)			1040-1¼ 380 (400-1¼)
CIRCLING	1140-1 480 (500-1)	1240-1 580 (600-1)	1280-1¾ 620 (700-1¾)	1440-2½ 780 (800-2½)

NE-4, 09 SEP 2021 to 07 OCT 2021

NE-4, 09 SEP 2021 to 07 OCT 2021