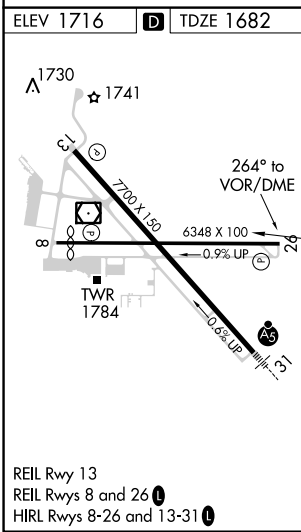
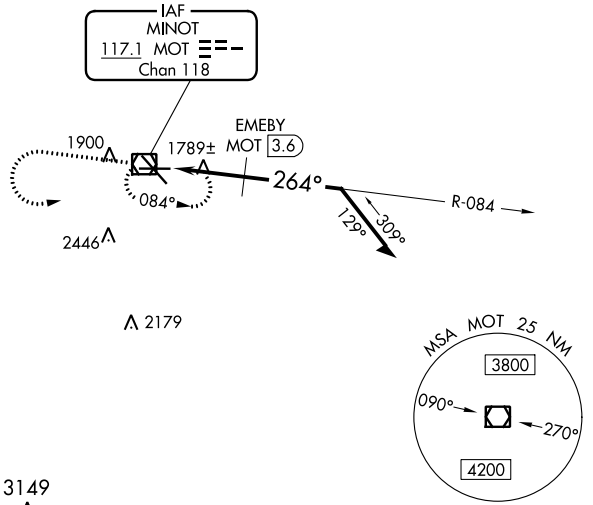


VOR/DME MOT 117.1 Chan 118	APP CRS 264°	Rwy Idg TDZE 1682 Apt Elev 1716
--	------------------------	---

VOR RWY 26

MINOT INTL (MOT)

		MISSED APPROACH: Climb to 3600 then left turn direct MOT VOR/DME and hold.		
ASOS 118.725	MINOT APP CON ★ 119.6 363.8	MAGIC CITY TOWER ★ 118.2 (CTAF) 251.125	GND CON 121.9	UNICOM 122.95



ELEV 1716	D	TDZE 1682	3149 ▲	
3600 ▲		MOT 	MOT VOR/DME 3500	
VGSI and descent angles not coincident (VGSI Angle 3.00/TCH 49).		MOT VOR/DME 3500	Remain within 10 NM 084° 3400 264° 2540 TCH 50 2.91° 1 NM 1.6 NM	
CATEGORY	A	B	C	D
S-26	2540-1 858 (900-1)	2540-1¼ 858 (900-1¼)	2540-2½ 858 (900-2½)	2540-2¾ 858 (900-2¾)
CIRCLING	2540-1 824 (900-1)	2540-1¼ 824 (900-1¼)	2800-3	1084 (1100-3)
EMEBY FIX MINIMUMS				
S-26	2040-1 358 (400-1)			2040-1¼ 358 (400-1¼)
CIRCLING	2200-1 484 (500-1)	2240-1 524 (600-1)	2800-3	1084 (1100-3)

NC-1, 02 DEC 2021 to 30 DEC 2021

NC-1, 02 DEC 2021 to 30 DEC 2021