

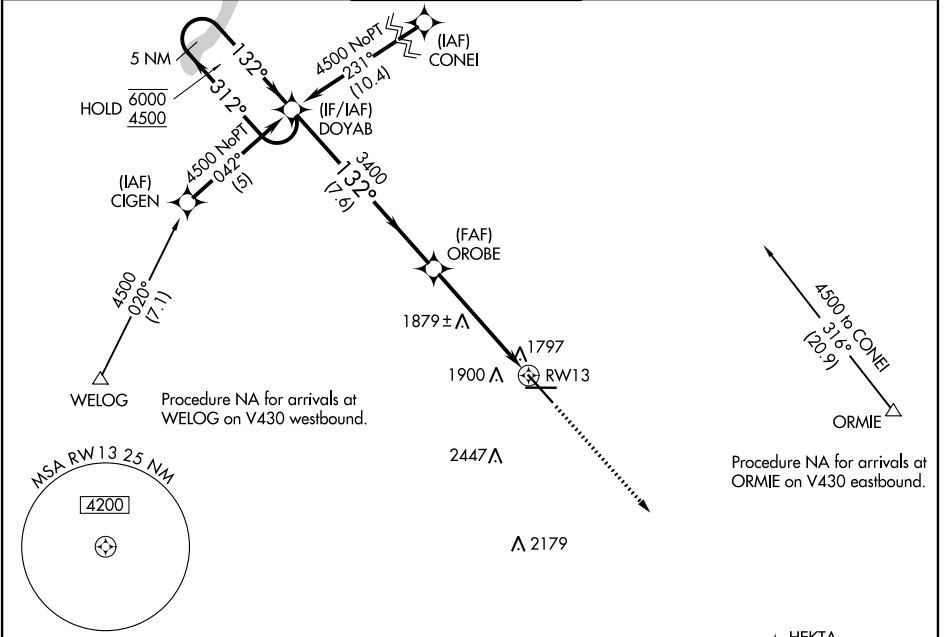
WAAS CH 70399 W13A	APP CRS 132°	Rwy Idg TDZE Apt Elev	7700 1702 1716
---------------------------------	------------------------	-----------------------------	---

RNAV (GPS) RWY 13

MINOT INTL (MOT)

RNP APCH.	MISSED APPROACH: Climb to 4000 direct HEKTA and hold.
▼ For uncompensated Baro-VNAV systems, LNAV/VNAV NA below -18°C or above 54°C.	

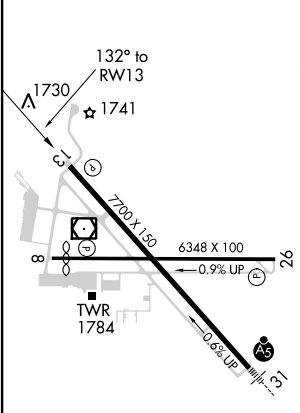
ASOS 118.725	MINOT APP CON * 119.6 363.8	MAGIC CITY TOWER * 118.2 (CTAF) 251.125	GND CON 121.9	UNICOM 122.95
------------------------	---------------------------------------	---	-------------------------	-------------------------



NC-1, 09 SEP 2021 to 07 OCT 2021

NC-1, 09 SEP 2021 to 07 OCT 2021

ELEV 1716	D	TDZE 1702
-----------	----------	-----------



	3149	3147	5 NM	HEKTA
	5 NM Holding Pattern DOYAB		4000	HEKTA
	6000	4500	312°	132°
			7.32°	3400
			3400	
			*1.2 NM to RW13	*LNAV only.
			7.6 NM	3.9 NM
			1.2	
GP 3.00° TCH 49				
CATEGORY	A	B	C	D
LPV DA	2021-1 319 (400-1)			
LNAV/VNAV DA	2181-1¼ 479 (500-1¼)			
LNAV MDA	2140-1	438 (500-1)	2140-1¼ 438 (500-1¼)	2140-1½ 438 (500-1½)
CIRCLING	2200-1	484 (500-1)	2280-1½ 564 (600-1½)	2280-2 564 (600-2)