

VOR/DME UBG <b>117.4</b> Chan <b>121</b>	APP CRS <b>014°</b>	Rwy Idg TDZE Apt Elev <b>N/A</b> <b>N/A</b> <b>163</b>
--	------------------------	---

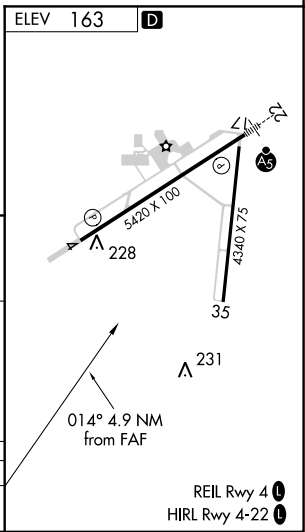
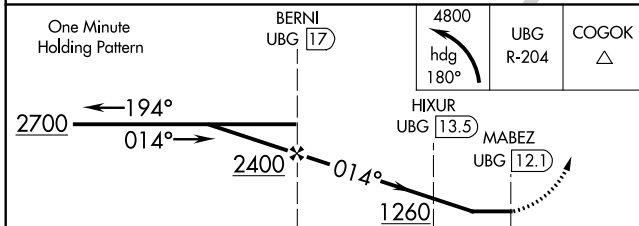
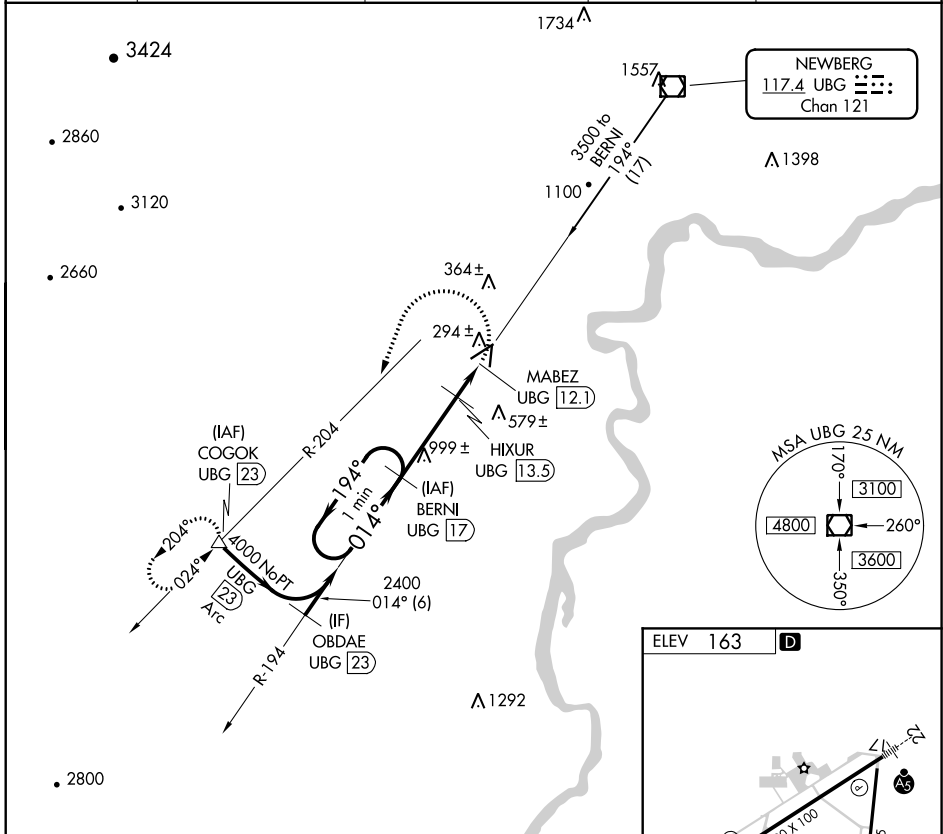
# VOR/DME-B

MC MINNVILLE MUNI (MMV)

**⚠** When local altimeter setting not received use Aurora State altimeter setting and increase all MDA 60 feet and all visibility 1/4 mile.

**⚠** MISSED APPROACH: Climbing left turn to 4800 via heading 180° and UBG VOR/DME R-204 to COGOK/UBG 23 DME and hold, continue climb-in-hold to 4800. When authorized by ATC, climb-in-hold to 6000.

ASOS <b>135.675</b>	PORTLAND APP CON <b>126.0 284.6</b> (NORTH)	SEATTLE CENTER <b>125.8 291.7</b> (SOUTH)	CLNC DEL <b>118.35</b>	UNICOM <b>123.0</b> (CTAF) <b>📻</b>
------------------------	--	--	---------------------------	--



CATEGORY	A	B	C	D
CIRCLING	840-1	677 (700-1)	840-2 677 (700-2)	880-2 1/4 717 (800-2 1/4)

NW-1, 22 APR 2021 to 20 MAY 2021

NW-1, 22 APR 2021 to 20 MAY 2021