

APP CRS	Rwy ldg	<b>5998</b>
<b>229°</b>	TDZE	<b>183</b>
	Apt Elev	<b>187</b>

# RNAV (RNP) Y RWY 23

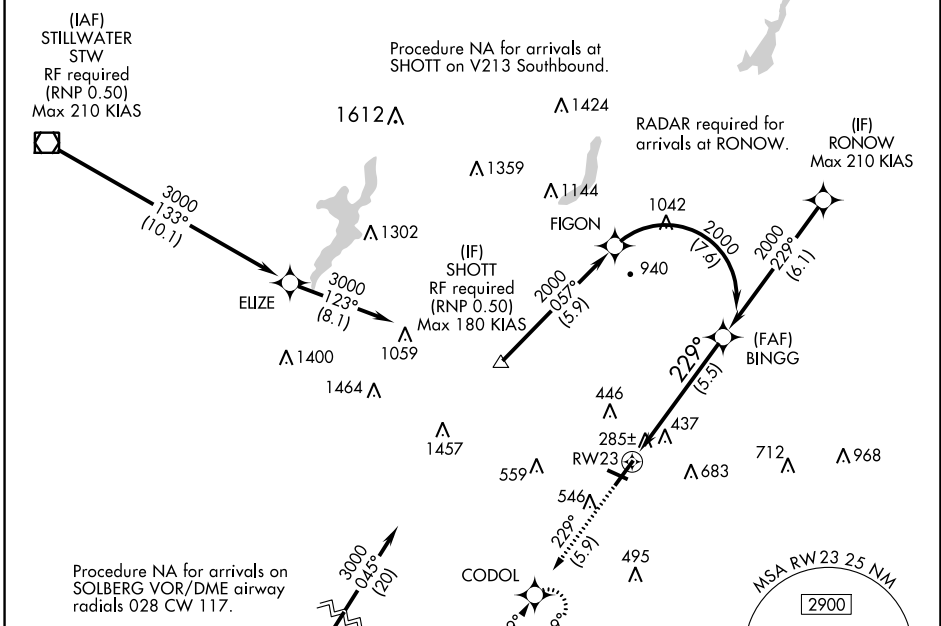
MORRISTOWN MUNI (MMU)

For uncompensated Baro-VNAV systems, procedure NA below -15°C (5°F) or above 48°C (118°F). When local altimeter setting not received, procedure NA. GPS required. For inoperative MALS, increase RNP 0.11 all Cats visibility to 1¼ mile and RNP 0.30 all Cats visibility to 2 miles. Visibility reduction by helicopters NA.

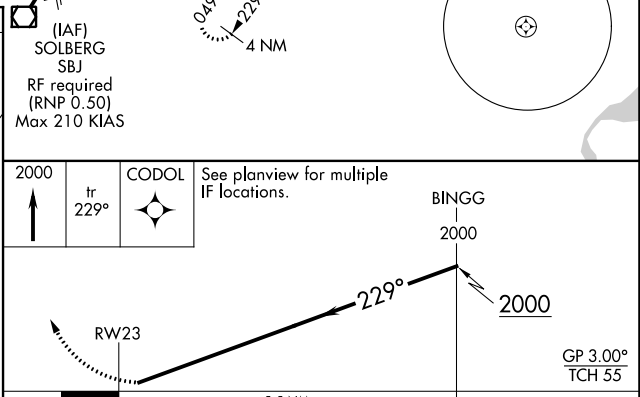
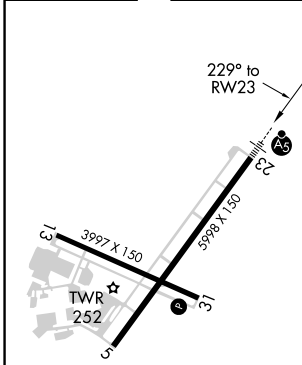


MISSED APPROACH: Climb to 2000 on track 229° to CODOL and hold.

ATIS <b>124.25</b>	NEW YORK APP CON <b>127.6 379.9</b>	MORRISTOWN TOWER* <b>118.1 (CTAF) 353.9</b>	GND CON <b>134.2</b>	CLNC DEL <b>128.6</b>
-----------------------	--	--	-------------------------	--------------------------



ELEV 187	TDZE 183
----------	----------



CATEGORY	A	B	C	D
RNP 0.11 DA	553-¾ 370 (400-¾)			
RNP 0.30 DA	788-1½ 605 (700-1½)			

**AUTHORIZATION REQUIRED**

NE-2, 16 JUL 2020 to 13 AUG 2020

NE-2, 16 JUL 2020 to 13 AUG 2020