

LOC I-MKT 108.7	APP CRS 331°	Rwy Idg 6600 TDZE 1021 Apt Elev 1021
---------------------------	------------------------	---

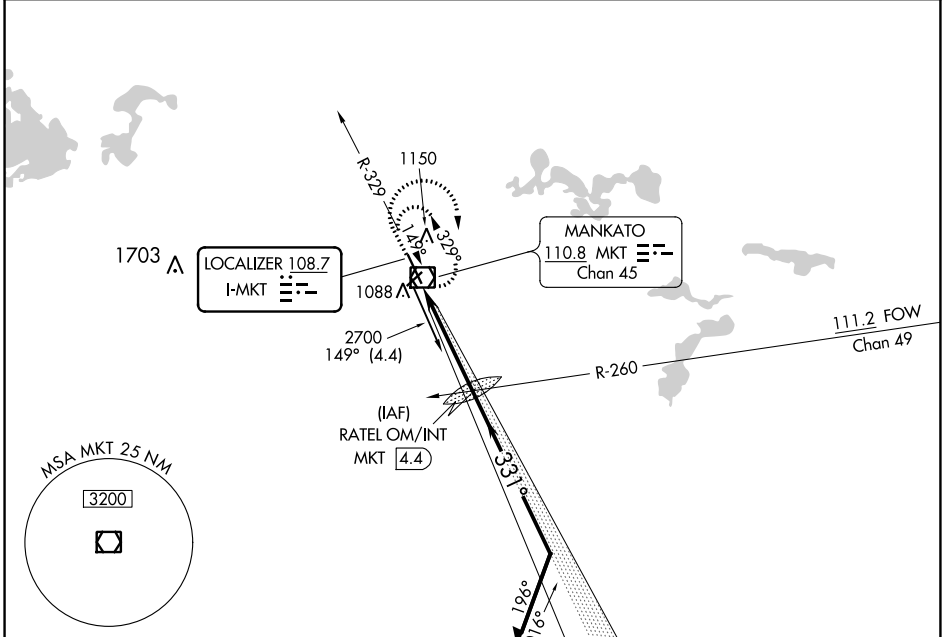
COPTER ILS or LOC RWY 33

MANKATO RGNL (MKT)

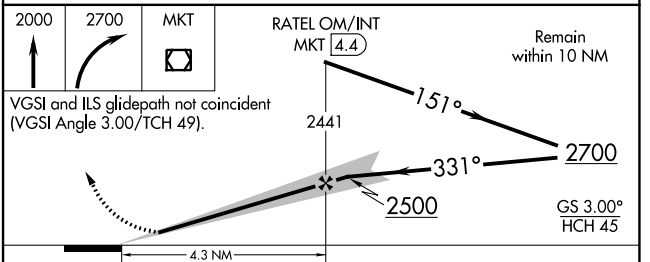
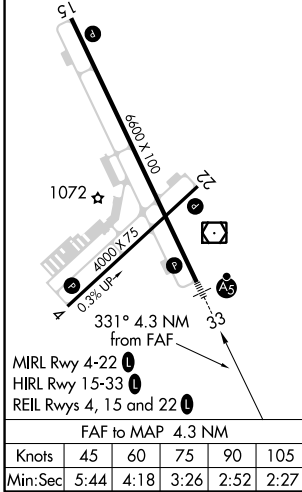
NA For inoperative MALSRS increase visibility to ½ mile. When local altimeter setting not received, use Waseca altimeter setting; increase DA to 1278 feet; increase MDA 60 feet.

MALSRS MISSED APPROACH: Climb to 2000 then climbing right turn to 2700 direct MKT VOR/DME and hold.

AWOS-3PT 118.175	MINNEAPOLIS CENTER 135.0 306.9	UNICOM 122.725 (CTAF)
----------------------------	--	---------------------------------



ELEV 1021	TDZE 1021
-----------	-----------



CATEGORY	COPTER	B	C	D
S-ILS 33	1221-¼ 200 (200-¼)		NA	
S-LOC 33	1420-¼ 399 (400-¼)		NA	
CIRCLING	NA			

NC-1, 04 NOV 2021 to 02 DEC 2021

NC-1, 04 NOV 2021 to 02 DEC 2021