

WAAS CH 82000 W14A	APP CRS 146°	Rwy Idg TDZE Apt Elev	5058 81 85
--	------------------------	-----------------------------	---------------------------------------

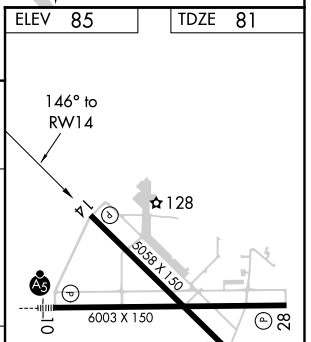
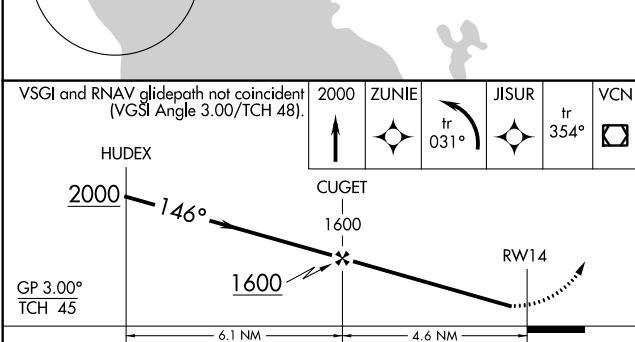
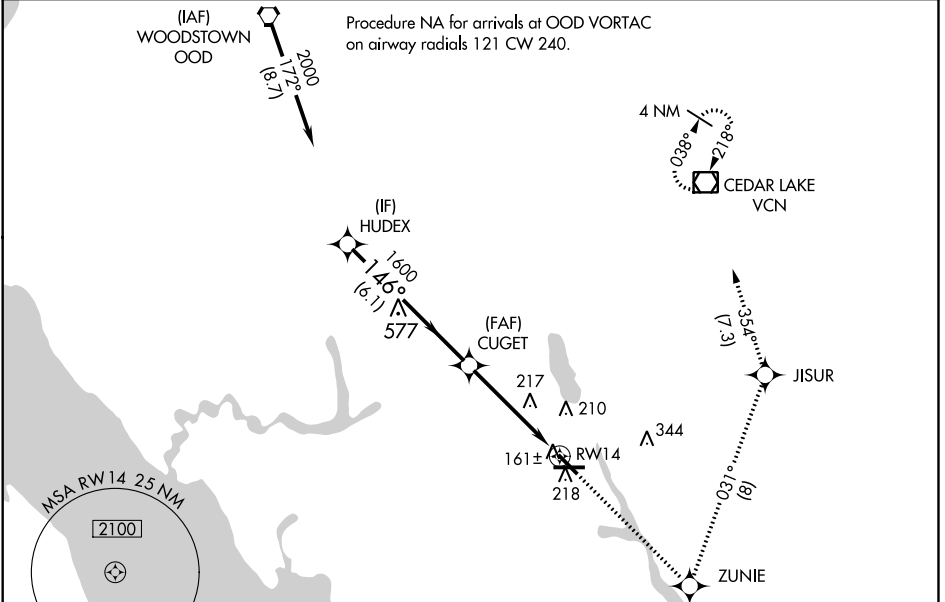
RNAV (GPS) RWY 14

MILLVILLE MUNI (MIV)

⚠ NA When Rwy 14 VGSI inop, Straight-in and Circling minimums NA at night. Baro-VNAV NA when using Woodbine Muni altimeter setting. For uncompensated Baro-VNAV systems, procedure NA below -15° C (5°F) or above 48°C (118°F). Circling Rwy 32 NA at night. Rwy 14 helicopter visibility reduction below 1 SM NA. DME/DME RNP-0.3 NA.

MISSED APPROACH: Climb to 2000 direct ZUNIE and left turn on track 031° to JISUR and on track 354° to VCN VOR/DME and hold.

ASOS 119.6	ATLANTIC CITY APP CON 124.6 327.125	UNICOM 123.0 (CTAF) 0
----------------------	---	---------------------------------



CATEGORY	A	B	C	D
LPV DA	377-1 296 (300-1)			
RNAV/VNAV DA	550-1¾ 469 (500-1¼)			
RNAV MDA	480-1 399 (400-1)	480-1½ 399 (400-1½)	480-1¼ 399 (400-1¼)	
CIRCLING	560-1 475 (500-1)	560-1½ 475 (500-1½)	640-2 555 (600-2)	

MIRL Rwy 10-28 and 14-32 0

NE-2, 30 JAN 2020 to 27 FEB 2020

NE-2, 30 JAN 2020 to 27 FEB 2020