

WAAS CH <b>58214</b> <b>W06A</b>	APP CRS <b>057°</b>	Rwy Idg TDZE Apt Elev	<b>7208</b> <b>224</b> <b>266</b>
--	------------------------	-----------------------------	---

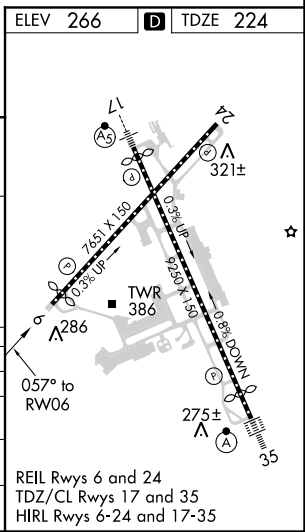
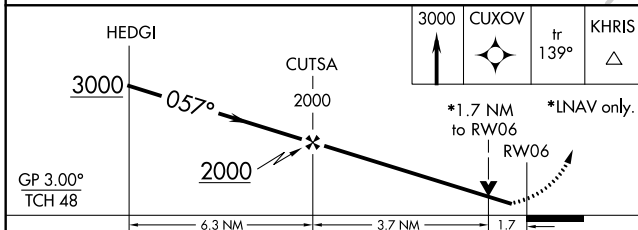
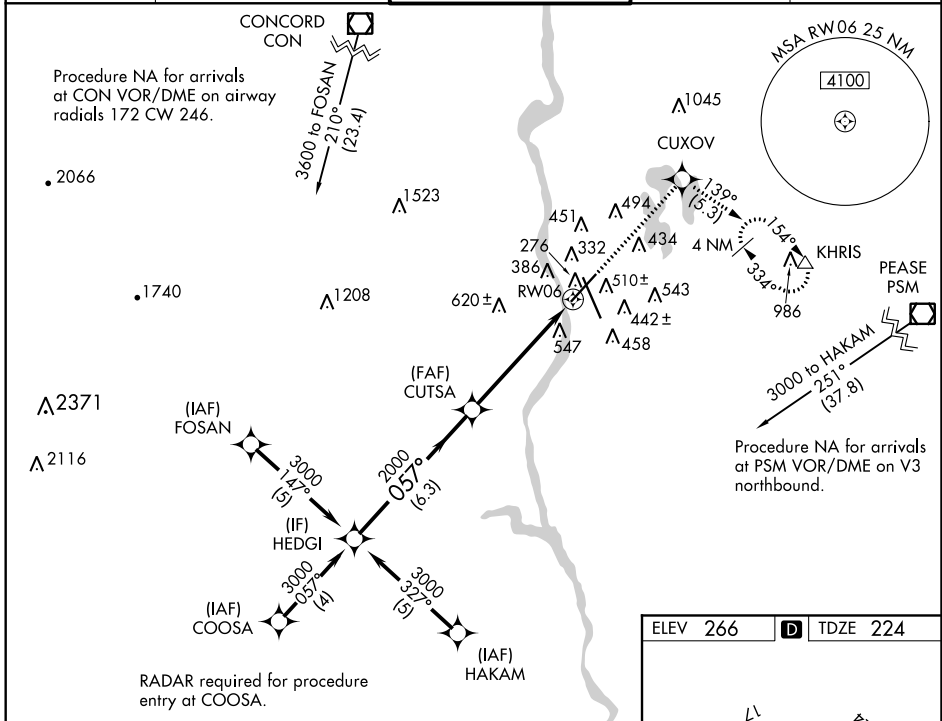
# RNAV (GPS) RWY 6

MANCHESTER (MHT)

**▼** For uncompensated Baro-VNAV systems, LNAV/VNAV NA below -15°C (5°F) or above 48°C (118°F). Rwy 6 helicopter visibility reduction below ¾ SM NA. DME/DME RNP-0.3 NA.  
**▲** When local altimeter setting not received, use Boire Field altimeter setting and increase all DA 32 feet and all MDA 40 feet; increase LNAV/VNAV visibility ¼ mile all Cats, LNAV Cat C and D visibilities ¼ mile, and Circling Cat D visibility ¼ mile. VDP and Baro-VNAV NA when using Boire Field altimeter setting.

**MISSED APPROACH:** Climb to 3000 direct CUXOV and on track 139° to KHRIS and hold, continue climb-in-hold to 3000.

ATIS <b>119.55</b>	BOSTON APP CON <b>124.9 269.075</b>	MANCHESTER TOWER <b>121.3 239.025</b>	GND CON <b>121.9</b>	CLNC DEL <b>135.9</b>
-----------------------	--	--	-------------------------	--------------------------



CATEGORY	A	B	C	D
LPV DA	493/50 269 (300-1)			
LNAV/ VNAV DA	871-2¼ 647 (700-2¼)			
LNAV MDA	800/50 576 (600-1)	800-1½ 576 (600-1½)	800-1¾ 576 (600-1¾)	
CIRCLING	880-1 614 (700-1)	880-1¾ 614 (700-1¾)	900-2 634 (700-2)	

NE-1, 01 MAR 2018 to 29 MAR 2018

NE-1, 01 MAR 2018 to 29 MAR 2018