

LOC/DME I-MHT 109.1 Chan 28	APP CRS 352°	Rwy Idg 7650	TDZE 265
		Apt Elev 266	

ILS or LOC RWY 35

MANCHESTER (MHT)

From SHOWZ: RNAV 1-DME/DME/IRU or GPS required for procedure entry. DME required.

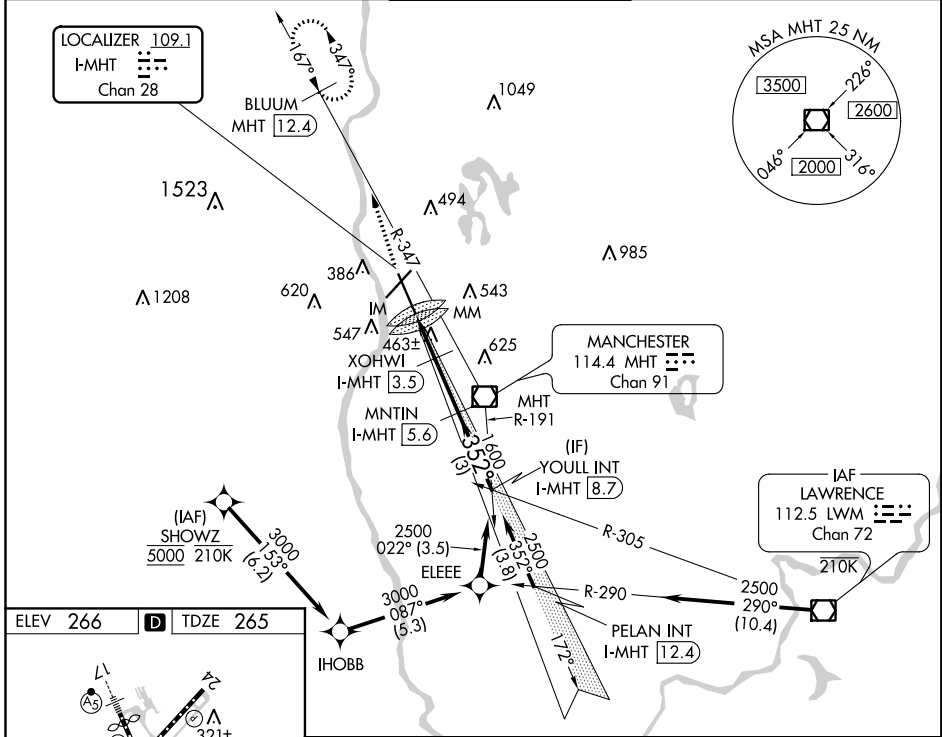
ALSF-2

MISSED APPROACH: Climb to 3000 on heading 355° and MHT VOR/DME R-347 to BLUUM/MHT 12.4 DME and hold, continue climb-in-hold to 3000.

▼ Rwy 35 helicopter visibility reduction below RVR 4000 NA.
▲ For inop ALS, increase S-LOC 35 Cats A/B visibility to RVR 5500.



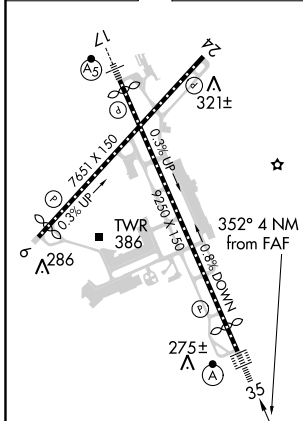
ATIS 119.55	BOSTON APP CON 124.9 269.075	MANCHESTER TOWER 121.3 239.025	GND CON 121.9	CLNC DEL 135.9
-----------------------	--	--	-------------------------	--------------------------



NE-1, 20 JUN 2019 to 18 JUL 2019

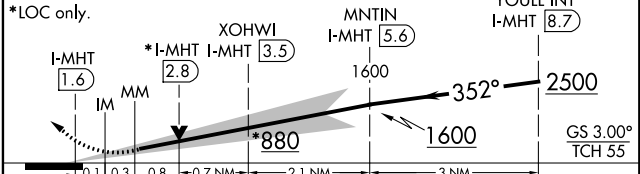
NE-1, 20 JUN 2019 to 18 JUL 2019

ELEV 266	D	TDZE 265
----------	----------	----------



REIL Rws 6 and 24
TDZ/CL Rwy 17 and 35
HIRL Rws 6-24 and 17-35

3000 MHT R-347 BLUUM MHT 12.4
 VGSI and ILS glidepath not coincident (VGSI Angle 3.00/TCH 68).
 Use I-MHT localizer DME when on LOC course.



CATEGORY	A	B	C	D
S-ILS 35	465/18 200 (200-½)			
S-LOC 35	720/40	455 (500-¾)	720/45	455 (500-¾)
C CIRCLING	880-1	614 (700-1)	980-2 714 (800-2)	1100-2¾ 834 (900-2¾)