

WAAS CH <b>45801</b> <b>W02A</b>	APP CRS <b>026°</b>	Rwy Idg TDZE Apt Elev	<b>5000</b> <b>949</b> <b>957</b>
--	------------------------	-----------------------------	---

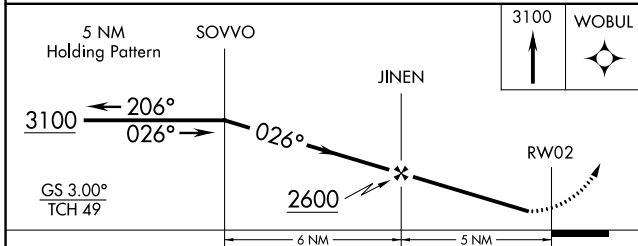
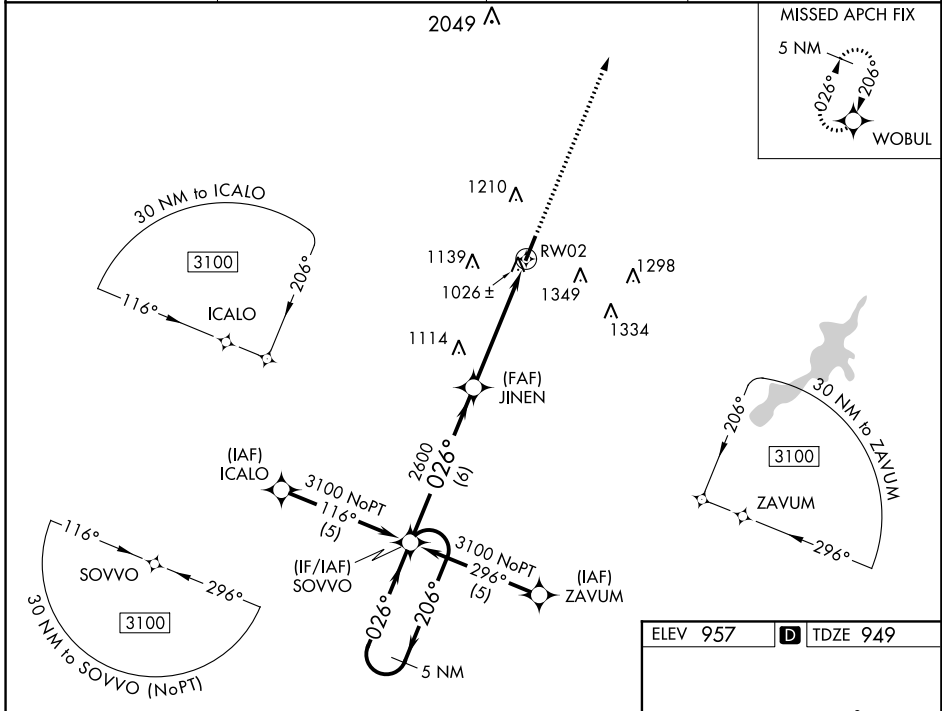
# RNAV (GPS) RWY 2

DAYTON-WRIGHT BROTHERS (MGY)

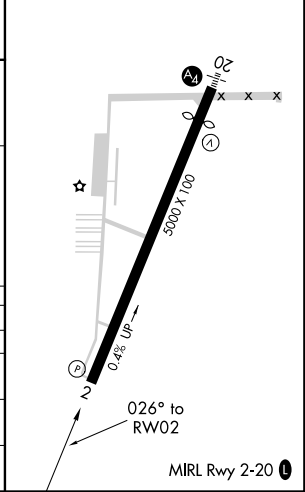
**Baro-VNAV NA** when using James M Cox Dayton Intl altimeter setting. For uncompensated Baro-VNAV systems, LNAV/VNAV NA below -16°C (4°F) or above 47°C (116°F). DME/DME RNP-0.3 NA. Visibility reduction for helicopters NA. If local altimeter setting not received, use James M Cox Dayton Intl altimeter setting and increase all DAs/MDAs 60 feet.

**MISSED APPROACH:** Climb to 3100 direct WOBUL and hold.

ASOS <b>118.375</b>	COLUMBUS APP CON <b>118.85 269.275</b>	CLNC DEL <b>119.4</b>	UNICOM <b>122.8</b> (CTAF) <b>U</b>
------------------------	---	--------------------------	--



ELEV 957	<b>D</b> TDZE 949
----------	-------------------



CATEGORY	A	B	C	D
LPV DA	1214-1 265 (300-1)			
LNAV/VNAV DA	1299-1¼ 350 (400-1¼)			
LNAV MDA	1420-1 471 (500-1)	1420-1¼ 471 (500-1¼)	1420-1½ 471 (500-1½)	1420-1½ 471 (500-1½)
CIRCLING	1480-1¼ 523 (600-1¼)	1520-1½ 563 (600-1½)	1660-2¼ 703 (800-2¼)	