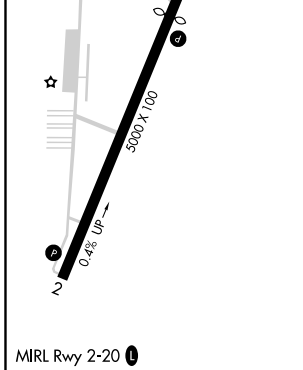
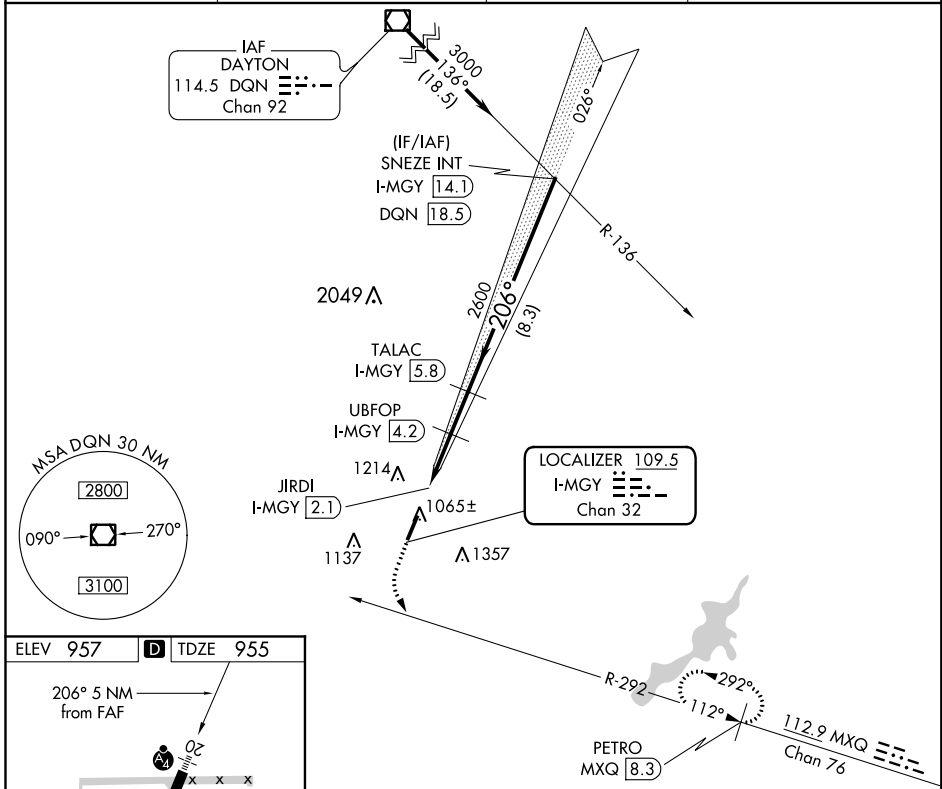


LOC/DME I-MGY <b>109.5</b> Chan <b>32</b>	APP CRS <b>206°</b>	Rwy Idg <b>4410</b> TDZE <b>955</b> Apt Elev <b>957</b>
---	------------------------	---

**LOC RWY 20**  
DAYTON-WRIGHT BROTHERS (MGY)

DME required.	MALS	MISSED APPROACH: Climb to 1600 then climbing left turn to 3000 on heading 118° and MXQ VOR/DME R-292 to PETRO MXQ 8.3 DME and hold.
Rwy 20 helicopter visibility reduction below 3/4 SM NA. Inop table does not apply.		

ASOS <b>118.375</b>	COLUMBUS APP CON <b>118.85 269.275</b>	CLNC DEL <b>119.4</b>	UNICOM <b>122.8 (CTAF) 0</b>
------------------------	---	--------------------------	---------------------------------



1600	3000	MXQ R-292	PETRO MXQ 8.3	TALAC I-MGY 5.8	SNEZE INT I-MGY 14.1
$\uparrow$	hdg 118°				3000
		UBPOP I-MGY 4.2	JIRDI I-MGY 2.1	TCH 40	2600
		2040	2600	8.3 NM	
	1.2	2.1 NM	1.6 NM	B	C
CATEGORY	A	B	C	D	
S-LOC 20		1320-1 1/2	365 (400-1 1/2)		
<b>C</b> CIRCLING	1440-1 1/2 483 (500-1 1/2)	1520-1 1/2 563 (600-1 1/2)	1660-2 703 (800-2)	1660-2 1/4 703 (800-2 1/4)	

EC-2, 02 DEC 2021 to 30 DEC 2021

EC-2, 02 DEC 2021 to 30 DEC 2021