

# VANZE TWO ARRIVAL (RNAV)

SE-1, 09 SEP 2021 to 07 OCT 2021

**GRAMM TRANSITION (GRAMM.VANZE2):**  
**TALLO TRANSITION (TALLO.VANZE2):**  
**WASER TRANSITION (WASER.VANZE2):**

**LANDING SOUTH: RWYS 18L/18C/18R:** From over VANZE on track 287° to MASHH, cross MASHH at/below 16000 and at/above 14000 at 280K, then on track 286° to HJ VORTAC, then on track 303° to LARUE, cross LARUE at/below 12000 and at/above 10000 at 250K, then on track 302° to FLOND, cross FLOND at/below 11000 and at/above 9000, then on track 302° to SUUZE, then on track 360° to MEBEE, cross MEBEE at/below 10000 and at/above 8000 at 210K, then on track 360° to HADSO, cross HADSO at/below 8000 and at/above 6000, then on track 360° to HEXIN, cross HEXIN at 3000, then on track 360°. Expect radar vectors to final approach course.

**LANDING NORTH: RWYS 36L/36C/36R/9/27:** From over VANZE on track 284° to FASOP, cross FASOP at 10000 at 230K, then on track 284°. Expect radar vectors to final approach course.

NOTE: Descend via Mach number until transition to 290K.

NOTE: Radar required.

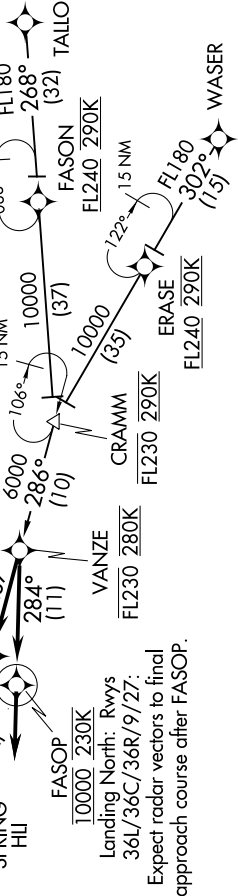
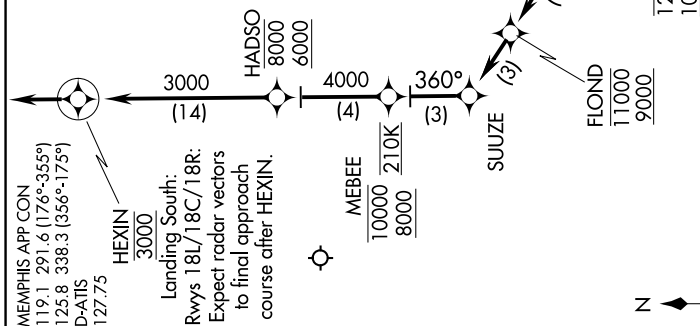
NOTE: RNAV 1.

NOTE: DME/DME/IRU or GPS required.

NOTE: Turbojet aircraft only.

NOTE: Landing South indicates Rwys 18L/18C/18R.  
Landing North indicates Rwys 36L/36C/36R/9/27.

NOTE: Expect to receive landing direction (North/South) and "Descend via" clearance from Memphis Center. Memphis approach will assign landing runway.



NOTE: Chart not to scale.

# (VANZE.VANZE2) 01FEB18

SE-1, 09 SEP 2021 to 07 OCT 2021