

MONAA THREE ARRIVAL (RNAV)

SE-1, 10 OCT 2019 to 07 NOV 2019

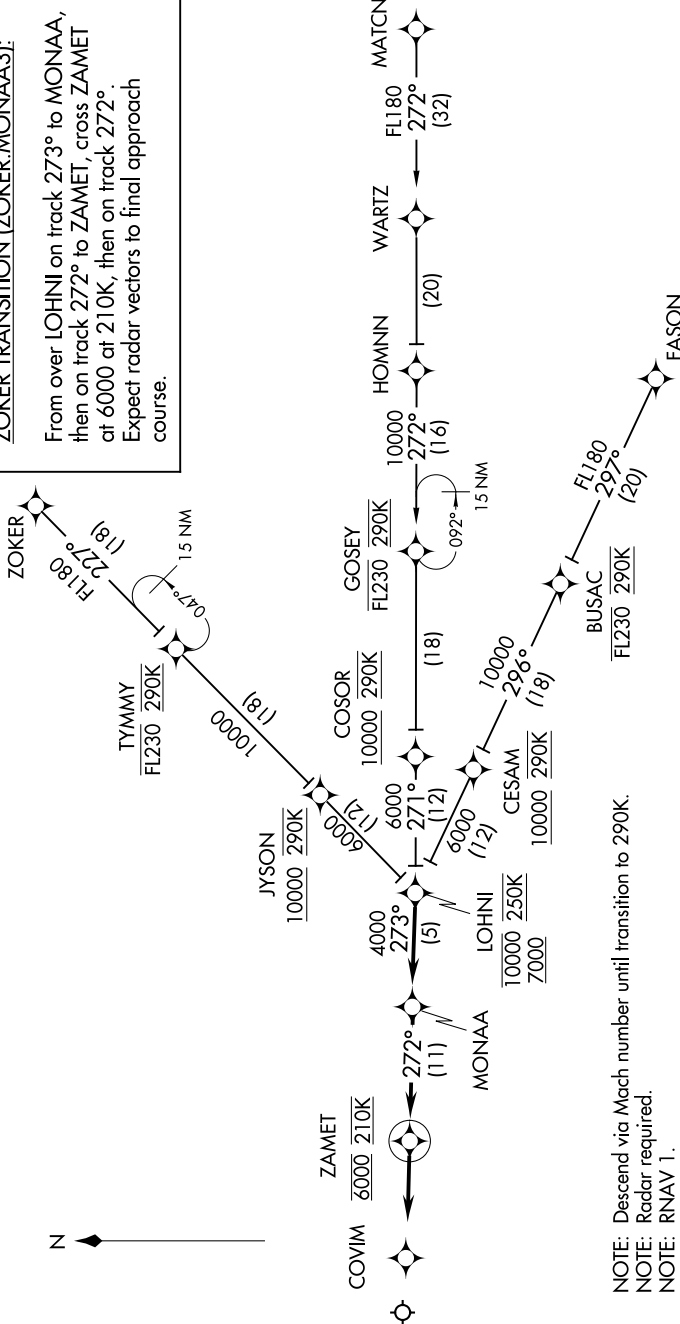
MEMPHIS APP CON
119.1 291.6 (176°-355°)
125.8 338.3 (356°-175°)
D-ATIS
127.75



ARRIVAL ROUTE DESCRIPTION

FASON TRANSITION (FASON.MONAA3):
HOMNN TRANSITION (HOMNN.MONAA3):
MATCHN TRANSITION (MATCHN.MONAA3):
ZOKER TRANSITION (ZOKER.MONAA3):

From over LOHNI on track 273° to MONAA,
then on track 272° to ZAMET, cross ZAMET
at 6000 at 210K, then on track 272°.
Expect radar vectors to final approach
course.



- NOTE: Descend via Mach number until transition to 290K.
- NOTE: Radar required.
- NOTE: RNAV 1.
- NOTE: DME/DME/IRU or GPS required.
- NOTE: Turbojet aircraft only.
- NOTE: Assigned by ATC only.

NOTE: Chart not to scale.

SE-1, 10 OCT 2019 to 07 NOV 2019