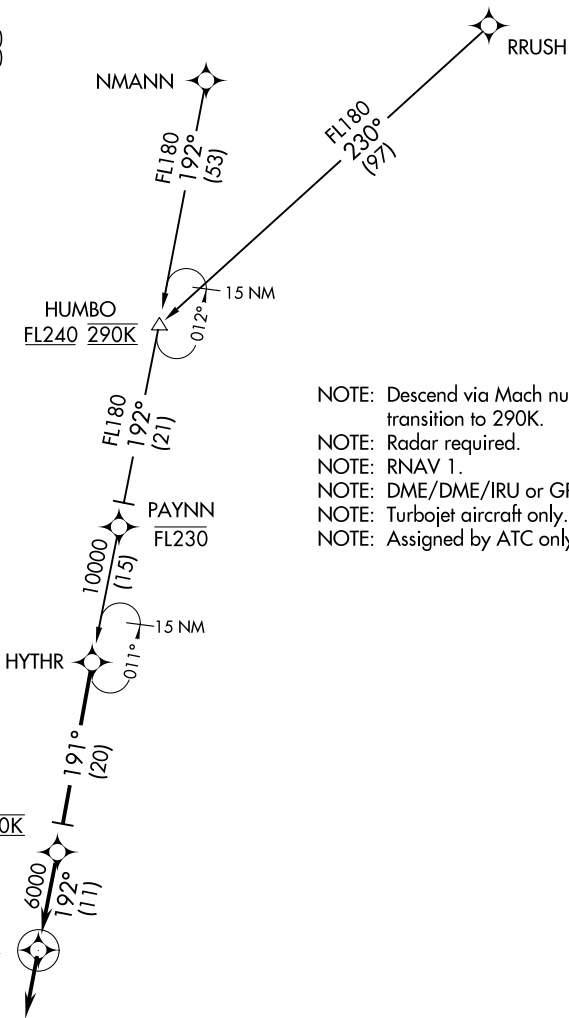


# HYTHR TWO ARRIVAL (RNAV)

MEMPHIS APP CON  
119.1 291.6 (176°-355°)  
125.8 338.3 (356°-175°)  
D-ATIS  
127.75



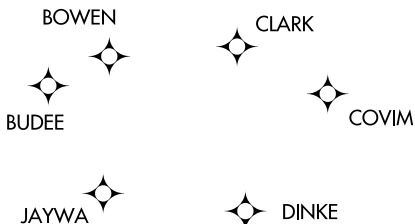
- NOTE: Descend via Mach number until transition to 290K.
- NOTE: Radar required.
- NOTE: RNAV 1.
- NOTE: DME/DME/IRU or GPS required.
- NOTE: Turbojet aircraft only.
- NOTE: Assigned by ATC only.

NOTE: Chart not to scale.

### ARRIVAL ROUTE DESCRIPTION

HUMBO TRANSITION (HUMBO.HYTHR2):  
NMANN TRANSITION (NMANN.HYTHR2):  
RRUSH TRANSITION (RRUSH.HYTHR2):

From over HYTHR on track 191° to ROBYE, cross ROBYE at 10000 at 250K, then on track 192° to ASSUR, then on track 192°. Expect radar vectors to final approach course.



SE-1, 02 DEC 2021 to 30 DEC 2021

SE-1, 02 DEC 2021 to 30 DEC 2021