

WAAS CH 65907 W36A	APP CRS 360°	Rwy Idg TDZE Apt Elev	9320 321 341
--	------------------------	-----------------------------	---

RNAV (GPS) RWY 36L

MEMPHIS INTL(MEM)

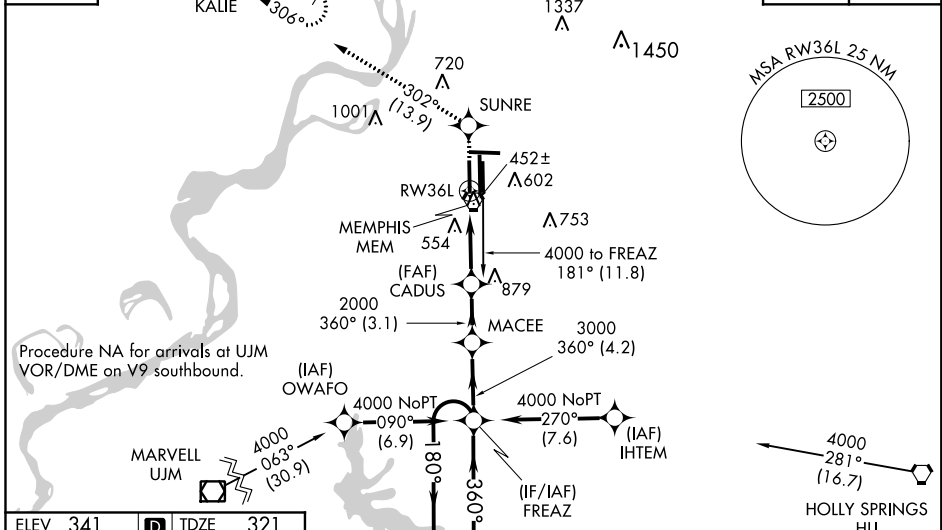
▼ For uncompensated Baro-VNAV systems, LNAV/VNAV NA below -15°C (5°F) or above 48°C (118°F). Simultaneous approach authorized. DME/DME RNP-0.3 NA. LNAV procedure NA during simultaneous operations. Use of FD or AP required during simultaneous operations.

ALSF-2

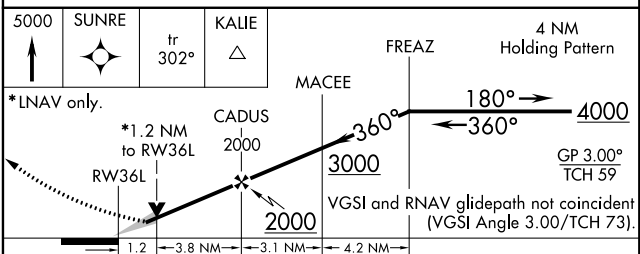
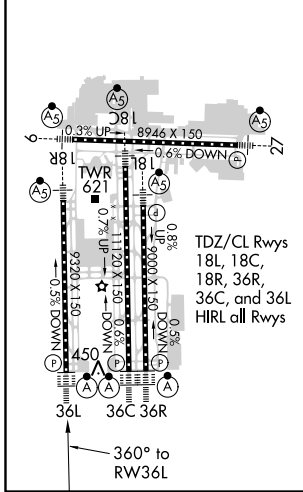
MISSED APPROACH: Climb to 5000 direct SUNRE and on track 302° to KALIE and hold, continue climb-in-hold to 5000.

MEMPHIS APP CON 119.1 291.6 (176°-355°) 125.8 338.3 (356°-175°)	MEMPHIS TOWER (Rwy 9-27) 118.3 257.8 (Rwys 18C-36C, 18L-36R) 119.7 257.8 (Rwy 18R-36L) 128.425 257.8	GND CON (Rwy 9-27) 121.0 379.2 (Rwys 18C-36C, 18L-36R) 121.9 379.2 (Rwy 18R-36L) 121.65 379.2
---	--	---

D-ATIS 127.75	CINC DEL 125.2	CPDLC
-------------------------	--------------------------	-------



ELEV 341	D	TDZE 321
----------	----------	----------



CATEGORY	A	B	C	D
LPV DA		673/40	352 (400-¾)	
LNAV/VNAV DA		760/50	439 (500-1)	
LNAV MDA	780/24	459 (500-½)	780/40 459 (500-¾)	780/50 459 (500-1)
C CIRCLING	940-1	599 (600-1)	940-1½ 599 (600-1½)	1020-2¼ 679 (700-2¼)

SE-1, 09 SEP 2021 to 07 OCT 2021

SE-1, 09 SEP 2021 to 07 OCT 2021