

WAAS CH 40407 W36B	APP CRS 360°	Rwy Idg TDZE 341 Apt Elev 341	10715
--	------------------------	---	--------------

RNAV (GPS) RWY 36C

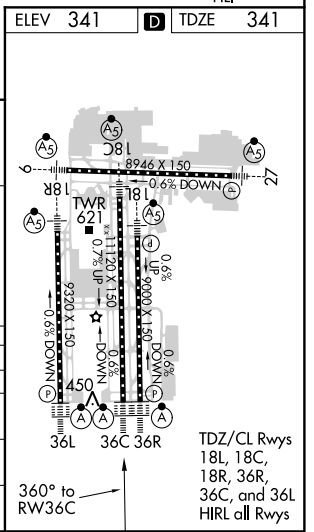
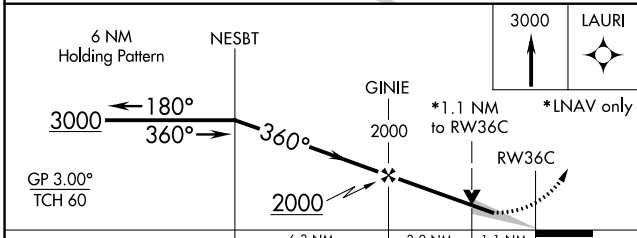
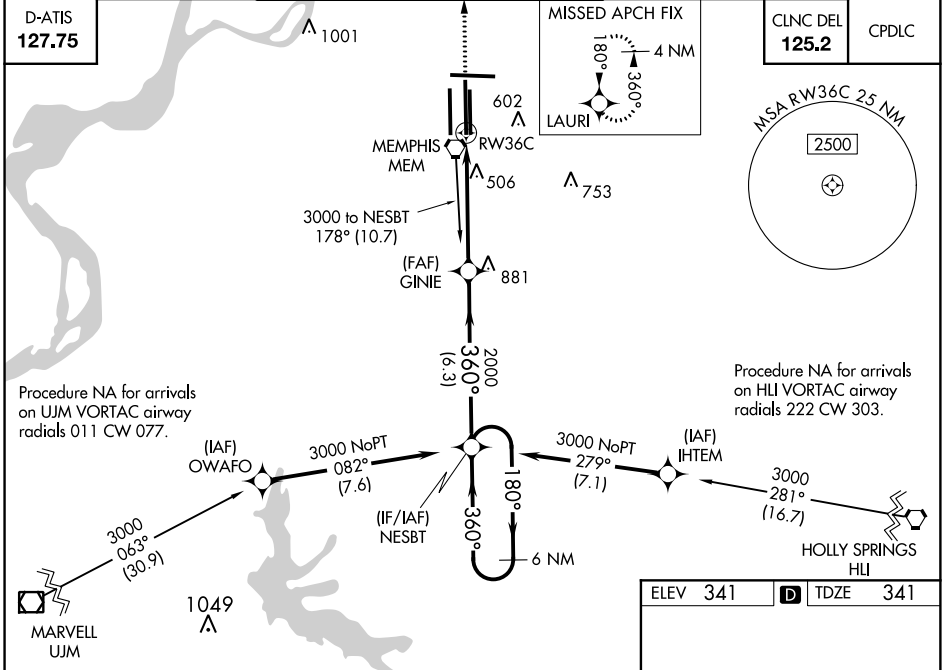
MEMPHIS INTL (MEM)

⚠ For uncompensated Baro-VNAV systems, LNAV/VNAV NA below -15°C (5°F) or above 48°C (118°F). Simultaneous approach authorized. DME/DME RNP-0.3 NA. For inop ALS increase LPV all Cats visibility to RVR 5000, increase LNAV Cat D visibility to RVR 6000. LNAV procedure NA during simultaneous operations. Use of FD or AP required during simultaneous operations.

ALS-F-2

MISSED APPROACH: Climb to 3000 direct LAURI and hold.

MEMPHIS APP CON		MEMPHIS TOWER		GND CON	
119.1	291.6 (176°-355°)	(Rwy 9-27) 118.3	257.8	(Rwy 9-27) 121.0	379.2
125.8	338.3 (356°-175°)	(Rwys 18C-36C, 18L-36R) 119.7	257.8	(Rwys 18C-36C, 18L-36R) 121.9	379.2
		(Rwy 18R-36L) 128.425	257.8	(Rwy 18R-36L) 121.65	379.2



CATEGORY	A	B	C	D
LPV DA		665/24	324 (400-1/2)	
LNAV/VNAV DA		765/50	424 (500-1)	
LNAV MDA	760/24 419 (500-1/2)	760/40 419 (500-3/4)	760/50 419 (500-1)	
CIRCLING	940-1 599 (600-1)	940-1 1/2 599 (600-1 1/2)	1020-2 1/4 679 (700-2 1/4)	

SE-1, 21 JUN 2018 to 19 JUL 2018

SE-1, 21 JUN 2018 to 19 JUL 2018