

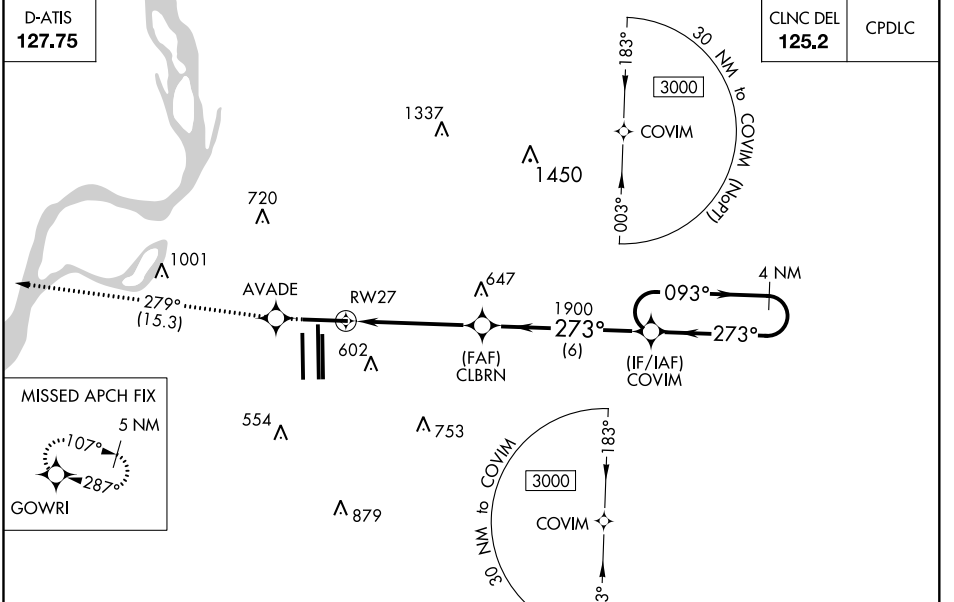
WAAS CH <b>93607</b> <b>W27A</b>	APP CRS <b>273°</b>	Rwy Idg TDZE Apt Elev	<b>8946</b> <b>292</b> <b>341</b>
--	------------------------	-----------------------------	---

# RNAV (GPS) RWY 27

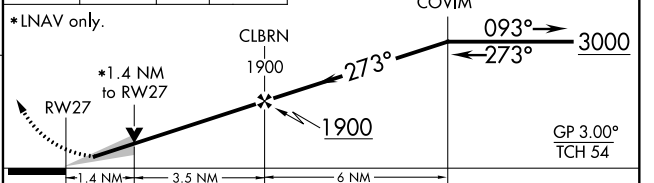
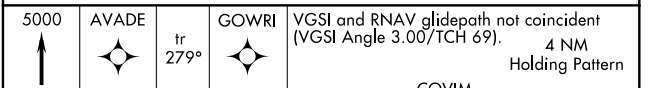
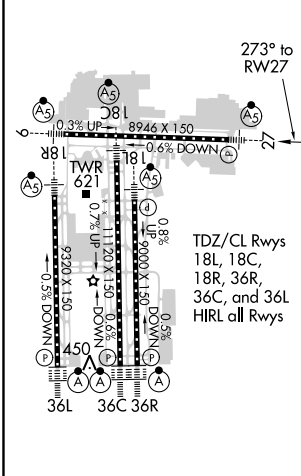
MEMPHIS INTL (MEM)

<p><b>⚠</b> For uncompensated Baro-VNAV systems, LNAV/VNAV NA below -9°C (16°F) or above 54°C (130°F). DME/DME RNP-0.3 NA. For inop ALS, increase LNAV Cat C and D visibility to 1½ SM. **RVR 1800 authorized with use of FD or AP or HUD to DA.</p>	<p>MALS/R</p>	<p>MISSED APPROACH: Climb to 5000 direct AVADE and on track 279° to GOWRI and hold, continue climb-in-hold to 5000.</p>
--	---------------	---

MEMPHIS APP CON	MEMPHIS TOWER	GND CON
<b>119.1 291.6</b> (176°-355°)	(Rwy 9-27) <b>118.3 257.8</b>	(Rwy 9-27) <b>121.0 379.2</b>
<b>125.8 338.3</b> (356°-175°)	(Rwys 18C-36C, 18L-36R) <b>119.7 257.8</b>	(Rwys 18C-36C, 18L-36R) <b>121.9 379.2</b>
	(Rwy 18R-36L) <b>128.425 257.8</b>	(Rwy 18R-36L) <b>121.65 379.2</b>



ELEV 341	<b>D</b>	TDZE 292
----------	----------	----------



CATEGORY	A	B	C	D
LPV DA **	492/24 200 (200-½)			
LNAV/VNAV DA	745/50 453 (500-1)			
LNAV MDA	800/24 508 (500-½)	800/55 508 (500-1)		
<b>C</b> CIRCLING	940-1 599 (600-1)	940-1½ 599 (600-1½)	1020-2¼ 679 (700-2¼)	

SE-1, 02 DEC 2021 TO 30 DEC 2021

SE-1, 02 DEC 2021 TO 30 DEC 2021