

LOC/DME I-TSE <b>110.5</b> Chan <b>42</b>	APP CRS <b>360°</b>	Rwy Idg <b>10715</b> TDZE <b>341</b> Apt Elev <b>341</b>
---	------------------------	--

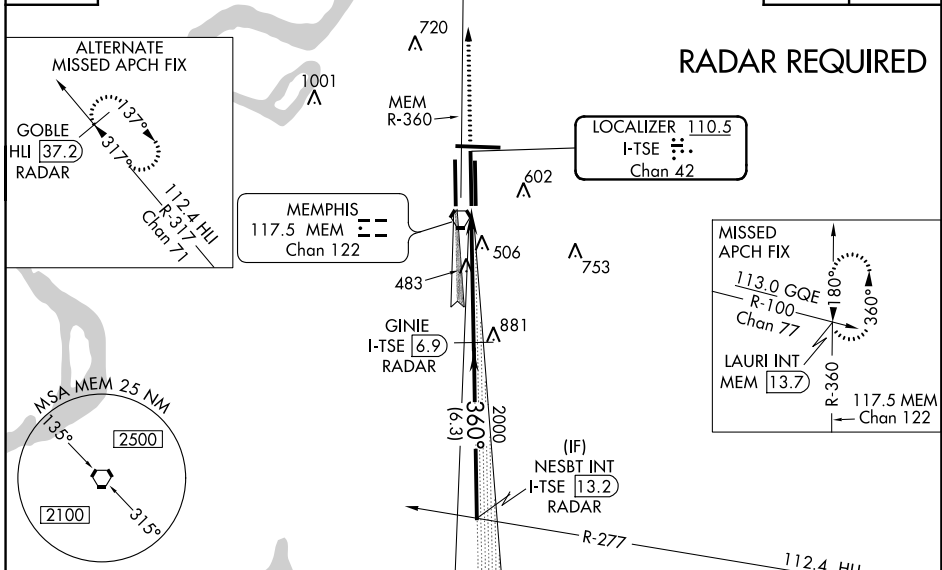
# ILS RWY 36C (CAT II & III)

MEMPHIS INTL (MEM)

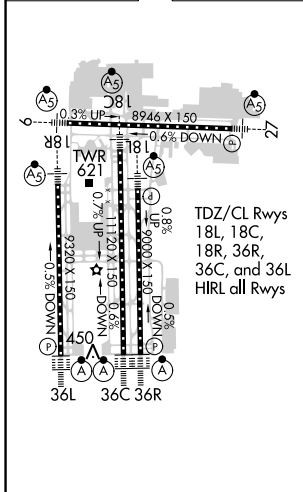
	DME or radar required.	ALSF-2	MISSED APPROACH: Climb to 3000 via MEM VORTAC R-360 to LAURI INT/MEM 13.7 DME and hold.
	Simultaneous approach authorized with Rwy 36L.		

MEMPHIS APP CON <b>119.1 291.6</b> (176°-355°) <b>125.8 338.3</b> (356°-175°)	MEMPHIS TOWER (Rwy 9-27) <b>118.3 257.8</b> (Rwys 18C-36C, 18L-36R) <b>119.7 257.8</b> (Rwy 18R-36L) <b>128.425 257.8</b>	GND CON (Rwy 9-27) <b>121.0 379.2</b> (Rwys 18C-36C, 18L-36R) <b>121.9 379.2</b> (Rwy 18R-36L) <b>121.65 379.2</b>
---	--	---

D-ATIS <b>127.75</b>	1337 A	△ 1450	CINC DEL <b>125.2</b>	CPDLC
-------------------------	--------	--------	--------------------------	-------



ELEV 341	<b>D</b>	TDZE 341
----------	----------	----------



**CATEGORY II & III ILS - SPECIAL AIRCREW & AIRCRAFT CERTIFICATION REQUIRED**

SE-1, 20 JUN 2019 to 18 JUL 2019

SE-1, 20 JUN 2019 to 18 JUL 2019