

LOC I-JIM <b>108.7</b>	APP CRS <b>273°</b>	Rwy Idg TDZE Apt Elev	<b>8946</b> <b>292</b> <b>341</b>
---------------------------	------------------------	-----------------------------	---

# ILS or LOC RWY 27

MEMPHIS INTL (MEM)

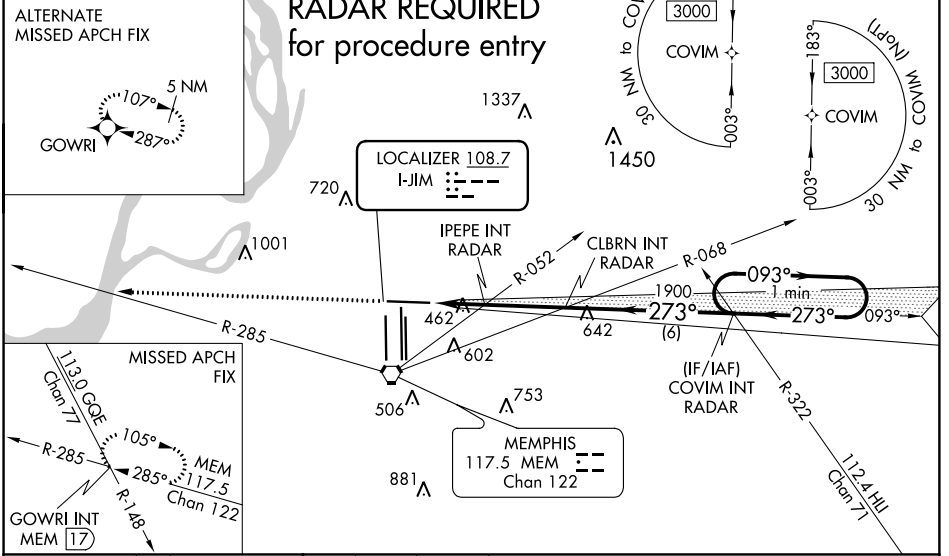
▼ For inop ALS, increase S-ILS Cat E visibility to RVR 4000, and S-LOC Cat E visibility to 2 SM, IPEPE fix minimums S-LOC Cat E visibility to 1½ SM.  
 \*\*RVR 1800 authorized with use of FD or AP or HUD to DA.

MALSRL MISSED APPROACH: Climb 5000 and intercept MEM VORTAC R-285 to GOWRI INT/17 DME and hold, continue climb-in-hold to 5000.

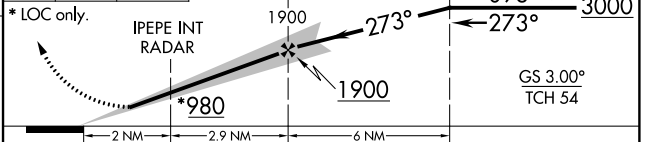
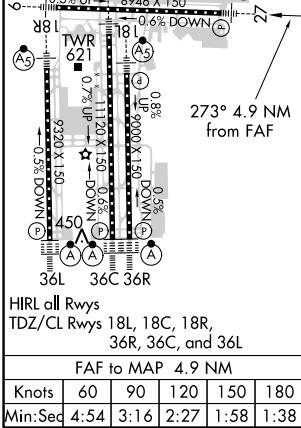
MEMPHIS APP CON <b>119.1 291.6</b> (176°-355°) <b>125.8 338.3</b> (356°-175°)	MEMPHIS TOWER (Rwy 9-27) <b>118.3 257.8</b> (Rwys 18C-36C, 18L-36R) <b>119.7 257.8</b> (Rwy 18R-36L) <b>128.425 257.8</b>	GND CON (Rwy 9-27) <b>121.0 379.2</b> (Rwys 18C-36C, 18L-36R) <b>121.9 379.2</b> (Rwy 18R-36L) <b>121.65 379.2</b>
---	--	---

D-ATIS <b>127.75</b>	CLNC DEL <b>125.2</b>	CPDLC
-------------------------	--------------------------	-------

## RNAV 1-GPS or RADAR REQUIRED for procedure entry



ELEV 341	TDZE 292	5000	MEM R-285	GOWRI INT	CLBRN INT RADAR	COVIM INT RADAR	One Minute Holding Pattern
----------	----------	------	-----------	-----------	-----------------	-----------------	----------------------------



CATEGORY	A	B	C	D	E
S-ILS 27 **	492/24 200 (200-½)				
S-LOC 27	980/24	688 (700-½)	980-1½	688 (700-1½)	
<b>C</b> CIRCLING	980-1	639 (700-1)	980-2	1020-2¼	1140-2¾
IPEPE FIX MINIMUMS (DUAL VOR RECEIVERS OR RADAR REQUIRED)					
S-LOC 27	720/24	428 (400-½)	720/40	428 (400-¾)	
<b>C</b> CIRCLING	940-1	599 (600-1)	940-1½	1020-2¼	1140-2¾

SE-1, 27 FEB 2020 to 26 MAR 2020

SE-1, 27 FEB 2020 to 26 MAR 2020