

LOC/DME I-EXS 111.15 Chan 48(Y)	APP CRS 180°	Rwy Idg TDZE Apt Elev 9000 301 341
---	------------------------	--

ILS or LOC RWY 18L

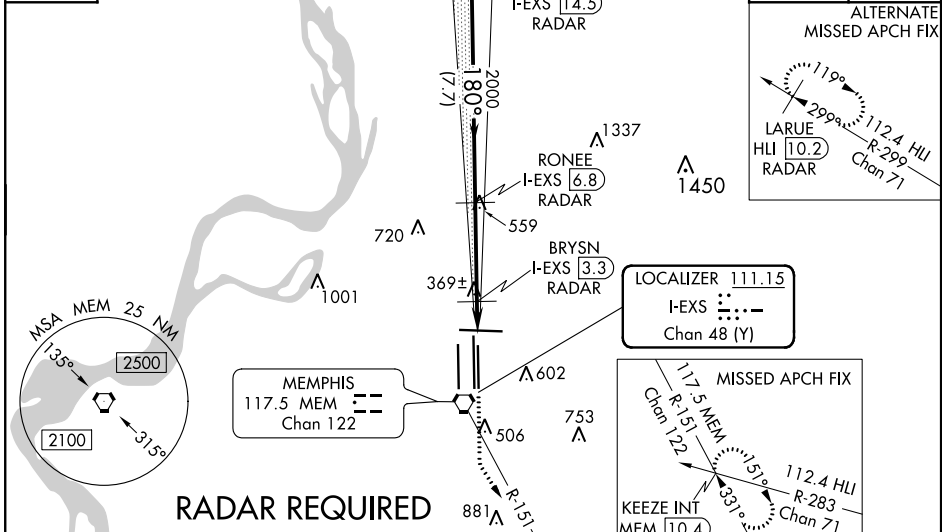
MEMPHIS INTL (MEM)

⚠ Simultaneous approach authorized. DME or RADAR required. For inop ALS, increase S-ILS 18L Cat E visibility to RVR 4000, S-LOC 18L Cat E visibility to 1 3/4 SM, BRYSN fix minimums, increase S-LOC 18L Cats D and E visibility to RVR 5000.

MALSR
MISSED APPROACH: Climb to 900 then climbing left turn to 5000 on MEM VORTAC R-151 to KEEZE INT/MEM 10.4 DME and hold, continue climb-in-hold to 5000.

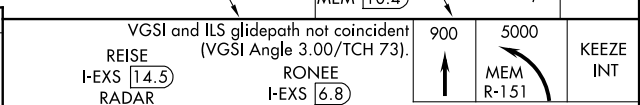
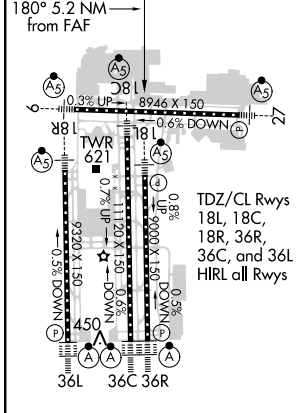
MEMPHIS APP CON 119.1 291.6 (176°-355°) 125.8 338.3 (356°-175°)	MEMPHIS TOWER (Rwy 9-27) 118.3 257.8 (Rwys 18C-36C, 18L-36R) 119.7 257.8 (Rwy 18R-36L) 128.425 257.8	GND CON (Rwy 9-27) 121.0 379.2 (Rwys 18C-36C, 18L-36R) 121.9 379.2 (Rwy 18R-36L) 121.65 379.2
---	--	---

D-ATIS 127.75	CLNC DEL 125.2	CPDLC
-------------------------	--------------------------	-------



RADAR REQUIRED

ELEV 341	TDZE 301
-----------------	-----------------



CATEGORY	A	B	C	D	E
S-ILS 18L	501/18 200 (200-1/2)		501/24 200 (200-1/2)		
S-LOC 18L	820/24 519 (500-1/2)	820/50 519 (500-1)	820/60 519 (500-1 1/4)		
C CIRCLING	940-1 599 (600-1)	940-1 1/2 599 (600-1 1/2)	1020-2 1/4 679 (700-2 1/4)	1140-2 3/4 779 (800-2 3/4)	

BRYSN FIX MINIMUMS					
S-LOC 18L	620/24 319 (300-1/2)	620/40 319 (300-3/4)			

FAF to MAP 5.2 NM					
Knots	60	90	120	150	180
Min:Sec	5:12	3:28	2:36	2:05	1:44

C CIRCLING	940-1 599 (600-1)	940-1 1/2 599 (600-1 1/2)	1020-2 1/4 679 (700-2 1/4)	1140-2 3/4 779 (800-2 3/4)	
-------------------	-------------------	---------------------------	----------------------------	----------------------------	--

SE-1, 20 JUN 2019 to 18 JUL 2019

SE-1, 20 JUN 2019 to 18 JUL 2019