


LOC I-SDU 111.95	APP CRS 180°	Rwy ldg 11120
		TDZE 290
		Apt Elev 341

ILS or LOC RWY 18C

MEMPHIS INTL (MEM)

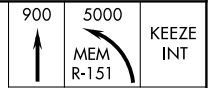
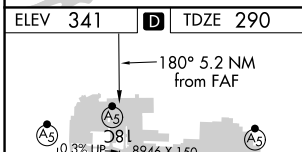
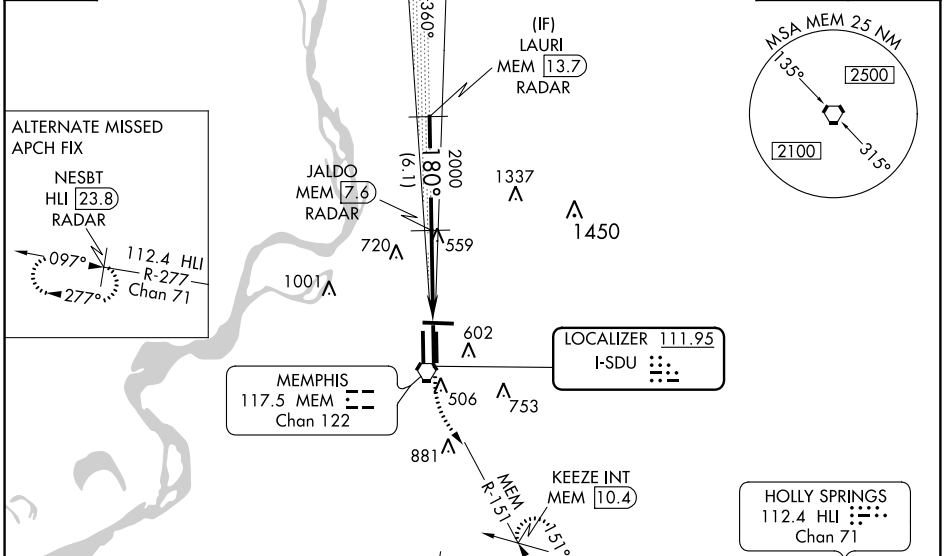
Simultaneous approach authorized.
DME or RADAR required.
 For inop ALS, increase S-ILS 18C all Cats visibility to 1 1/4 SM.

MALSR


MISSED APPROACH: Climb to 900 then climbing left turn to 5000 on MEM VORTAC R-151 to KEEZE INT/MEM 10.4 DME and hold, continue climb-in-hold to 5000.

MEMPHIS APP CON 119.1 291.6 (176°-355°) 125.8 338.3 (356°-175°)	MEMPHIS TOWER (Rwy 9-27) 118.3 257.8 (Rwys 18C-36C, 18L-36R) 119.7 257.8 (Rwy 18R-36L) 128.425 257.8	GND CON (Rwy 9-27) 121.0 379.2 (Rwys 18C-36C, 18L-36R) 121.9 379.2 (Rwy 18R-36L) 121.65 379.2
---	--	---

D-ATIS 127.75	CLNC DEL 125.2	CPDLC
-------------------------	--------------------------	-------



TDZ/CL Rwys 18L, 18C, 18R, 36R, 36C, and 36L HIRL all Rwys

FAF to MAP 5.2 NM

Knots	60	90	120	150	180
Min:Sec	5:12	3:28	2:36	2:05	1:44

CATEGORY	A	B	C	D	E
S-ILS 18C	657/40 367 (400-3/4)				
S-LOC 18C	860/24	570 (600-1/2)	860/50 570 (600-1)	860/60 570 (600-1 1/4)	860-1 1/2 570 (600-1 1/2)
CIRCLING	940-1	599 (600-1)	940-1 1/2 599 (600-1 1/2)	1020-2 1/4 679 (700-2 1/4)	1140-2 3/4 799 (800-2 3/4)

MEMPHIS, TENNESSEE

Amdt 1D 29MAR18

MEMPHIS INTL (MEM)

ILS or LOC RWY 18C

SE-1, 15 AUG 2019 to 12 SEP 2019

SE-1, 15 AUG 2019 to 12 SEP 2019