

GMBUD SEVEN DEPARTURE (RNAV)  
(GMBUD7.GMBUD) 31 DEC 20

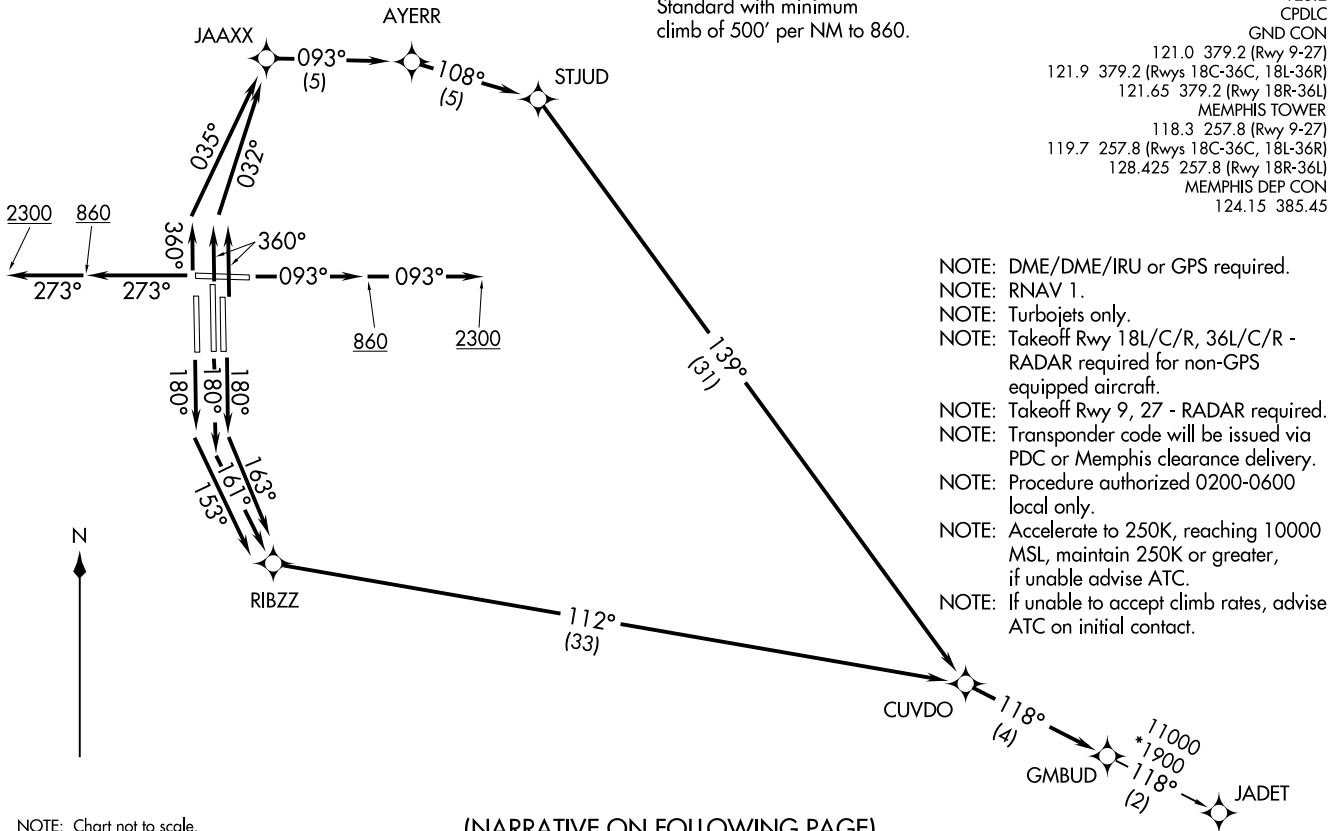
MEMPHIS, TENNESSEE  
MEMPHIS INTL (MEM)

TOP ALTITUDE:  
5000

TAKEOFF MINIMUMS:  
Rwy 9, 18L/C/R, 27, 36L/C/R:  
Standard with minimum  
climb of 500' per NM to 860.

|                 |                               |
|-----------------|-------------------------------|
| D-ATIS          | 127.75                        |
| CNCL DEL        | 125.2                         |
| CPDLC           | GND CON                       |
| 121.0           | 379.2 (Rwy 9-27)              |
| 121.9           | 379.2 (Rwys 18C-36C, 18L-36R) |
| 121.65          | 379.2 (Rwy 18R-36L)           |
| MEMPHIS TOWER   |                               |
| 118.3           | 257.8 (Rwy 9-27)              |
| 119.7           | 257.8 (Rwys 18C-36C, 18L-36R) |
| 128.425         | 257.8 (Rwy 18R-36L)           |
| MEMPHIS DEP CON |                               |
| 124.15          | 385.45                        |

- NOTE: DME/DME/IRU or GPS required.
- NOTE: RNAV 1.
- NOTE: Turbojets only.
- NOTE: Takeoff Rwy 18L/C/R, 36L/C/R - RADAR required for non-GPS equipped aircraft.
- NOTE: Takeoff Rwy 9, 27 - RADAR required.
- NOTE: Transponder code will be issued via PDC or Memphis clearance delivery.
- NOTE: Procedure authorized 0200-0600 local only.
- NOTE: Accelerate to 250K, reaching 10000 MSL, maintain 250K or greater, if unable advise ATC.
- NOTE: If unable to accept climb rates, advise ATC on initial contact.



NOTE: Chart not to scale.

(NARRATIVE ON FOLLOWING PAGE)

(GMBUD7.GMBUD) 20366  
GMBUD SEVEN DEPARTURE (RNAV)

MEMPHIS INTL (MEM)  
MEMPHIS, TENNESSEE

AL-253 (FAA)



DEPARTURE ROUTE DESCRIPTION

TAKEOFF RUNWAY 9: Climb on heading 093° to 860, then continue climb to 2300 on heading 093° or as assigned by ATC, for RADAR vectors to CUVDO, then on depicted route to GMBUD, thence....

TAKEOFF RUNWAY 18C: Climb on heading 180° to intercept course 161° to RIBZZ, then on depicted route to GMBUD, thence....

TAKEOFF RUNWAY 18L: Climb on heading 180° to intercept course 163° to RIBZZ, then on depicted route to GMBUD, thence....

TAKEOFF RUNWAY 18R: Climb on heading 180° to intercept course 153° to RIBZZ, then on depicted route to GMBUD, thence....

TAKEOFF RUNWAY 27: Climb on heading 273° to 860, then continue climb to 2300 on heading 273° or as assigned by ATC, for RADAR vectors to cross CUVDO, then on depicted route to GMBUD, thence....

TAKEOFF RUNWAY 36L: Climb on heading 360° to intercept course 035° to JAAXX, then on depicted route to GMBUD, thence....

TAKEOFF RUNWAYS 36C/R: Climb on heading 360° to intercept course 032° to JAAXX, then on depicted route to GMBUD, thence....

....maintain 5000. Expect clearance to filed altitude within ten (10) minutes after departure.

JADET TRANSITION (GMBUD7.JADET):

SE-1, 27 JAN 2022 to 24 FEB 2022

SE-1, 27 JAN 2022 to 24 FEB 2022