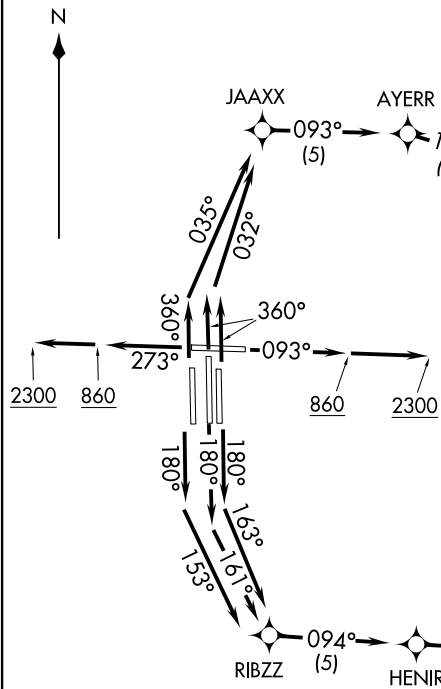


BBKNG SIX DEPARTURE (RNAV)
(BBKNG6:BBKNG) 08NOV18

MEMPHIS, TENNESSEE
MEMPHIS INTL (MEM)

TOP ALTITUDE:
5000



TAKEOFF MINIMUMS:

Rwy 9, 18L/C/R, 27, 36L/C/R: Standard with minimum climb of 500' per NM to 860.

NOTE: Chart not to scale.

(NARRATIVE ON FOLLOWING PAGE)

D-ATIS 127.75
 CLNC DEL 125.2
 CPDLC
 GND CON 121.0 379.2 (Rwy 9-27)
 121.9 379.2 (Rwys 18C-36C, 18L-36R)
 121.65 379.2 (Rwy 18R-36L)
 MEMPHIS TOWER 118.3 257.8 (Rwy 9-27)
 119.7 257.8 (Rwys 18C-36C, 18L-36R)
 128.425 257.8 (Rwy 18R-36L)
 MEMPHIS DEP CON 124.15 385.45

- NOTE: DME/DME/IRU or GPS required.
- NOTE: RNAV 1.
- NOTE: Turbojets only.
- NOTE: Takeoff Rwy 18L/C/R, 36L/C/R - RADAR required for non-GPS equipped aircraft.
- NOTE: Takeoff Rwy 9, 27 - RADAR required.
- NOTE: Transponder code will be issued via PDC or Memphis clearance delivery.
- NOTE: Accelerate to 250K, if unable advise ATC.
- NOTE: If unable to accept climb rate, advise ATC on initial contact.

(BBKNG6:BBKNG) 18312
BBKNG SIX DEPARTURE (RNAV)

AL253 (FAA)

MEMPHIS INTL (MEM)
MEMPHIS, TENNESSEE



DEPARTURE ROUTE DESCRIPTION

TAKEOFF RWY 9: Climb heading 093° to 860, then continue climb to 2300 on heading 093° or assigned by ATC, for vectors to LEOOO, then on depicted route to BBKNG, thence....

TAKEOFF RWY 18C: Climb heading 180° to intercept course 161° to RIBZZ, then on depicted route to BBKNG, thence....

TAKEOFF RWY 18L: Climb heading 180° to intercept course 163° to RIBZZ, then on depicted route to BBKNG, thence....

TAKEOFF RWY 18R: Climb heading 180° to intercept course 153° to RIBZZ, then on depicted route to BBKNG, thence....

TAKEOFF RWY 27: Climb heading 273° to 860, then continue climb to 2300 on heading 273° or assigned by ATC, for vectors to LEOOO, then on depicted route to BBKNG, thence....

TAKEOFF RWY 36L: Climb heading 360° to intercept course 035° to JAAXX, then on depicted route to BBKNG, thence....

TAKEOFF RWYS 36C/R: Climb heading 360° to intercept course 032° to JAAXX, then on depicted route to BBKNG, thence....

....maintain 5000. Expect clearance to filed altitude within ten (10) minutes after departure.

KERMI TRANSITION (BBKNG6.KERMI):

SE-1, 10 SEP 2020 to 08 OCT 2020

SE-1, 10 SEP 2020 to 08 OCT 2020