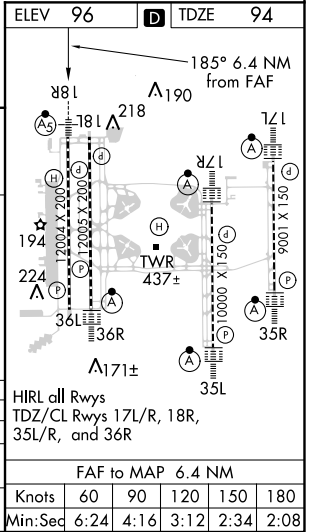
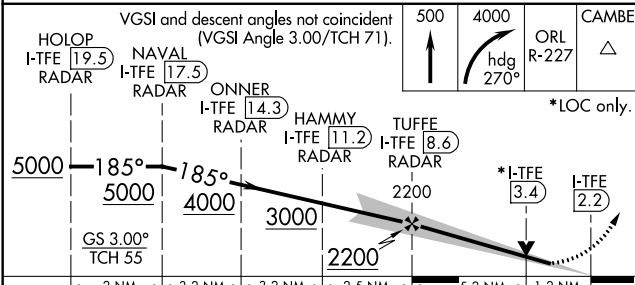
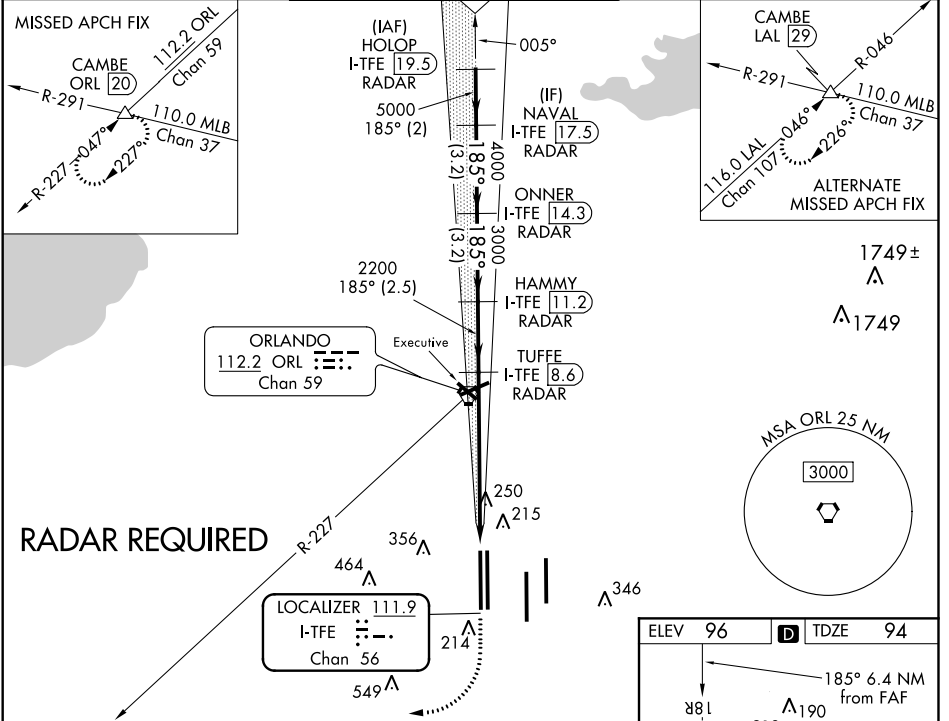


ILS or LOC RWY 18R

ORLANDO INTL (MCO)

| | | |
|---|------------------------|--|
| LOC/DME I-TFE 111.9 Chan 56 | APP CRS 185° | Rwy Idg 12004 TDZE 94 Apt Elev 96 |
|---|------------------------|--|

| | | | | | | |
|--|---------------------------------------|--|---|---|--|-------|
| <p>Simultaneous approach authorized. DME or RADAR required.</p> | | MALS R | <p>MISSED APPROACH: Climb to 500 then climbing right turn to 4000 on heading 270° and on ORL VORTAC R-227 to CAMBE INT/ORL 20 DME and hold, continue climb-in-hold to 4000.</p> | | | |
| D-ATIS ARR 121.25 DEP 120.525 | ORLANDO APP CON 124.8 307.0 | ORLANDO TOWER 124.3 (Rwys 18L-36R, 18R-36L) 118.45 (Rwys 17L-35R, 17R-35L) | 253.5 | GND CON 126.4 275.8 (East) 121.8 275.8 (West) | CLNC DEL 125.475 341.7 | CPDLC |



| | | | | |
|-----------|----------------------|---------------------------|-------------------|---|
| CATEGORY | A | B | C | D |
| S-ILS 18R | 294/18 200 (200-1/2) | | | |
| S-LOC 18R | 540/24 446 (500-1/2) | 540/45 446 (500-7/8) | | |
| CIRCLING | 740-1 644 (700-1) | 740-1 3/4 644 (700-1 3/4) | 740-2 644 (700-2) | |

SE-3, 21 JUN 2018 to 19 JUL 2018

SE-3, 21 JUN 2018 to 19 JUL 2018