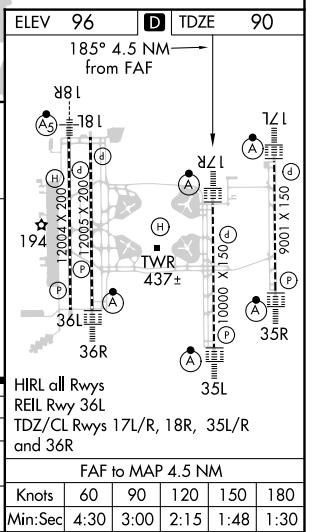
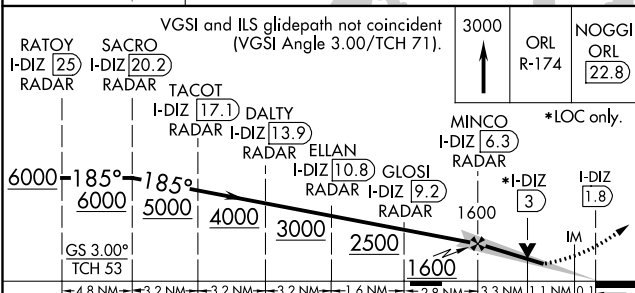
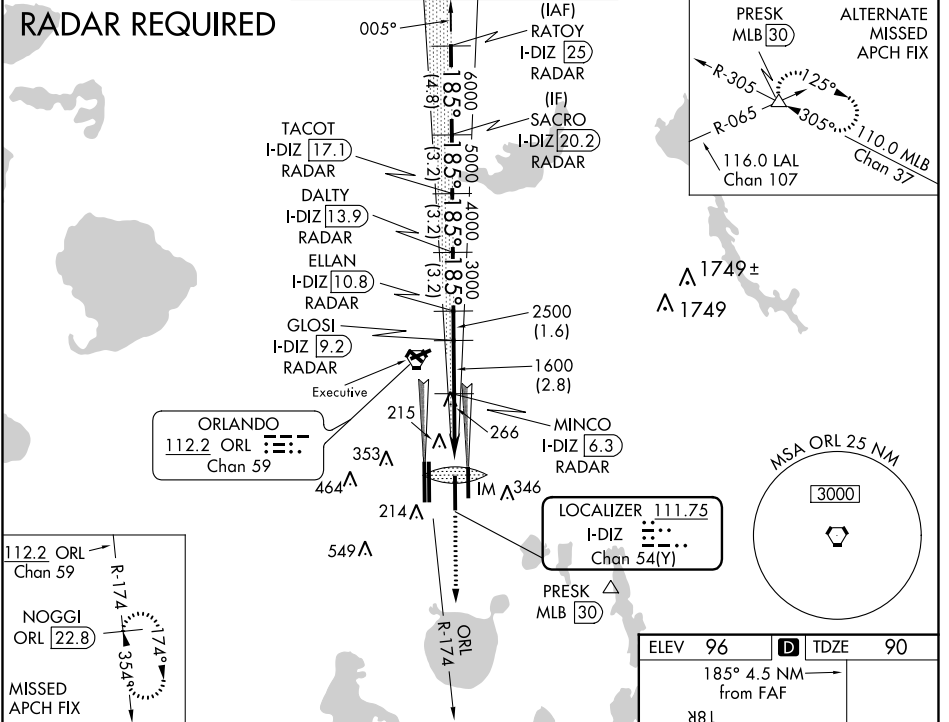


LOC/DME I-DIZ <b>111.75</b> Chan 54(Y)	APP CRS <b>185°</b>	Rwy Idg TDZE Apt Elev <b>10000</b> <b>90</b> <b>96</b>
--	------------------------	---

# ILS or LOC RWY 17R

ORLANDO INTL (MCO)

<b>⚠</b> Simultaneous approach authorized. DME or RADAR required. Bright lights on highway midway between Rwy 17L and Rwy 17R may be mistaken for runway lights.	ALSF-2 	MISSED APPROACH: Climb to 3000 via ORL VORTAC R-174 to NOGGI/ ORL 22.8 DME and hold.			
			D-ATIS ARR <b>121.25</b> DEP <b>120.525</b>	ORLANDO APP CON <b>124.8 307.0</b>	ORLANDO TOWER <b>124.3</b> (Rwys 18L-36R, 18R-36L) <b>253.5</b> <b>118.45</b> (Rwys 17L-35R, 17R-35L) <b>253.5</b>



CATEGORY	A	B	C	D
S-ILS 17R	290/18 200 (200-½)			
S-LOC 17R	520/24 430 (500-½)	520/40 430 (500-¾)	520/50 430 (500-1)	
CIRCLING	740-1 644 (700-1)	740-1¼ 644 (700-1¾)	740-2 644 (700-2)	

SE-3, 10 OCT 2019 to 07 NOV 2019

SE-3, 10 OCT 2019 to 07 NOV 2019