

RNAV (RNP) Z RWY 27

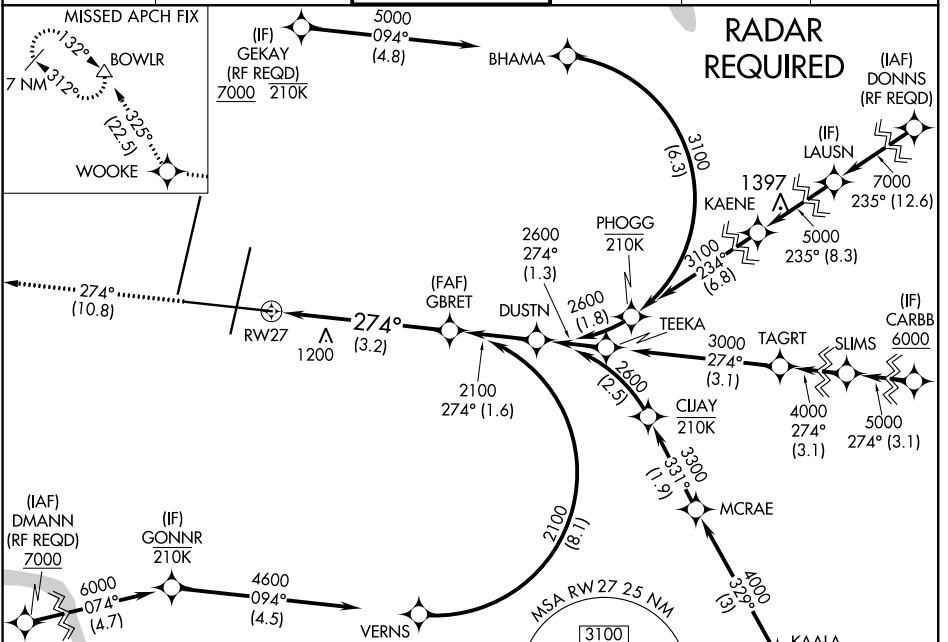
KANSAS CITY INTL (MCI)

APP CRS	Rwy Idg	9501
274°	TDZE	1026
	Apt Elev	1026

▼ For uncompensated Baro-VNAV systems, procedure NA below -20°C (-4°F) or above 54°C (130°F). For inop MALSR, increase RNP 0.15 all Cats visibility to 1¼ and RNP 0.30 all Cats visibility to 1½. GPS required.

MALSR MISSED APPROACH: Climb to 4000 on track 274° to WOOKIE and on track 325° to BOWLWR and hold.

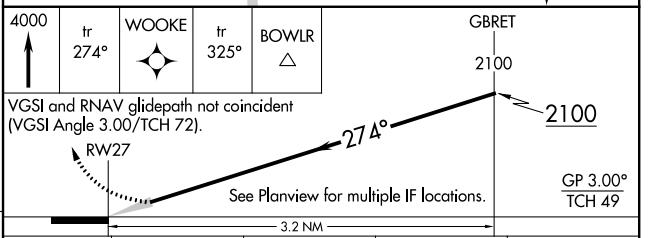
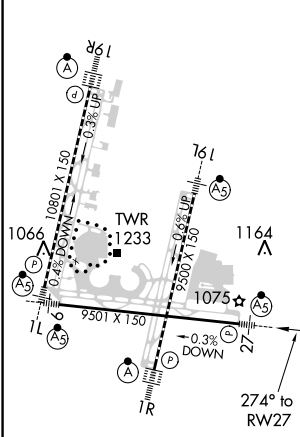
D-ATIS 128.375	KANSAS CITY APP CON 120.95 318.1	INTERNATIONAL TOWER 128.2 254.25	GND CON 121.8	CLNC DEL 135.7	CPDLC
--------------------------	--	---	-------------------------	--------------------------	-------



NC-3, 15 AUG 2019 to 12 SEP 2019

NC-3, 15 AUG 2019 to 12 SEP 2019

ELEV 1026	D	TDZE 1026
-----------	----------	-----------



CATEGORY	A	B	C	D
RNP 0.15 DA		1410/45	384 (400-¾)	
RNP 0.30 DA		1511/60	485 (500-1½)	

AUTHORIZATION REQUIRED