

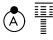
WAAS CH 58208 W01A	APP CRS 011°	Rwy Idg TDZE Apt Elev	9500 1017 1026
---------------------------------	------------------------	-----------------------------	---

RNAV (GPS) Y RWY 1R

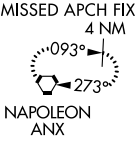
KANSAS CITY INTL (MCI)

▼ For uncompensated Baro-VNAV systems, LNAV/VNAV NA below -20°C (-4°F) or above 54°C (130°F). DME/DME RNP-0.3 NA. For inop ALSF, increase LPV Cat E visibility to RVR 4000, LNAV/VNAV Cat E visibility to RVR 5000 and LNAV Cat C/D/E visibility to RVR 5000. Simultaneous approach authorized with Rwy 1L. LNAV procedure NA during simultaneous operations. Use of FD or AP providing RNAV track guidance required during simultaneous operations.

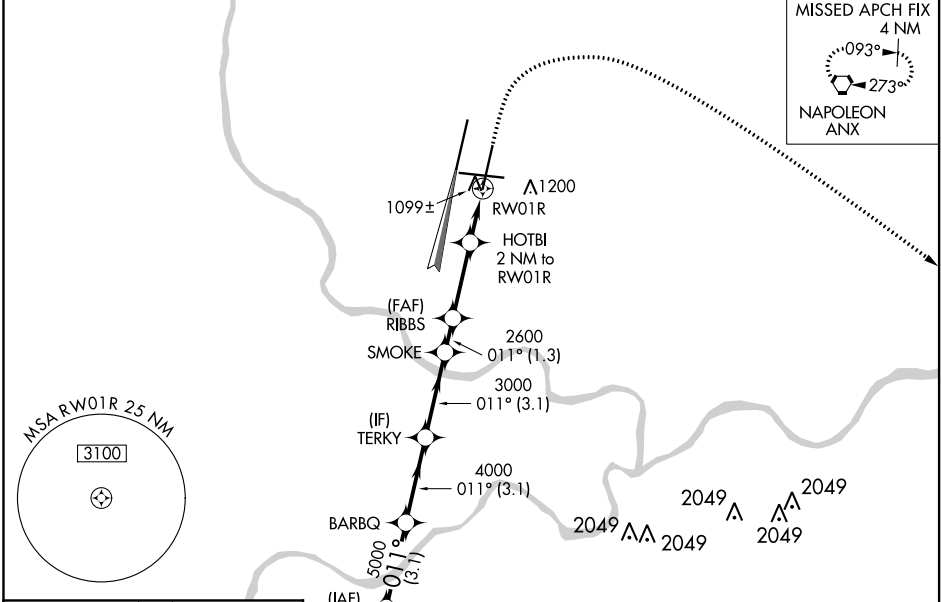
ALSF-2



MISSED APPROACH: Climb to 1500 then climbing right turn to 4000 direct ANX VORTAC and hold.

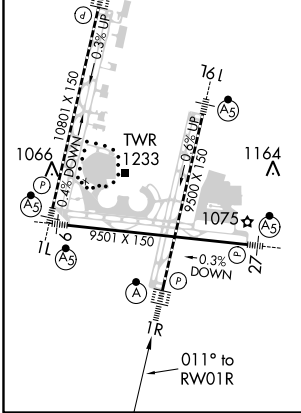


D-ATIS 128.375	KANSAS CITY APP CON 120.95 318.1	INTERNATIONAL TOWER 128.2 254.25	GND CON 121.8	CLNC DEL 135.7	CPDLC
--------------------------	--	--	-------------------------	--------------------------	-------



ELEV 1026	D	TDZE 1017
-----------	---	-----------

HIRL all Rwy's
TDZ/CL Rwy's 1L, 1R, 19R and 19L



SPICY	VGSi and RNAV glidepath not coincident (VGSi Angle 3.00/TCH 74).									
6000	011°	5000	4000	3000	2600	2600	*1700	1500	4000	ANX
GP 3.00°										
TCH 59										
	3.1 NM	3.1 NM	3.1 NM	1.3 NM	2.8 NM	1.1 NM	0.9 NM			
CATEGORY	A		B		C		D		E	
LPV DA	1217/18					200 (200-½)				
LNAV/VNAV DA	1327/24					310 (400-½)				
LNAV MDA	1360/24		343 (400-½)		1360/30		343 (400-¾)			
CIRCLING	1540-1		514 (600-1)		1540-1½		514 (600-1½)		1580-2 554 (600-2)	

NC-3: 07 NOV 2019 to 05 DEC 2019

NC-3: 07 NOV 2019 to 05 DEC 2019