

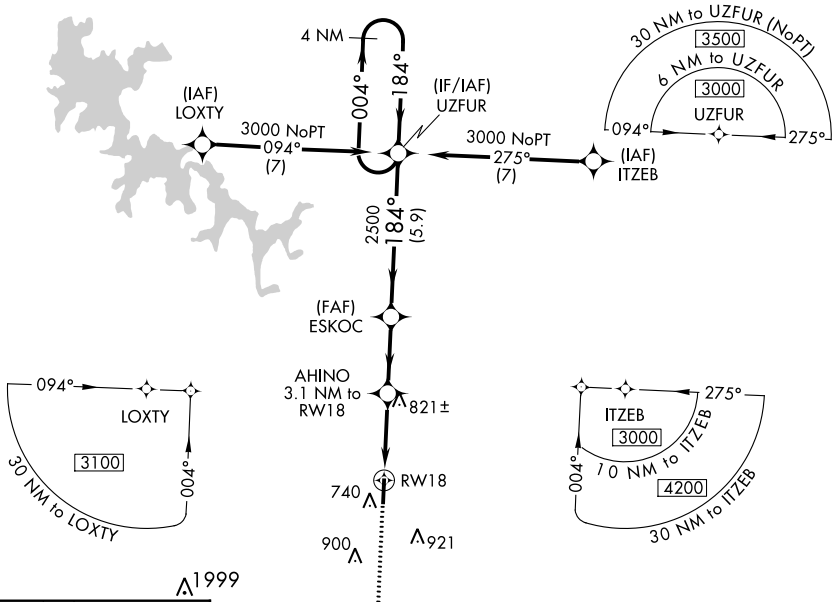
WAAS CH 48812 W18A	APP CRS 184°	Rwy Idg TDZE Apt Elev	4753 609 614
----------------------------------------	------------------------	-----------------------------	-----------------------------------------

RNAV (GPS) RWY 18

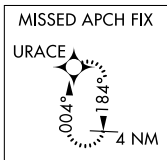
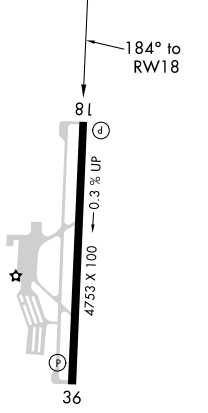
MURFREESBORO MUNI (MBT)

▽ For uncompensated Baro-VNAV systems, LNAV/VNAV NA below -16°C (4°F) or above 54°C (130°F). DME/DME RNP-0.3 NA. MISSED APPROACH: Climb to 3000 direct URACE and hold.

AWOS-3 133.975	NASHVILLE APP CON 118.4 360.7	GCO 135.075	UNICOM 123.075 (CTAF)
--------------------------	-----------------------------------------	-----------------------	---------------------------------



ELEV 614	TDZE 609
----------	----------



3000 URACE	VGSI and descent angles not coincident (VGSI Angle 3.00/TCH 18).		4 NM Holding Pattern
↑	AHINO 3.1 NM to RW18	ESKOC 2500	UZFUR 3000
	*1.4 NM to RW18	*LNAV only.	GP 3.00° TCH 40
	*1620	2500	
	1.4	1.7 NM	2.7 NM
		B	C
		D	
LPV DA	859-3/4 250 (300-3/4)		NA
LNAV/VNAV DA	898-7/8 289 (300-7/8)		NA
LNAV MDA	1080-1 471 (500-1)	1080-1 3/8 471 (500-1 3/8)	NA
C CIRCLING	1080-1 466 (500-1)	1280-1 3/4 666 (700-1 3/4)	NA

MIRL Rwy 18-36
REIL Rws 18 and 36

SE-1, 27 FEB 2020 to 26 MAR 2020

SE-1, 27 FEB 2020 to 26 MAR 2020