

WAAS CH <b>69211</b> <b>W14A</b>	APP CRS <b>140°</b>	Rwy Idg TDZE Apt Elev	<b>6399</b> <b>668</b> <b>668</b>
--	------------------------	-----------------------------	---

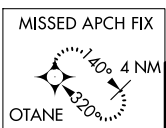
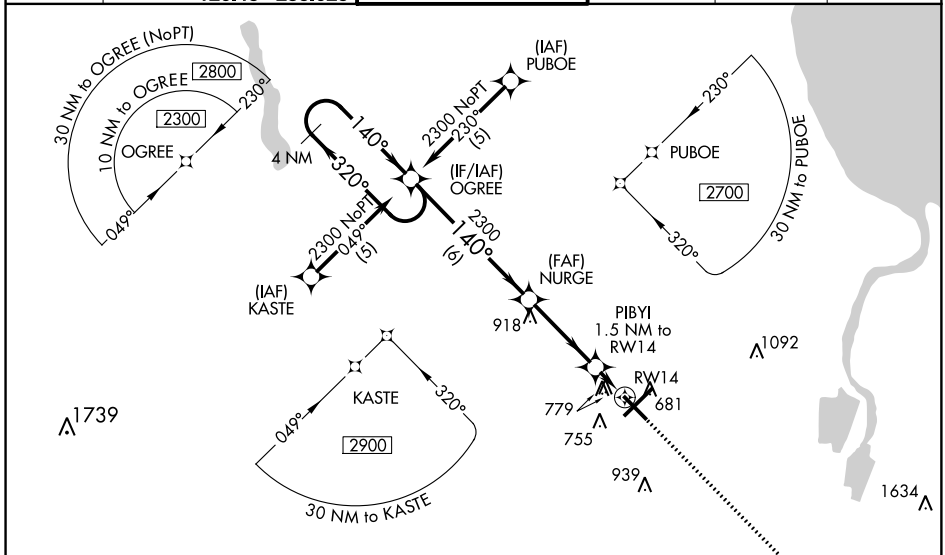
# RNAV (GPS) RWY 14

MBS INTL (MBS)

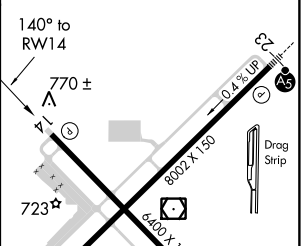
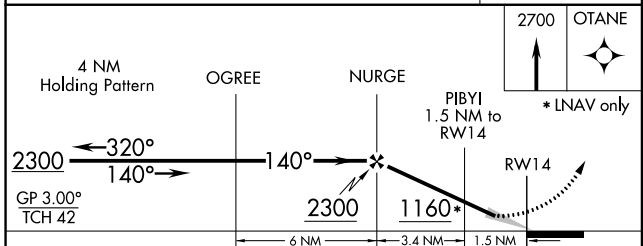
**⚠** Baro-VNAV NA when using Saginaw County H W Browne altimeter setting.  
**⚠** For uncompensated Baro-VNAV systems, LNAV/VNAV NA below -1.6°C (4°F) or above 47°C (116°F). When local altimeter setting not received, use Saginaw County H W Browne altimeter setting and increase all DA 36 feet and all MDA 40 feet, increase LNAV Cat. C visibility ¼ mile. DME/DME RNP -0.3 NA.

MISSED APPROACH: Climb to 2700 direct OTANE and hold.

ATIS <b>125.925</b>	SAGINAW APP CON * 050°-229° <b>120.95 235.625</b> 230°-049° <b>126.45 235.625</b>	SAGINAW TOWER * <b>120.1</b> (CTAF) <b>257.7</b>	GND CON <b>121.7</b>	CLNC DEL <b>121.85</b>	UNICOM <b>122.95</b>
------------------------	---	---	-------------------------	---------------------------	-------------------------



ELEV 668	<b>D</b>	TDZE 668
----------	----------	----------



CATEGORY	A	B	C	D
LPV DA		1004-1¼	336 (400-1¼)	
LNAV/VNAV DA		1079-1½	411 (500-1½)	
LNAV MDA	1040-1	372 (400-1)		1040-1¼ 372 (400-1¼)
CIRCLING	1100-1 432 (500-1)	1120-1 452 (500-1)	1120-1½ 452 (500-1½)	1220-2 552 (600-2)

REIL Rwy 14 and 32  
 HIRL Rwy 5-23 and 14-32

EC-1, 07 DEC 2017 to 04 JAN 2018

EC-1, 07 DEC 2017 to 04 JAN 2018