

NDB LXY <b>329</b>	APP CRS <b>328°</b>	Rwy Idg TDZE Apt Elev	<b>N/A</b> <b>N/A</b> <b>544</b>
-----------------------	------------------------	-----------------------------	--

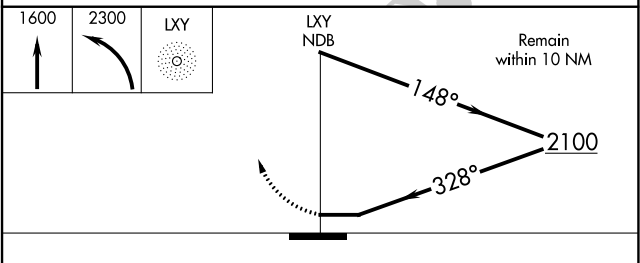
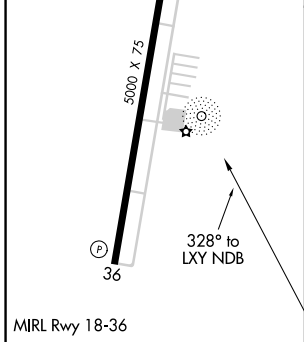
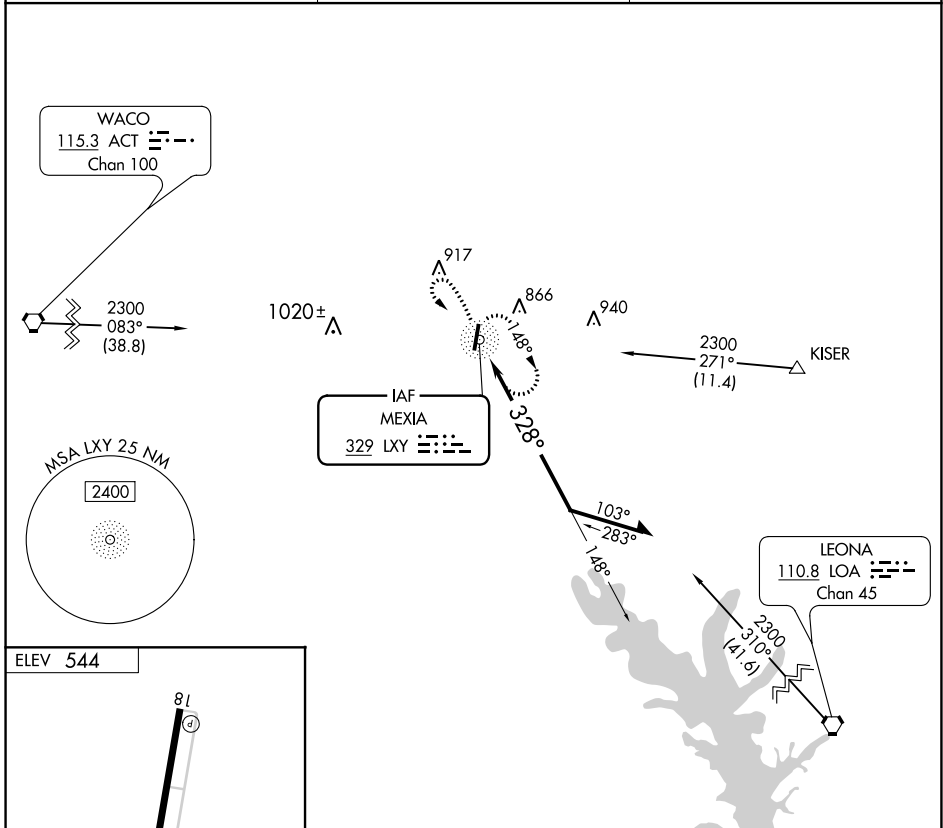
**NDB-A**

MEXIA-LIMESTONE COUNTY (LXY)

⚠️ **NA** Obtain local altimeter setting on CTAF; when not received, use Waco Rgnl altimeter setting and increase all MDA 100 feet and Cat C visibility ¼ mile. Rwy 36 helicopter visibility reduction below ¾ SM NA.

**MISSED APPROACH:** Climb to 1600 then climbing left turn to 2300 direct LXY NDB and hold.

AWOS-3 <b>127.275</b>	WACO APP CON <b>127.65 352.0</b>	UNICOM <b>122.8</b> (CTAF)
--------------------------	-------------------------------------	-------------------------------



CATEGORY	A	B	C	D
CIRCLING	1080-1	536 (600-1)	1180-1¾ 636 (700-1¾)	NA

SC-5, 28 JAN 2021 to 25 FEB 2021

SC-5, 28 JAN 2021 to 25 FEB 2021