

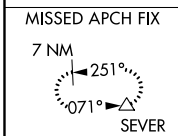
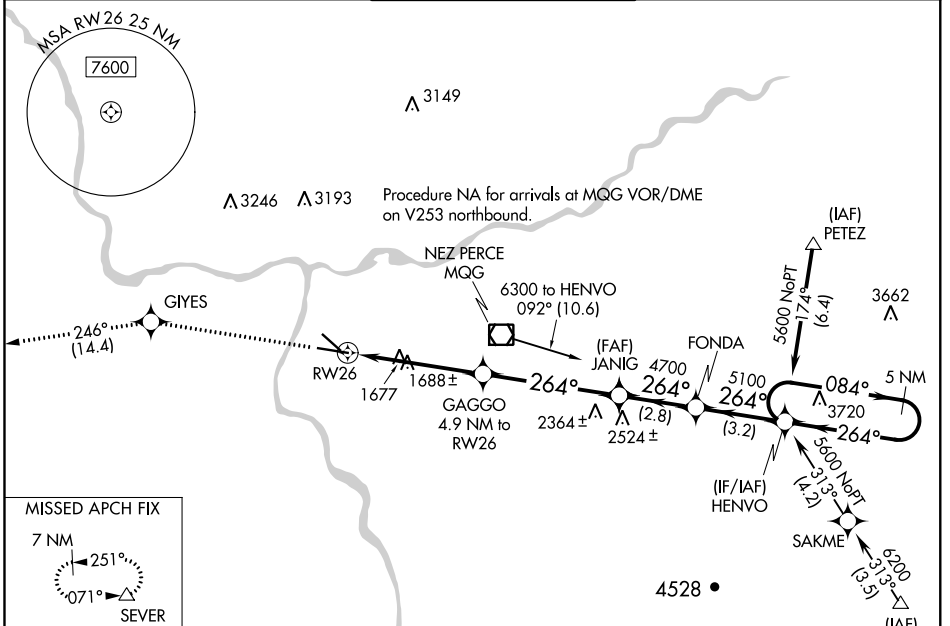
WAAS CH 78012 W26A	APP CRS 264°	Rwy Idg TDZE Apt Elev	6511 1442 1442
---------------------------------	------------------------	-----------------------------	---

RNAV (GPS) Y RWY 26

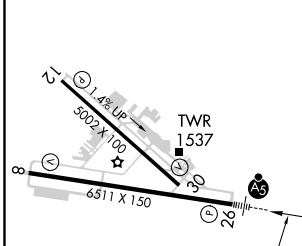
LEWISTON-NEZ PERCE COUNTY (LWS)

	For uncompensated Baro-VNAV systems, LNAV/VNAV NA below -17°C (2°F) or above 47°C (116°F). DME/DME RNP-0.3 NA.	MALSR AS	MISSED APPROACH: Climb to 7000 direct GIYES and on track 246° to SEVER and hold, continue climb-in-hold to 7000.

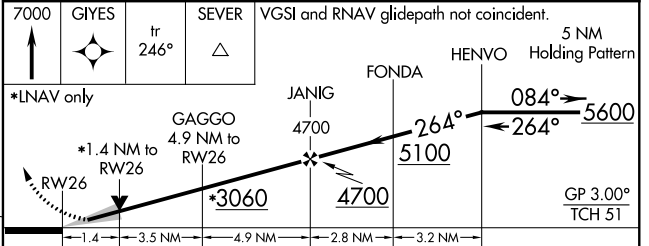
ASOS 135.575	SEATTLE CENTER 123.95 290.55	LEWISTON TOWER ★ 119.4 (CTAF) 0 318.8	GND CON 121.9	UNICOM 122.95
------------------------	--	---	-------------------------	-------------------------



ELEV 1442	D	TDZE 1442
------------------	----------	------------------



REIL Rwy 8	REIL Rwy 12	HIRL Rwy 8-26	MIRL Rwy 12-30
------------	-------------	---------------	----------------



CATEGORY	A	B	C	D
LPV DA		1642-1/2	200 (200-1/2)	
LNAV/VNAV DA		1962-1 1/4	520 (600-1 1/4)	
LNAV MDA	1940-1/2	498 (500-1/2)	1940-1	498 (500-1)
CIRCLING	2000-1	558 (600-1)	2000-1 1/2 558 (600-1 1/2)	2160-2 1/4 718 (800-2 1/4)

NW-1, 29 MAR 2018 to 26 APR 2018

NW-1, 29 MAR 2018 to 26 APR 2018