

KUSSO EIGHT DEPARTURE (RNAV)
(KUSSO8.KUSSO) 17JUN21

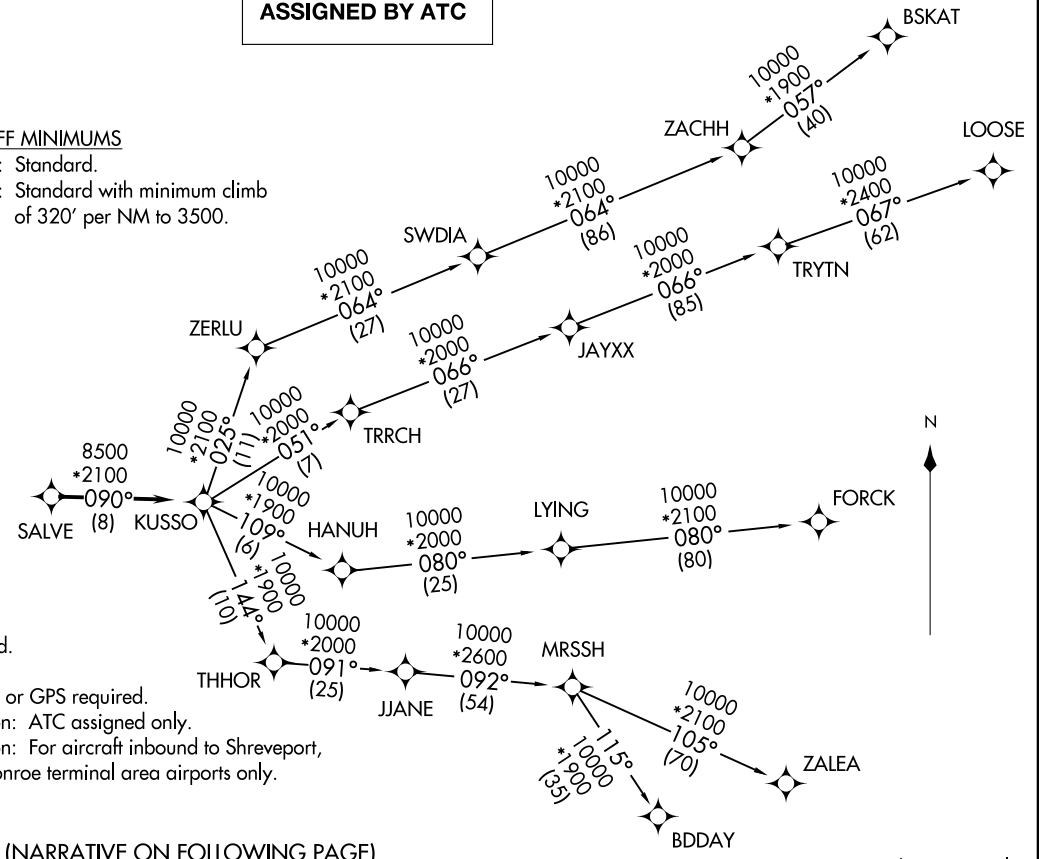
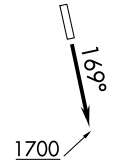
(KUSSO8.KUSSO) 21168
KUSSO EIGHT DEPARTURE (RNAV)

CTAF
122.8
REGIONAL DEP CON
118.1 306.95

**TOP ALTITUDE:
ASSIGNED BY ATC**

TAKEOFF MINIMUMS

Rwy 17: Standard.
Rwy 35: Standard with minimum climb
of 320' per NM to 3500.



- NOTE: RADAR required.
- NOTE: RNAV 1.
- NOTE: DME/DME/IRU or GPS required.
- NOTE: BDDAY transition: ATC assigned only.
- NOTE: MRSSH transition: For aircraft inbound to Shreveport, Jackson and Monroe terminal area airports only.

(NARRATIVE ON FOLLOWING PAGE)

NOTE: Chart not to scale.

DECATUR, TEXAS
DECATUR MUNI (LTD)

DECATUR, TEXAS
DECATUR MUNI (LTD)

AL-6190 (FAA)

KUSSO EIGHT DEPARTURE (RNAV)



DEPARTURE ROUTE DESCRIPTION

TAKEOFF RUNWAY 17: Climb on heading 169° to 1700 before proceeding north.

When entering controlled airspace, fly heading assigned by ATC, expect vector to SALVE, then on track 090° to KUSSO, then on assigned transition. Maintain ATC assigned altitude, expect filed altitude 10 minutes after departure.

BDDAY TRANSITION (KUSSO8.BDDAY)

BSKAT TRANSITION (KUSSO8.BSKAT)

FORCK TRANSITION (KUSSO8.FORCK)

LOOSE TRANSITION (KUSSO8.LOOSE)

MRSSH TRANSITION (KUSSO8.MRSSH)

ZALEA TRANSITION (KUSSO8.ZALEA)

SC-2, 30 DEC 2021 to 27 JAN 2022

SC-2, 30 DEC 2021 to 27 JAN 2022