

WAAS CH 42505 W31A	APP CRS 314°	Rwy Idg TDZE Apt Elev	6500 487 501
--	------------------------	-----------------------------	---

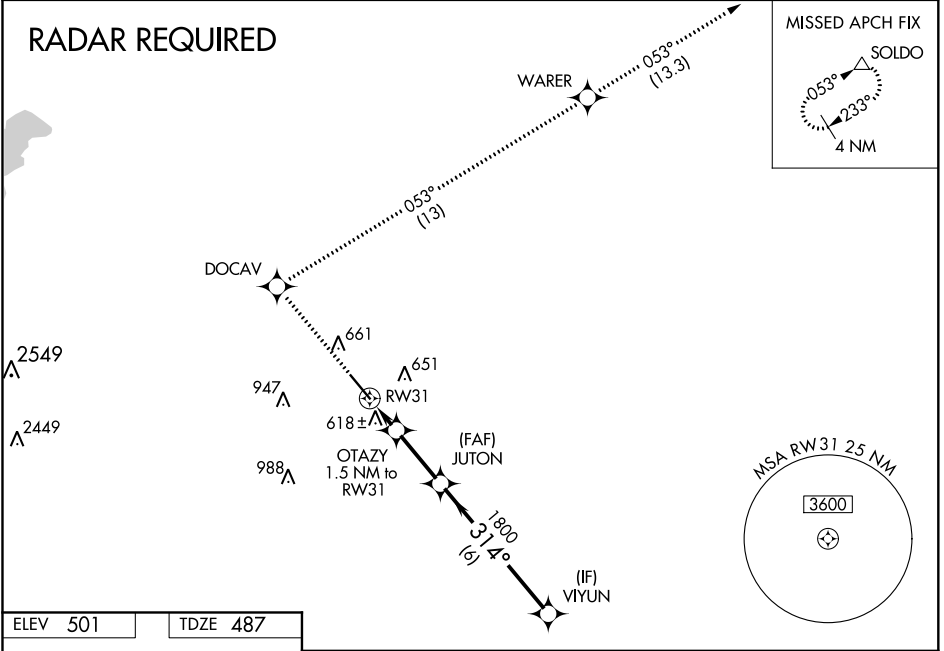
RNAV (GPS) RWY 31

LANCASTER RGNL (LNC)

⚠ For uncompensated Baro-VNAV systems, LNAV/VNAV NA below -16°C (4°F) or above 47°C (116°F). DME/DME RNP-0.3 NA. Baro-VNAV NA when using Dallas Exec altimeter setting. When local altimeter setting not received, use Dallas Exec altimeter setting and increase all DA 45 feet and all MDA 60 feet; increase LNAV/VNAV all Cats and LNAV Cat C and D visibility ¼ mile.

MISSED APPROACH: Climb to 2000 direct DOCAV and right turn on track 053° to WARER then climb to 3000 on track 053° to SOLDO and hold.

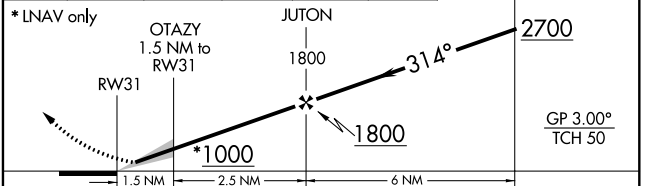
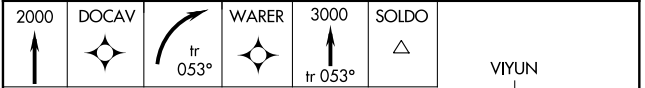
AWOS-3 118,975	REGIONAL APP CON 125.2 343.65	GCO 121,725	UNICOM 122.7 (CTAF) 📻
--------------------------	---	-----------------------	--



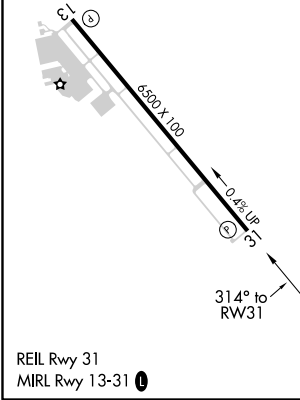
SC-2, 17 JUN 2021 to 15 JUL 2021

SC-2, 17 JUN 2021 to 15 JUL 2021

ELEV 501	TDZE 487
----------	----------



CATEGORY	A	B	C	D
LPV DA		687-¾	200 (200-¾)	
LNAV/VNAV DA		925-1½	438 (500-1½)	
LNAV MDA		880-1	393 (400-1)	880-1¼ 393 (400-1¼)
CIRCLING	980-1	479 (500-1)	980-1½ 479 (500-1½)	1060-2 559 (600-2)



LANCASTER, TEXAS
MIRL Rwy 13-31 **📻**
Amdt 1 18NOV10

32°35'N-96°43'W

LANCASTER RGNL (LNC) RNAV (GPS) RWY 31